

SERIES 1855 - MINIATURE DOUBLE-POLE ROCKER SWITCHES

TO 4 (1) A 250 V AC



PRODUCT FEATURES

- ◆ Illuminated rocker switches
- ◆ Different lamp variants
- ◆ Powerful with 50 000 mechanical switching cycles
- ◆ Caulked terminals for reliable plugging of the receptacles

ON REQUEST

- ◆ Other colors
- ◆ Other printing variants
- ◆ Other terminal types
- ◆ Other lamp variants
- ◆ Cable assembly

| | |
|--|---|
| Mechanical life endurance | 5E4 |
| Contact resistance (new condition) | < 100 mOhm (1 A 12 V DC) |
| Insulation resistance (new condition) | > 100 MOhm (500 V DC) |
| Proof tracking | 250 PTI |
| Protection type | IP 40 |
| Ambient temperature | terminal side -20 °C ... +85 °C actuating side -20 °C ... +55 °C |
| Flammability | UL 94 V-2 |
| Glow wire test temperature | 850 °C |
| Material | actuator PA housing PA terminals silver plated |
| Plug force of the terminals | ≤ 80 N |
| Approval marks | CE / RU / C |
| Suitable for appliances of protection class II | |



ROCKER SWITCHES

PUSHBUTTON SWITCHES

TOGGLE SWITCHES

SLIDE SWITCHES

ROTARY SWITCHES

FOOT SWITCHES

FACT AND KEY SWITCHES

SNAP-ACTION SWITCHES

MICRO-SIGNAL SWITCHES

SENSORS

SERIES 1855 - MINIATURE DOUBLE-POLE ROCKER SWITCHES

TO 4 (1) A 250 V AC

|  double-pole | Lighting voltage in V | Actuator color / printing | Housing color | 4 (1) A 250 V AC 1E4 | 6 A 125 V AC 1/10 HP | 4 A 250 V AC 1/10 HP | Terminal type | Terminal description | Contact distance in mm | Contact material | EN 60335 cap. 30 conform "G" | Stock version |
|--|-----------------------|---|---------------|----------------------|----------------------|----------------------|---|----------------------|------------------------|------------------|------------------------------|---------------|
| ON / OFF switch (DPST) | | | | | | | | | | | | |
| 1855.0102 | 230 |  | | ● | | ● |  | | ≈ 3 | Ag | | |
| 1855.0108 | 230 |  | | ● | | ● |  | | ≈ 3 | Ag | | ● |
| 1855.1102 | 230 |  | | ● | | ● |  | 4.8 | ≈ 3 | Ag | | ● |
| 1855.1104 | 230 |  | | ● | | ● |  | 4.8 | ≈ 3 | Ag | | ● |
| 1855.1108 | 230 |  | | ● | | ● |  | 4.8 | ≈ 3 | Ag | | ● |
| 1855.1115 | 230 |  | | ● | | ● |  | 4.8 | ≈ 3 | Ag | ● | |
| 1855.1118 | 230 |  | | ● | | ● |  | 4.8 | ≈ 3 | Ag | ● | |
| 1855.1122 | 110 |  | | | ● | |  | 4.8 | ≈ 3 | Ag | | |
| 1855.1124 | 110 |  | | | ● | |  | 4.8 | ≈ 3 | Ag | | |

Further information under

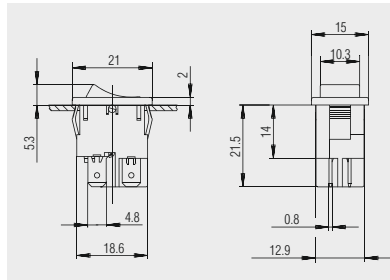
WWW.MARQUARDT-SWITCHES.COM

SERIES 1855 - MINIATURE DOUBLE-POLE ROCKER SWITCHES

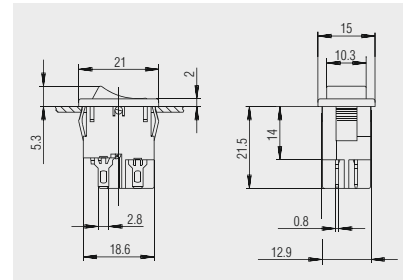
TO 4 (1) A 250 V AC



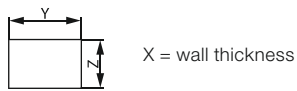
Basic type 1855



Quick-connect terminal
4.8 x 0.8



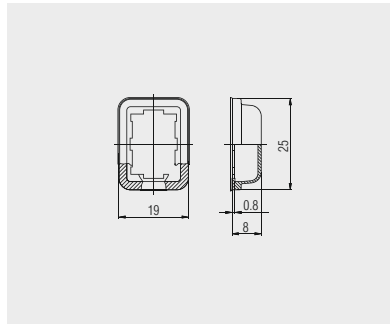
Solder terminal



| X | Y | Z |
|---------------|----------------------|----------------------|
| 0.75 ... 1.25 | 19.2 ^{-0.1} | 12.9 ^{+0.1} |
| 1.25 ... 2 | 19.4 ^{-0.1} | 12.9 ^{+0.1} |
| 2 ... 3 | 19.8 ^{-0.1} | 12.9 ^{+0.1} |



Protection cap
203.089.011



Transparent PVC - protection cap.
Serves as dust and water protection
for the actuating side.

ROCKER SWITCHES

PUSHBUTTON SWITCHES

TOGGLE SWITCHES

SLIDE SWITCHES

ROTARY SWITCHES

FOOT SWITCHES

FACT AND KEY SWITCHES

SNAP-ACTION SWITCHES

MICRO-SIGNAL SWITCHES

SENSORS