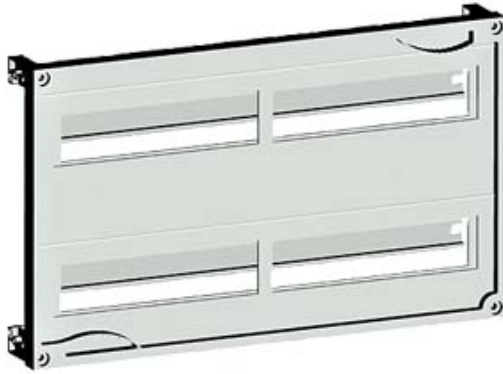


ALPHA 160 DIN, ASSEMBLY KIT F. MODULAR
INSTALLATION DEVICES, TIER SPACING 150MM,
H=300 W=500



Accessories

accessories

others

General Product Approval

Declaration of
Conformity

Test Certificates



GOST

[other](#)



EG-Konf.

[Type Test
Certificates/Test
Report](#)

[other](#)

Test Certificates

[Special Test
Certificate](#)

Further information

Information- and Downloadcenter (Catalogs, Brochures,...)

<http://www.siemens.com/lowvoltage/catalogs>

Industry Mall (Online ordering system)

<https://eb.automation.siemens.com/mall/en/WW/Catalog/Product/8GK43512KK21>

Service&Support (Manuals, Certificates, Characteristics, FAQs,...)

<http://support.automation.siemens.com/WW/view/en/8GK43512KK21/all>

Image database (product images, 2D dimension drawings, 3D models, device circuit diagrams, ...)

http://www.automation.siemens.com/bilddb/cax_en.aspx?mlfb=8GK43512KK21

CAX-Online-Generator

<http://www.siemens.com/cax>

Tender specifications

<http://ausschreibungstexte.siemens.com/tiplv>

last modified:

11.03.2015