

DCMT indexable insert, medium machining MPX HC7520
ISO M coating CVD



Application

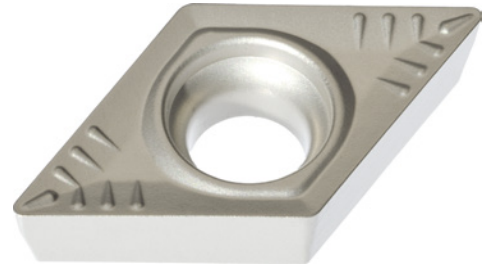
For longitudinal turning and copy turning with a wide infeed range in moderate cutting conditions

Version

- sintered cemented carbide indexable insert

Advantage

- perfect combination of toughness and resistance to wear, for high degree of process stability and broad range of applications
- Positive soft-cutting chip geometry with a wide infeed range and stable blades



Art. No.	17864 609
Machining conditions for indexable insert	Medium
Shape of indexable insert ISO	D
Clearance angle of indexable insert ISO	C
Tolerance class of indexable insert ISO	M
Indexable insert type ISO	T
Size of indexable insert ISO	11
Thickness of indexable insert ISO	T3
Corner radius of indexable insert ISO	04
Coating	CVD
Carbide type area ISO	M
Carbide type ISO	M20
Carbide type	HC7520
ISO-Code Rotating	DCMT 11T304
Material to be processed	Stainless steel, Special alloy
min./max. ap	0.4-2 mm
f min./max.	0.16-0.25 mm/r
Materials group	M (primary application), S (secondary application)
f min.	0.16 mm/r
max. f	0.25 mm/r
max. ap	2 mm
min. ap	0.4 mm
Supply type	Medium processing - Universal geometry with wide service range
Chip breaker code	MPX
Number of pieces per packet	10 PCS

EAN-Code

4050293080810