

Datasheet

Item no. 704722/ 704736/ 704753/ 704766/ 704781/ 704796

V1_0717_01_en

Pushbutton Switches

Product Overview

Specs

Having three head shape: round ($\Phi 18\text{mm}$), square ($18 \times 18\text{mm}$) and rectangular ($18 \times 24\text{mm}$), containing pilot lamps, pushbuttons, illuminated push buttons, selector switches key-lock switches and emergency switches. The normal diameter of the installation hole is $\Phi 16\text{mm}$, and some type can be installed in $\Phi 22\text{mm}$ hole easily with the diameter changing circle.

Performance

The product has stable property, small contact resistance, strong insulation resistance, anti-vibration and soon. It meets to standards of IEC60947-5-1, GB14048.5 etc.

Structure

The switch have the advantage of fast-break and self-cleaning, and each of them contains 1NO and 1NC terminal. Every pushbutton also can possess from one to four switch units.

Protective Degree

The standard degree is IP40, some of type can reach IP67 with the seal cover. And the pin insert type can be make in IP65.

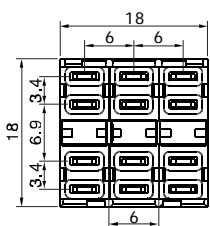
Lamp Ratings

Lamp Type	AC LED Lamp (Standard)			Neon lamp		
	AC/DC6V	AC/DC12V	AC/DC24V	AC110V	AC220V	
Rated Voltage	AC/DC110V		AC/DC220V			
Cover Color:	R	G	Y	O	B	W
Life	About 40,000 hours			About 20,000 hours		

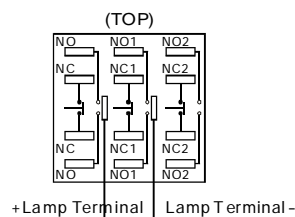
Note: the lamp contains a current-limiting resistor inside and doesn't need external connection.

DC LED lamp, dual-color LED lamp and other voltages can be customized.

Bottom View



Terminal Arrangement



Switch Ratings

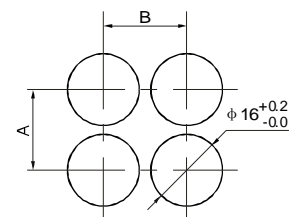
Thermal Current I _{th}	5A		
Rated Voltage	24V	125V(110V)	250V(220V)
Direct Current	1A	0.2A	0.1A
Alternating Current	P.F=1	5A	3A
	P.F=0.7	3A	2A

Specifications

Operating Temperature	-25°C ~ +55°C (no freezing)	
Operating Humidity	45 ~ 85% RH (no condensation)	
Contact Material	- silver - silver alloy - gold-clad silver, cladding thickness is 3 μm	
Contact Resistance	≤ 50MΩ	
Insulation Resistance	≥ 100MΩ	
Dielectric strength	Between contact and lamp terminals:	2000V, AC 50Hz, 1 min
	Between terminal of the same pole:	1000V, AC 50Hz, 1 min
	Between terminal of different pole:	2000V, AC 50Hz, 1 min
Vibration Resistance	50Hz, Amplitude 1.2mm p-p	
Shock Resistance	≥ 10g	
Life	Momentary Type	1,000,000 times
	Alternate and Selector Type	500,000 times
	Key-lock and Emergency Type	200,000 times
	Electrical	≥ 50,000 times
Terminal	Diameter of welded wire: 2 × 0.8mm Area of copper wire: 0.75mm ² max Connecting link: 2.8 × 0.5mm	
Solder Heat Resistance	230°C (no more than 3 second)	
Operating Travel	(Pushbuttons) about 3mm	

Installation Dimensions

Category	A	B
Round	≥ 18mm	≥ 18mm
Square	≥ 18mm	≥ 18mm
Rectangular	≥ 18mm	≥ 24mm
Mushroom	≥ 32mm	≥ 32mm






Datasheet

Item no. 704722/ 704736/ 704753/ 704766/ 704781/ 704796

V1_0717_01_en

Emergency Pushbuttons

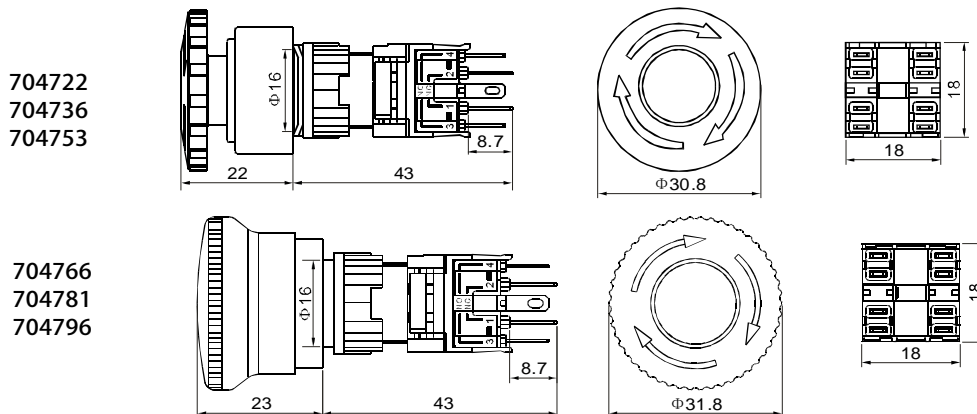
Product Cutline

Shape	Contact	Item no.	Remarks
 <p>can be illuminated</p>	Monopole	704722	
	Dipole	704736	
	Three-pole	704753	
	Monopole	704766	
	Dipole	704781	
	Three-pole	704796	

- 704722 : Monopole, Emergency button stop switch, 250V, AC 3A Φ 16mm,plastic crust
- 704736 : Dipole, Emergency button stop switch, 250V, AC 3A Φ 16mm,plastic crust
- 704753 : Three-pole, Emergency button stop switch, 250V, AC 3A Φ 16mm,plastic crust
- 704766 : Monopole, Emergency button stop switch, 250V, AC 3A Φ 16mm,plastic crust
- 704781 : Dipole, Emergency button stop switch, 250V, AC 3A Φ 16mm,plastic crust
- 704796 : Three-pole, Emergency button stop switch, 250V, AC 3A Φ 16mm,plastic crust

Shape and Dimensions

Panel Thickness 0.5~5mm



This is a publication by Conrad Electronic SE, Klaus-Conrad-Str. 1, D-92240 Hirschau (www.conrad.com).

All rights including translation reserved. Reproduction by any method, e.g. photocopy, microfilming, or the capture in electronic data processing systems require the prior written approval by the editor. Reprinting, also in part, is prohibited. This publication represents the technical status at the time of printing.

© Copyright 2017 by Conrad Electronic SE.