

Crimp Fittings

Press-armaturen

Embouts sertis

Raccordi a graffare

Racores para presión

FLB (3000 psi)

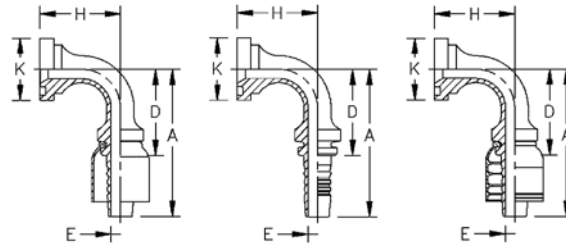
Split Flange Code 61, 90° Elbow

Flansch-Code 61, 90° Krümmer

Bride code 61, coudé 90°

Flangia codice 61 a 90°

Brida-córdigo 61 acodado a 90°



Part Number	Part Number	Part Number	Thread T	Flange	Tube O.D.	ND	Hose Size	A	D	H	E Ø	HEX [1]	HEX [2]	K Ø
OTC Fitting	Skive Nipple	TTC Fitting						mm	mm	mm	mm			mm
1G8FLB8	1S8FLB8	1A8FLB8		1/2"			-8	72,6	42,9	41,4	9,6			30,2
1G12FLB12	1S12FLB12	1A12FLB12		3/4"			-12	88,7	58,5	54,2	15,5			38,1
1G16FLB12	1S16FLB12	1A16FLB12		1"			-12	102,4	72,2	60,4	15,5			44,4
1G12FLB16	1S12FLB16	1A12FLB16		3/4"			-16	106,7	72,3	55,1	20,7			38,1
1G16FLB16	1S16FLB16	1A16FLB16		1"			-16	107,0	72,7	60,4	20,7			44,4
1G20FLB16	1S20FLB16	1A20FLB16		1 1/4"			-16	123,3	88,9	66,6	20,7			50,8
1G16FLB20	1S16FLB20	1AP16FLB20*		1"			-20	118,4	74,4	60,4	26,6			44,4
		1AT16FLB20**		1 1/4"			-20	118,4	74,4	60,4	26,6			44,4
1G20FLB20	1S20FLB20	1AP20FLB20*		1 1/4"			-20	134,6	90,6	66,6	26,6			50,8
		1AT20FLB20**		1 1/4"			-20	134,6	90,6	66,6	26,6			50,8
1G24FLB20	1S24FLB20	1AP24FLB20*		1 1/2"			-20	153,4	109,4	79,3	26,6			60,3
		1AT24FLB20**		1 1/2"			-20	153,4	109,4	79,3	26,6			60,3
1G20FLB24	1S20FLB24	1A20FLB24		1 1/4"			-24	137,0	90,7	66,6	32,0			50,8
1G24FLB24	1S24FLB24	1A24FLB24		1 1/2"			-24	156,9	110,6	79,3	32,0			60,3
1G32FLB24	1S32FLB24	1A32FLB24		2"			-24	184,8	138,5	114,3	32,0			71,4
1G32FLB32	1S32FLB32	1A32FLB32		2"			-32	189,7	137,5	114,3	44,4			71,4

SAE Captive Flange (3000 psi)

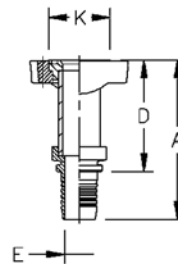
Captive Flange

SAE Ganzflansch

Brides SAE

Controflange SAE

Bridas Completas SAE



Part Number	Part Number	Part Number	Thread T	Flange	Tube O.D.	ND	Hose Size	A	D	H	E Ø	HEX [1]	HEX [2]	K Ø
OTC Fitting	Skive Nipple	TTC Fitting						mm	mm	mm	mm			mm
	1F00186-2020-S			1 1/4"			-20	107,8	63,8		26,6			50,8
	1F00186-3232-S			2"			-32	117,0	66,8		44,4			71,4

* 1-wire

** 2-wire

* 1-wire

** 2-wire

* 1-wire

** 2-wire

* 1-wire

** 2-wire

* 1-wire

** 2-wire

Specification subject to change without notice