



# OM-CP-IFC200 / OM-CP-IFC202

## Data Logger Interface

INSTRUCTION  
SHEET

M-5614/1116

Shop online at [omega.com](http://omega.com)<sup>SM</sup> e-mail: [info@omega.com](mailto:info@omega.com)  
For latest product manuals: [www.omegamanual.info](http://www.omegamanual.info)

---



## 1. Setup USB Data Logger Interface

- A** Insert the Omega Data Logger Software USB Flash Drive into an available USB port on your PC. Click the Start menu and choose Computer or My Computer. Browse to the Removable Disk drive corresponding to the USB port you selected.

For Windows 7 users, a dialogue box may appear with a list of options. Select "Open Folder to view files." If you are not prompted, Click the Start menu and choose Computer or My Computer. Browse to the Removable Disk drive corresponding to the USB port you selected.

- B** Click on the Omega Software link on the Contents screen to start the install of the Data Logger Software. The Install Omega Software window will appear, click on the Install Omega Software link. Follow the on screen prompts to complete the installation. Click Back to Omega Contents when completed. See the Software Manual for additional information.



## 2. Connect the USB Data Logger Interface

- A** Connect the USB end of the OM-CP-IFC200/202 to the 6" USB extender cable (optional but recommended). Plug the opposite end of the cable into a USB port on the PC.
- B** Once the OM-CP-IFC200/202 is plugged in, a New Hardware Found message will appear on the PC. The new drivers will automatically configure for use with the Interface Cable. A message will then appear that the new hardware is installed and ready to use.



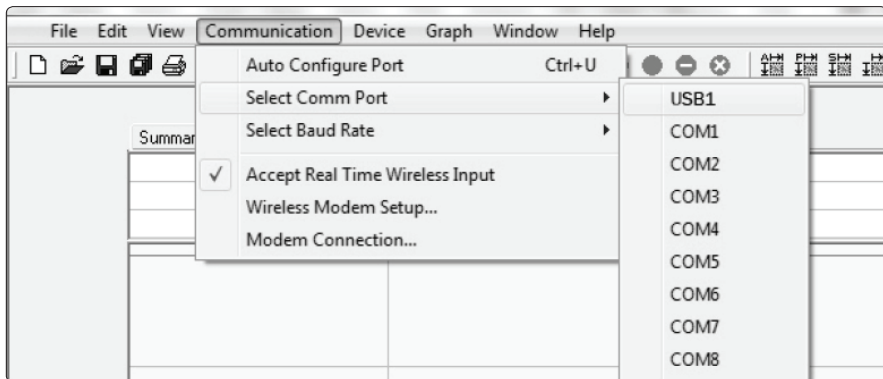
The installation of the USB data logger interface is complete.

Plug the stereo cable into the open jack on the OM-CP-IFC200/202 , the opposite end of the cable will be plugged into the data logger.

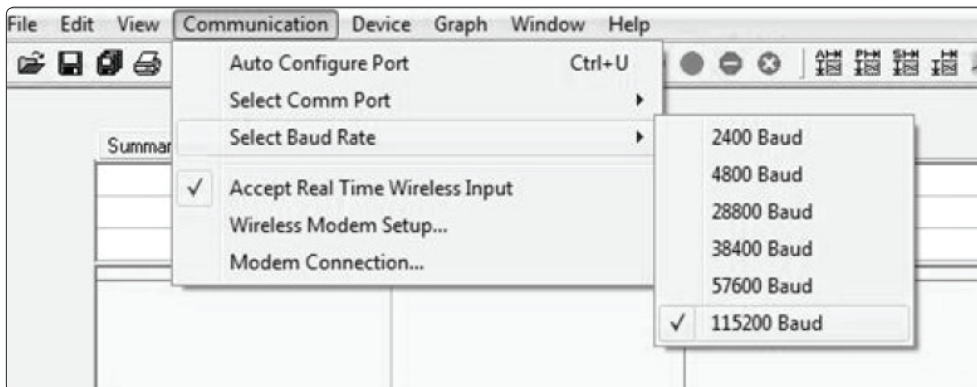
## 3. Test the Data Logger Interface Operation

- A** To verify that the USB Interface drivers are installed properly, check to ensure the Data Logger Software can recognize a device.
- B** When the interface cable is connected to the PC the blue LED power indicator light should be on. If the indicator light is not on, unplug the interface cable, wait 5 seconds and plug it back into the PC.
- C** Start the Omega Data Logger Software. (If necessary, see the software manual for additional information on the software)
- D** Choose Select Comm Port from the Communication menu. A sub-menu will appear listing the available communication ports. If the USB driver install was successful, and the USB interface is plugged into the PC, then USB1 should appear as an option.

If multiple USB interface cables are connected to the computer they will be listed USB1, USB2, USB3, etc. Use this menu to select the proper device.



- E** The USB interface can be configured to work with most Omega Data loggers by selecting the proper baud rate from the Select Baud Rate option under the Communications menu. The baud rate used by the logger is listed on its label. For example the OM-CP-Temp101A communicates at 115,200 baud, so 115,200 must be selected.





omega.com info@omega.com

### Servicing North America:

#### U.S.A. Headquarters:

Omega Engineering, Inc.  
Toll-Free: 1-800-826-6342 (USA & Canada only)  
Customer Service: 1-800-622-2378 (USA & Canada only)  
Engineering Service: 1-800-872-9436 (USA & Canada only)  
Tel: (203) 359-1660 Fax: (203) 359-7700  
e-mail: info@omega.com

### For Other Locations Visit [omega.com/worldwide](http://omega.com/worldwide)

The information contained in this document is believed to be correct, but OMEGA accepts no liability for any errors it contains, and reserves the right to alter specifications without notice.

### WARRANTY/DISCLAIMER

OMEGA ENGINEERING, INC. warrants this unit to be free of defects in materials and workmanship for a period of **13 months** from date of purchase. OMEGA's WARRANTY adds an additional one (1) month grace period to the normal **one (1) year product warranty** to cover handling and shipping time. This ensures that OMEGA's customers receive maximum coverage on each product. If the unit malfunctions, it must be returned to the factory for evaluation. OMEGA's Customer Service Department will issue an Authorized Return (AR) number immediately upon phone or written request. Upon examination by OMEGA, if the unit is found to be defective, it will be repaired or replaced at no charge. OMEGA's WARRANTY does not apply to defects resulting from any action of the purchaser, including but not limited to mishandling, improper interfacing, operation outside of design limits, improper repair, or unauthorized modification. This WARRANTY is VOID if the unit shows evidence of having been tampered with or shows evidence of having been damaged as a result of excessive corrosion; or current, heat, moisture or vibration; improper specification; misapplication; misuse or other operating conditions outside of OMEGA's control. Components in which wear is not warranted, include but are not limited to contact points, fuses, and triacs.

**OMEGA is pleased to offer suggestions on the use of its various products. However, OMEGA neither assumes responsibility for any omissions or errors nor assumes liability for any damages that result from the use of its products in accordance with information provided by OMEGA, either verbal or written. OMEGA warrants only that the parts manufactured by the company will be as specified and free of defects. OMEGA MAKES NO OTHER WARRANTIES OR REPRESENTATIONS OF ANY KIND WHATSOEVER, EXPRESSED OR IMPLIED, EXCEPT THAT OF TITLE, AND ALL IMPLIED WARRANTIES INCLUDING ANY WARRANTY OF MERCHANTABILITY AND FITNESS FOR A PARTICULAR PURPOSE ARE HEREBY DISCLAIMED. LIMITATION OF LIABILITY: The remedies of purchaser set forth herein are exclusive, and the total liability of OMEGA with respect to this order, whether based on contract, warranty, negligence, indemnification, strict liability or otherwise, shall not exceed the purchase price of the component upon which liability is based. In no event shall OMEGA be liable for consequential, incidental or special damages.**

CONDITIONS: Equipment sold by OMEGA is not intended to be used, nor shall it be used: (1) as a "Basic Component" under 10 CFR 21 (NRC), used in or with any nuclear installation or activity; or (2) in medical applications or used on humans. Should any Product(s) be used in or with any nuclear installation or activity, medical application, used on humans, or misused in any way, OMEGA assumes no responsibility as set forth in our basic WARRANTY/DISCLAIMER language, and, additionally, purchaser will indemnify OMEGA and hold OMEGA harmless from any liability or damage whatsoever arising out of the use of the Product(s) in such a manner.

### RETURN REQUESTS / INQUIRIES

Direct all warranty and repair requests/inquiries to the OMEGA Customer Service Department. BEFORE RETURNING ANY PRODUCT(S) TO OMEGA, PURCHASER MUST OBTAIN AN AUTHORIZED RETURN (AR) NUMBER FROM OMEGA'S CUSTOMER SERVICE DEPARTMENT (IN ORDER TO AVOID PROCESSING DELAYS). The assigned AR number should then be marked on the outside of the return package and on any correspondence.

The purchaser is responsible for shipping charges, freight, insurance and proper packaging to prevent breakage in transit.

FOR **WARRANTY** RETURNS, please have the following information available BEFORE contacting OMEGA:

1. Purchase Order number under which the product was PURCHASED,
2. Model and serial number of the product under warranty, and
3. Repair instructions and/or specific problems relative to the product.

FOR **NON-WARRANTY** REPAIRS, consult OMEGA for current repair charges. Have the following information available BEFORE contacting OMEGA:

1. Purchase Order number to cover the COST of the repair,
2. Model and serial number of the product, and
3. Repair instructions and/or specific problems relative to the product.

OMEGA's policy is to make running changes, not model changes, whenever an improvement is possible. This affords our customers the latest in technology and engineering. OMEGA is a registered trademark of OMEGA ENGINEERING, INC.

© Copyright 2016 OMEGA ENGINEERING, INC. All rights reserved. This document may not be copied, photocopied, reproduced, translated, or reduced to any electronic medium or machine-readable form, in whole or in part, without the prior written consent of OMEGA ENGINEERING, INC.