

16

1614 17

Power supply connectors

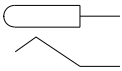
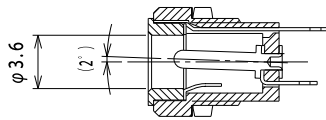
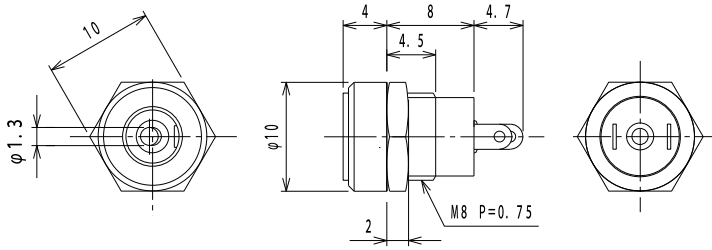


Power supply chassis socket, straight version, with solder eyes, for front side mounting

State: Active

16

1614 17



Environmental conditions

Temperature range -20 °C/+70 °C

Materials

Insulating body PA, V-2 according to UL94
Contact CuZn, nickel-plated
Hexagonal nut steel, nickel-plated

Mechanical data

Diameter opening 3,6 mm
Diameter center pin 1,3 mm
Mating cycles ≥ 5000
Insertion force ≤ 30 N
Withdrawal force 3–30 N

Electrical data (at T_{amb} 20 °C)

Contact resistance ≤ 30 m Ω
Rated current 0,5 A
Rated voltage 12 V DC
Rated impulse voltage 500 V/60 s
Insulation resistance ≥ 100 M Ω

Associated products

Counterparts
☞ 1631 01 ☞ NES/J 135

16

1614 17

Designation	Pole Number	PU (Pieces)	MDQ (Pieces)
1614 17	2	250	500

Packaging:

in bulk, in a cardboard box or a plastic bag