

Jack Connectors

Order code	Manufacturer code	Description
20-1430	n/a	2 POLE SWITCHED JACK SOCKET (RC)
20-1432	n/a	3 POLE SWITCHED JACK SOCKET (RC)

Jack Connectors	Page 1 of 2
The enclosed information is believed to be correct, Information may change 'without notice' due to product improvement. Users should ensure that the product is suitable for their use. E. & O. E.	Revision A 04/07/2003

Switchcraft® Hi-D Jax 2- and 3- Conductor – ¼” Enclosed Phone Jacks - Series 11*

Hi-D Jax® 2- and 3-conductor enclosed phone jacks are ideal for panel/chassis and PCB mounting. Unitised moulded housing protects springs, provides mechanical and electrical reliability, minimises leakage and provides low capacity between springs. Mounts on .625 inch minimum centres in rows or arrays.

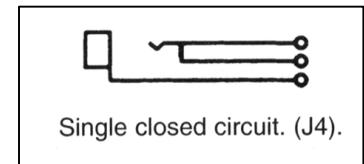
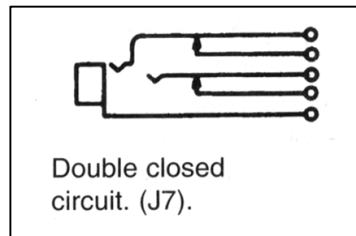
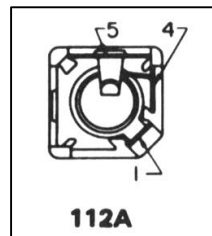
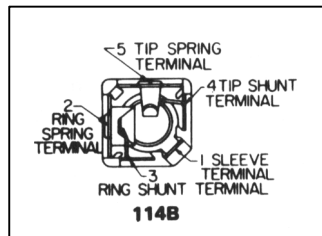
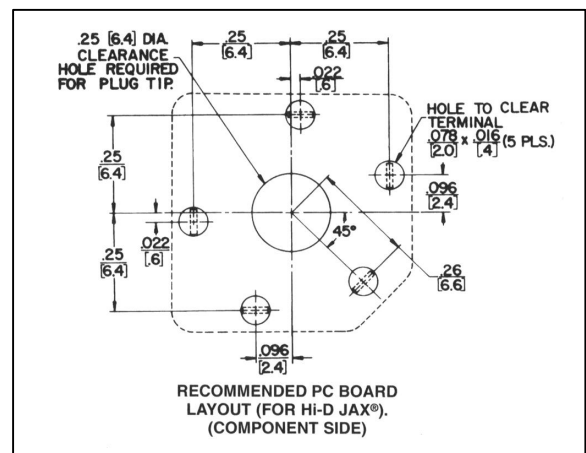
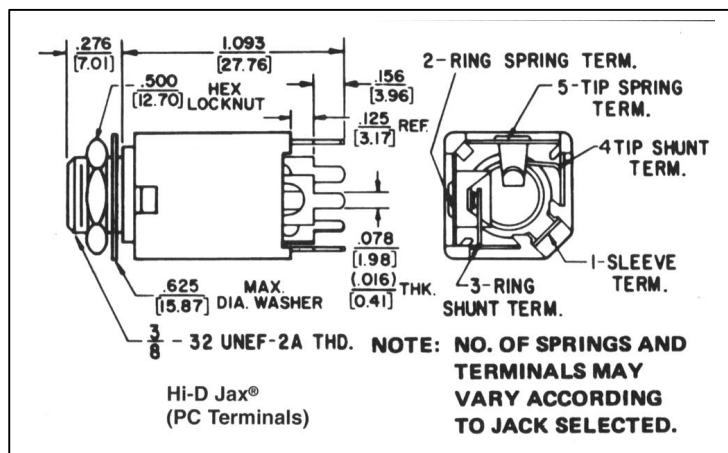
Mounting

Jacks mount in a single .375 inch diameter hole on .625 inch minimum centres. Series 11* mount in panels up to .156 inch thick. Formed “shoulders” on each terminal provide stable stand-off mount. Threaded bushing permits mechanical connection to equipment panel. Mounting hardware is supplied.

SERIES 11* -2 and -3-conductor types, threaded metal bushing .276 inch long. .25 inch inside diameter bushings

Material

Mounting Bushing : Nickel-plated copper alloy



Dimensions are for reference only: Inch (mm)

Switchcraft Ref.	Description
112APC	2-pole ¼” Professional Jack Sockets
114BPC	3-pole ¼” Professional Jack Sockets