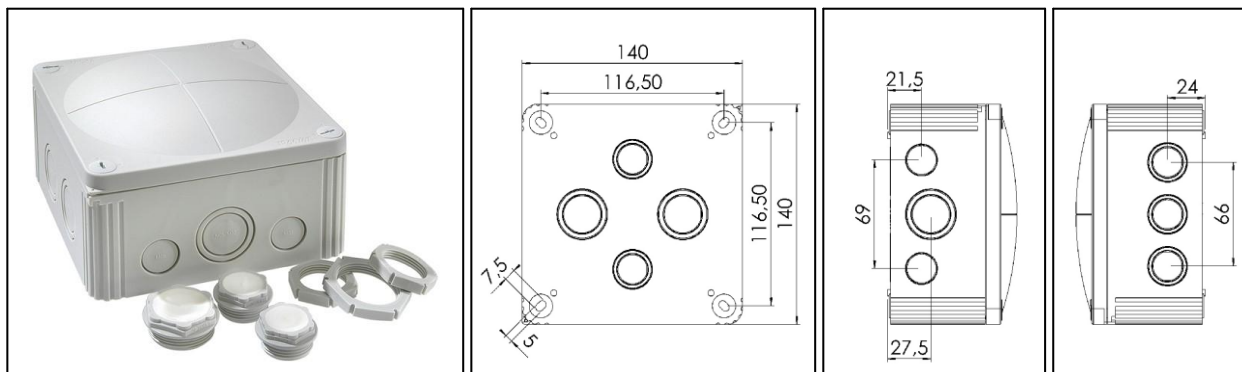


WISKA COMBI 1010



Protection class to EN 60 529:

Flame protection:

Temperatures during installation:

Temperature range of material:

Voltage:

Material:

Terminals/poles:

Fixing:

Equipment:

IP 66 / 67

Glow wire test 750° C acc. to EN 60695-2-11

-5°C to 60°C

-30°C to 100°C, intermittent up to approx. 120°C

690 V

Polypropylene, reinforced; sealing: thermoplastic elastomere

10 mm²

4 internal openings outside of the sealing area

- 10 knockout entries at the side (5xM 25/32, 2xM 20, 3xM 20/25)

- 4 knockout entries (2xM 25/32, 2xM2 0/25) in the base

- 4 captive quick-release lid screws

- Colour RAL 7035 light grey



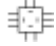





- .../S = black

- .../W = white

- Incl. self-sealing membrane screws QUIXX-EMS, 2 x M 25, 1 x M 32

Accessories:

DIN RAIL KIT 1010: Rail TS 35 + Fixing material, WISKA-No. 10060363

Type	WISKA-No.			L x B x H external / open mm
COMBI 1010/leer	10060702	2		140 x 140 x 82
COMBI 1010/leer/S	10062214	2		140 x 140 x 82
COMBI 1010/leer/W	10062210	2		140 x 140 x 82
COMBI 1010/5	10060703	2		140 x 140 x 82
COMBI 1010/5/S	10062215	2		140 x 140 x 82
COMBI 1010/5/W	10062211	2		140 x 140 x 82
DIN RAIL KIT 1010	10060363	1	—	-

© 2013 WISKA Hoppmann & Mulsow GmbH

Kisdorfer Weg 28

D-24568 Kaltenkirchen

Phone: +49 (0)4191 / 508-100

Fax: +49 (0)4191 / 508-209