



Relays, Contactors & Switches > Switches > Tactile Switches



Actuator Style: **Round**

Operating Function: **Off (On)**

Contact Base Material: **Phosphor Bronze**

Switch Contact Plating Material: **Silver**

Dust Proof: **No**

Features

Product Type Features

Product Type	Switch
Illuminated	No
Actuator Style	Round
Dust Proof	No

Configuration Features

ESD Grounding Terminal	Without
Operating Function	Off (On)
Support Bracket	Without
Configuration (Pole-Throw)	Single Pole - Single Throw
Number of Actuators	1

Electrical Characteristics

Voltage Rating	24
----------------	----

Body Features

Actuator Material	Nylon
Actuator Color	White

Contact Features

Contact Base Material	Phosphor Bronze
Switch Contact Plating Material	Silver
Contact Current Rating	50 mA

Mechanical Attachment

Mounting Type	Surface Mount
Mounting Angle	Vertical

Housing Features

Process Sealed	No
----------------	----

Usage Conditions

Temperature Rating	-40 – 105 °C
--------------------	--------------

Packaging Features

Packaging Method	Tape & Reel
------------------	-------------

Product Compliance

[For compliance documentation, visit the product page on TE.com>](#)

EU RoHS Directive 2011/65/EU	Compliant
EU ELV Directive 2000/53/EC	Compliant
China RoHS 2 Directive MIIT Order No 32, 2016	No Restricted Materials Above Threshold
EU REACH Regulation (EC) No. 1907/2006	Current ECHA Candidate List: JUL 2019 (201) Candidate List Declared Against: JUL 2019 (201) Does not contain REACH SVHC
EU REACH Regulation (EC) No. 1907/2006	Current ECHA Candidate List: JUL 2019 (201) Candidate List Declared Against: JUL 2019 (201)
Halogen Content	Low Halogen - Br, Cl, F, I < 900 ppm per homogenous material. Also BFR/CFR/PVC Free
Solder Process Capability	Reflow solder capable to 260°C

Product Compliance Disclaimer

This information is provided based on reasonable inquiry of our suppliers and represents our current actual knowledge based on the information they provided. This information is subject to change. The part numbers that TE has identified as EU RoHS compliant have a maximum concentration of 0.1% by weight in homogenous materials for lead, hexavalent chromium, mercury, PBB, PBDE, DBP, BBP, DEHP, DIBP, and 0.01% for cadmium, or qualify for an exemption to these limits as defined in the Annexes of Directive 2011/65/EU (RoHS2). Finished electrical and electronic equipment products will be CE marked as required by Directive 2011/65/EU. Components may not be CE marked. Additionally, the part numbers that TE has identified as EU ELV compliant have a maximum concentration of 0.1% by weight in homogenous materials for lead, hexavalent chromium, and mercury, and 0.01% for cadmium, or qualify for an exemption to these limits as defined in the Annexes of Directive 2000/53/EC (ELV). Regarding the REACH Regulations, TE's information on SVHC in articles for this part number is still based on the European Chemical Agency (ECHA) 'Guidance on requirements for substances in articles' (Version: 2, April 2011), applying the 0.1% weight on weight concentration threshold at the finished product level. TE is aware of the European Court of Justice ruling of September 10th, 2015 also known as O5A (Once An

Article Always An Article) stating that, in case of 'complex object', the threshold for a SVHC must be applied to both the product as a whole and simultaneously to each of the articles forming part of its composition. TE has evaluated this ruling based on the new ECHA "Guidance on requirements for substances in articles" (June 2017, version 4.0) and will be updating its statements accordingly.

Compatible Parts



TE Model / Part # 1825910-6
FSM4JH=6MM TACT SWITCH, HIGH TEMP



TE Model / Part # 2-1825910-7
FSM14JH=6MM TACT SWITCH, HIGH TEMP




TE Model / Part # 4-1437565-2
FSM4JSMATR=TACT SWITCH 6X6MIL



TE Model / Part # 3-1437565-0
FSM2JSMATR=ON T/R

Also in the Series | Alcoswitch FSMJSMA



Tactile Switches(14)

Customers Also Bought




TE Model / Part #3-794682-4
04P MICRO MNL ASSY, VRT,THRU,LF



TE Model / Part #1-1734264-1
M/J,RJ45,Side entry,8P8C, R/A,1




TE Model / Part #1-2176337-3
CRGCQ 0402 100R 1%



TE Model / Part #2-825440-5
MOD 2 PINHDR 2X25P.



TE Model / Part #2-647123-6
06P MTA156 SHRD HDR ASSY SQ SN



TE Model / Part #1717831-2
MINI PCI EXPRESS EMBOSS TAPE CONN



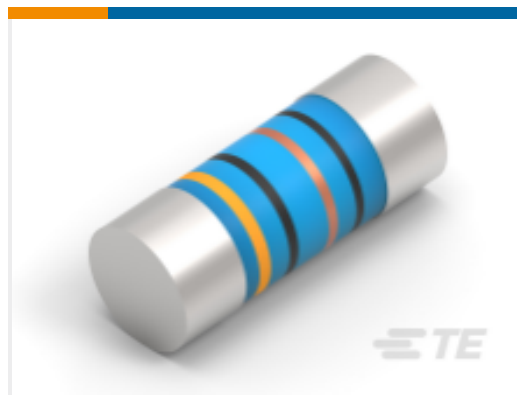
TE Model / Part #1977066-1
FSMMSHP=R/A TACT SWITCH, SMT W/LOC. PEGS



TE Model / Part #5-1879214-0
CPF 0402 1K13 0.1% 25PPM 1K RL



TE Model / Part #2118016-1
PCB ANTENNAS, WLAN
DUAL BAND



TE Model / Part #5-
2176316-8
MELF SMA_A 4K7 1%
50PPM 0207 1W

Documents

Product Drawings

[FSM14JSMAATR=TACT,SMT,T&R](#)

English

CAD Files

[3D PDF](#)

3D

Customer View Model

[ENG_CVM_CVM_1571563-6_V.2d_dxf.zip](#)

English

Customer View Model

[ENG_CVM_CVM_1571563-6_V.3d_igs.zip](#)

English

Customer View Model

[ENG_CVM_CVM_1571563-6_V.3d_stp.zip](#)

English