

## Thread-turning inserts, full profile 60° HC5630

For female thread cutting, right

**ATORN**<sup>®</sup>

### Application

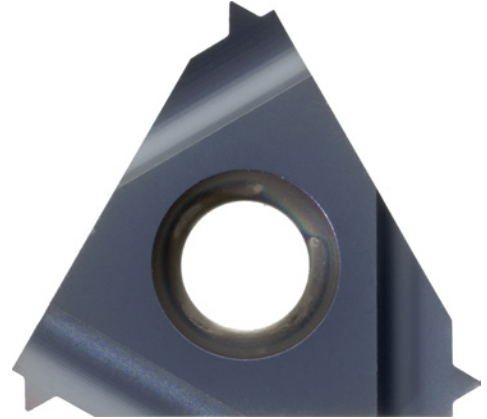
For cutting male threads on CNC machines in the material groups steel, stainless steel, and cast materials at medium to high cutting speeds.

### Version

- Ground thread-turning insert with TiALN coating

### Advantage

- Ground thread-turning insert provides good surface quality and cutting precision and thread with exact profile rendering
- High cutting speeds and service life due to innovative TiALN coating technology
- High productivity and no deburring of thread required



<b>Art. no.</b>	<b>17743 127</b>
<b>ISO name</b>	16 (IR/IL) 0.75 ISO
<b>Pitch</b>	0.75 mm
<b>Machining direction</b>	Right
<b>Carbide type</b>	HC5630
<b>Material to be processed</b>	Steel, Stainless steel, Cast metal
<b>Min./max. Vc in steel</b>	90-120 m/min
<b>Min./max. Vc in stainless steel</b>	80-100 m/min
<b>Min./max. Vc in cast iron</b>	100-110 m/min

### EAN-Code

4050293220766