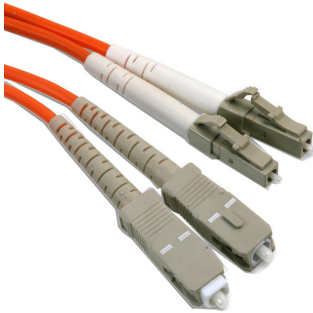


Fibre Optic Patch Lead

pro-SIGNAL

RoHS
Compliant



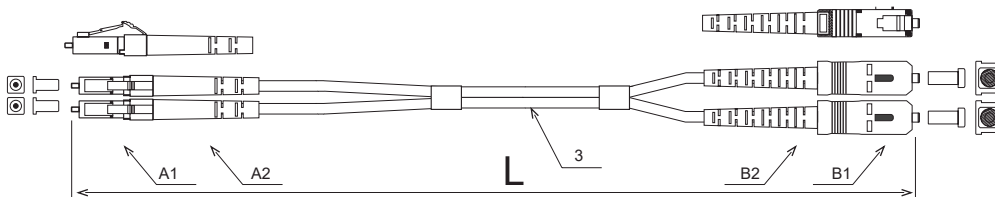
Description

High quality fibre optic patch lead. Ideal for CATV and datacomms applications.

Specifications

Fibre Optic Connector A : LC
 Fibre Optic Connector B : SC
 Fibre Type : Multimode
 Fibre Diameter : 125µm

Diagram



A1-PLUG	Beige
A2-BOOT	White
3-CABLE	Beige
B1-PLUG	Beige
B2-BOOT	OM1 Orange
Insertion Loss	≤0.3dB
Cable diameter	3mm
Cable type	PVC
Ferrule Interface type	PC
Mode	MM:50/125

Part Number Table

Description	Cable Length	Part Number
Lead Fibre Optic LC to SC	1m	PS11106
	2m	PS11107
	3m	PS11108
	5m	PS11109

Important Notice : This data sheet and its contents (the "Information") belong to the members of the AVNET group of companies (the "Group") or are licensed to it. No licence is granted for the use of it other than for information purposes in connection with the products to which it relates. No licence of any intellectual property rights is granted. The Information is subject to change without notice and replaces all data sheets previously supplied. The Information supplied is believed to be accurate but the Group assumes no responsibility for its accuracy or completeness, any error in or omission from it or for any use made of it. Users of this data sheet should check for themselves the Information and the suitability of the products for their purpose and not make any assumptions based on information included or omitted. Liability for loss or damage resulting from any reliance on the Information or use of it (including liability resulting from negligence or where the Group was aware of the possibility of such loss or damage arising) is excluded. This will not operate to limit or restrict the Group's liability for death or personal injury resulting from its negligence. pro-SIGNAL is the registered trademark of Premier Farnell Limited 2019.

Newark.com/exclusive-brands
 Farnell.com/exclusive-brands
 Element14.com/exclusive-brands

pro-SIGNAL