



Features & Benefits

- Cat 6A performance
- Suitable for 10-Gigabit Ethernet
- Ultra-slimline design
- Euro style module
- Interchangeable with other Euro Modules and blanks
- Individually QA tested
- Easy to use shield connection

Specification

Width	25mm
Depth	22mm
Height	50mm
Recommended Back-box Depth	32mm
Material	Polycarbonate/ABS thermoplastic resin with grade UL94 VO at 1.5 mm flame retardancy
Finish	High gloss
IDC Labels	Colour coded to T568B
Cable Guide	Integrated earth connection / cable tie position
Sockets	High performance shielded RJ45
IDC Blocks	Industry standard IDC blocks
Conforms to	ANSI/TIA-568-C.2 Category 6A Specification

Ordering Information

Product Description	Part Number
CCS Cat 6A FTP Compact Euro Module	008-000-002-20

Connectix Category 6A FTP Compact Modules have been designed to provide the exceptional performance required to support extremely high speed applications such as 10-Gigabit Ethernet.

Category 6A compact modules can be fitted into single or dual gang Euro faceplates and can be combined with quarter blanks and/or voice modules to provide the required configuration.

The compact design provides one of the shallowest wall outlets on the market; making them the ideal solution wherever back-box depth is a problem.

Connectix Category 6A FTP Modules are fully compliant with the ANSI/TIA Category 6A standards and provide an outstanding transmission medium free from the problems of alien crosstalk. When used in conjunction with Connectix

Category 6A FTP Patch Panels and FTP Cable the user will achieve a link performance far exceeding the Category 6A requirements.





Features & Benefits

- Cat 6A performance
- Suitable for 10-Gigabit Ethernet
- Ultra-slimline design
- LJ6C style module
- Interchangeable with other LJ6C modules and blanks
- Individually QA tested
- Easy to use shield connection

Specification

Width	25mm
Depth	22mm
Height	38.5mm
Recommended Back-box Depth	32mm
Mounting Hole Size	22mm x 37mm
Panel Thickness	2.0mm max
Material	Polycarbonate/ABS thermoplastic resin with grade UL94 VO at 1.5mm flame retardancy
Finish	High gloss
IDC Labels	Colour coded to T568B
Cable Guide	Integrated cable tie position
Sockets	High performance shielded RJ45
IDC Blocks	Industry standard IDC blocks
Conforms to	ANSI/TIA-568-C.2 Category 6A Specification

Ordering Information

Product Description	Part Number
CCS Cat 6A FTP Compact LJ6C Module	008-000-002-30
LJ6C Single One Gang Faceplate	008-009-001-00
LJ6C Dual One Gang Faceplate	008-009-002-00
LJ6C Quad Two Gang Faceplate	008-009-004-00
Quad Panel for Ackerman Floorbox	008-011-001-06
LJ6C Blank	008-001-004-07

Connectix Category 6A FTP Modules have been designed to provide the exceptional performance required to support extremely high speed applications such as 10-Gigabit Ethernet.

Connectix LJ6C Modules are ideal for use in floorboxes, or any application that has an industry standard LJ6C aperture. Single and dual gang faceplates are available for up to four LJ6C modules in addition to panels suitable for Ackerman Floorboxes. Their attractive high gloss finish and easy to use labelling system makes them popular with both installers and end users alike. Installation is made easy with the unique colour coded cable saddle and the use of industry standard IDCs.

Connectix Category 6A FTP Modules are fully compliant with the ANSI/TIA Category 6A Standards and provide an outstanding transmission medium free from the problems of alien crosstalk. When used in conjunction with Category 6A FTP Patch Panels and FTP Cable the user will achieve a link performance far exceeding the Category 6A requirements.





Features & Benefits

- Cat 6A performance
- Suitable for 10-Gigabit Ethernet
- Fully shielded die-cast design
- No special tooling required
- Industry standard Keystone fitting
- Tool-less snap-to-fit module

Specification

Mounting hole size	19.3 x 14.7mm
Recommended back-box depth	32mm
Width	16.3mm
Depth	38mm
Height	21mm
Copper conductor diameter	24 AWG
Life (operations)	Min. 750
Shielding housing	Zinc die-cast
Colour code	T568B
Conforms to	ISO/IEC 11801; EN 50173-1 ANSI/TIA 568-C Category 6A IEEE802.3an 10-Gigabit Ethernet

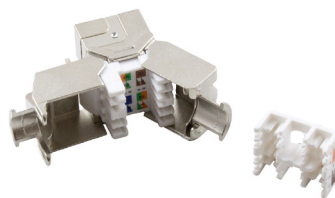
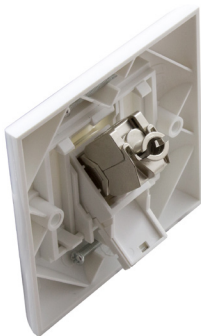
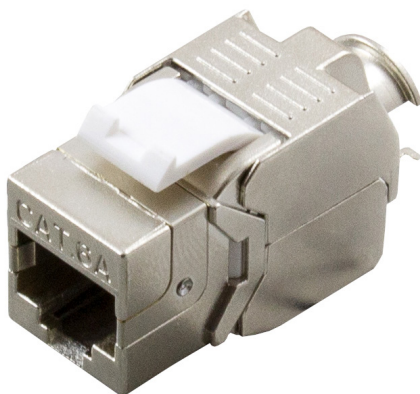
Ordering Information

Product Description	Part Number
CCS Cat 6A FTP Tool-less Keystone Module	008-010-010-10
CCS Angled Shuttered Euro Fascia	008-010-010-18

Connectix Category 6A Keystone Modules have been designed to provide the exceptional performance required to support extremely high speed applications, including 10-Gigabit Ethernet.

When used with Connectix Category 6A Cable, the Category 6A Keystone Modules provide an outstanding transmission medium free from the problems of alien crosstalk.

The tool-less and snap-to-fit module ensures a quick and easy to terminate installation, and the standard Keystone fitting allows the use of the same module in patch panels, wall outlets and a variety of other applications.





Features & Benefits

- Easy to install
- Suitable for 10-Gigabit Ethernet applications
- High Density 24 ports
- Rear cable management
- Earth connection
- Robust all steel construction

Specification

Width	483mm (19")
Depth	98mm
Height	1u (44.5mm)
Material	Mild steel
Finish	Matt black polyester paint
Socket	High performance side entry RJ45 jacks
Socket Labels	Write-on silk screen on panel front
IDC Labelling	Colour coded to T568B
Conforms to	TIA/EIA-568-C Category 6A Specification

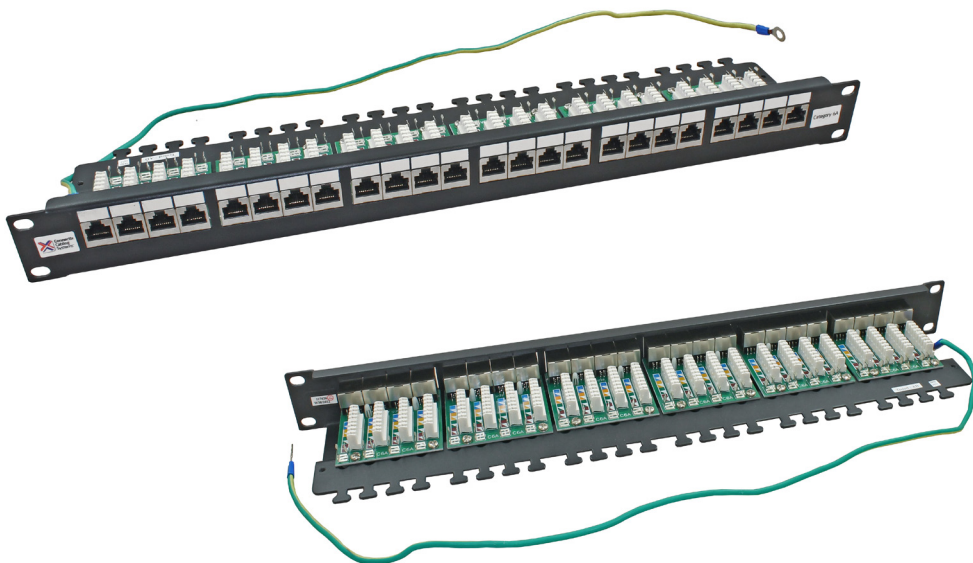
Ordering Information

Product Description	Part Number
CCS Category 6A 2020 24 Way FTP Panel	009-002-001-40

Connectix Category 6A Patch Panels provide exceptional performance for high speed LAN's including 10-Gigabit Ethernet applications. The boards are designed using the latest noise compensation techniques and the shielding feature can minimise the risk of EMI.

The 2020 Series FTP Panel offers Cat 6A performance and has been designed to present the cable termination IDCs horizontally on a tray at the rear of the panel, making termination and cable management easier.

All sockets in the panel are commonly linked through the panel and can be grounded to the rack using the earth wire provided. When combined with Connectix Category 6A FTP Modules and Cable, the link will perform well in excess of Category 6A specifications.





Features & Benefits

- Enhanced patch lead management
- For use in cabinets and open racks
- Patent pending design
- Suitable for Connectix Express assemblies
- Integrated cable management bar
- Earth connection
- Robust all steel construction

Specification

Width	483mm (19")
Depth	130mm
Height	44.45mm
Material	Mild steel
Finish	Fine textured black paint (front) Bright zinc plate (rear)

Ordering Information

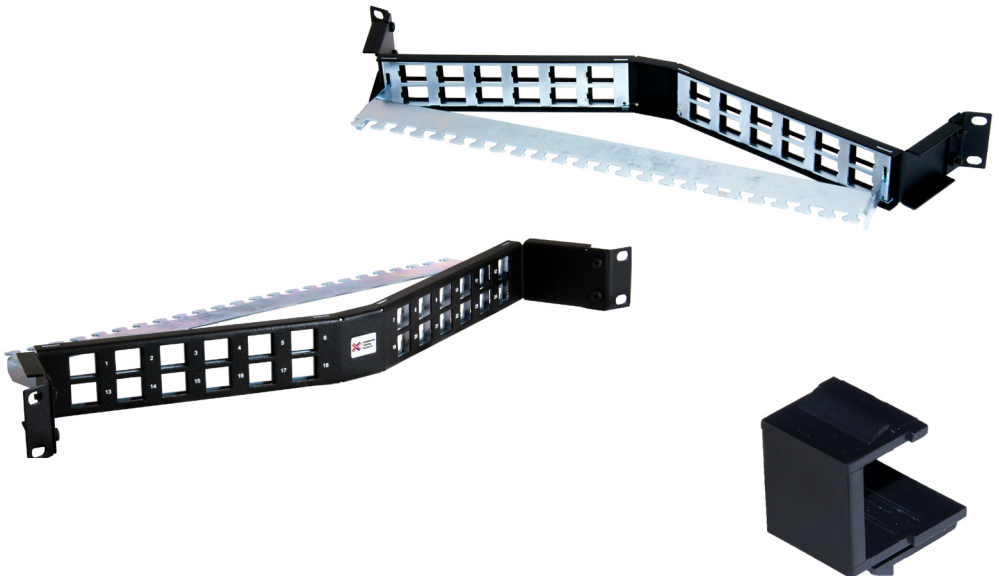
Product Description	Part Number
CCS 24 Way Unloaded FTP Angled Panel	009-010-010-35
CCS Keystone Panel Blanks (Black)	009-010-009-10

The Connectix 24 Way Angled Patch Panel offers enhanced patch lead management in any style of cabinet. The patent pending design naturally sweeps patch leads to the side of the racking, without the panel protruding beyond the rack or cabinet profiles.

Supplied unloaded, the fully shielded patch panel accepts 10G high performance Keystone Modules which are simply clicked into position. The 24 way Keystone Panel offers high density and the capability for 10G data transmission performance levels.

An integrated rear management tray supports the cabling and offers individual cable tie positions.

For the optimum in on-site installation efficiency, Connectix Express Pre-terminated and Pre-tested assemblies may be used.





Features & Benefits

- Fully shielded
- High density, 24 ports
- Suitable for FTP Tool-less Keystone Modules
- Suitable for Connectix Express assemblies
- Integrated cable management tray
- Earth connection
- Robust all steel construction

Specification

Width	483mm (19")
Depth	155mm
Height	44.45mm (1u)
Material	Mild steel
Finish	Fine textured black paint (front) Bright zinc plate (rear)

Ordering Information

Product Description	Part Number
CCS Unloaded 24 Way 1u FTP Keystone Panel	009-010-010-00
CCS Keystone Panel Blanks (Black)	009-010-009-10

The Connectix 24 Way Keystone Patch Panels offer high density and the capability for 10G data transmission performance levels.

Supplied unloaded - the patch panel installation and termination time can be greatly reduced when Connectix Tool-less Snap-to-fit Keystone Modules are used in the panel.

To further increase on-site installation efficiency, Connectix Express Pre-terminated and Pre-tested Modules can also be used.





Cable Specification

Conforms to	IEEE 802.3: 10Base-T; 100Base-T; 1000Base-T 10GBase-T standards: ANSI/TIA 568C: ISO/IEC 11801 2nd ed. IEC 61156-5 2nd ed.; EN 50173-1; EN 50288-10 RoHS2002/95/EC
Fire Rating	IEC 60332-1; IEC 60754-1; IEC 60754-2; IEC 61034
Conductor	Bare copper wire (AWG 23)
Insulation	Polyethylene, Ø 1.45 mm
Drain Wire	Tinned copper
Shield Around Each Pair	Alu / polyester tape
Sheath	LSZH Ivory
Bending Radius	≥ 35 mm without load; ≥ 70 mm with load
Temperature Range	Operation -20°C up to +60 °C Installation 0°C up to +50 °C
Outer Diameter	7.0 mm
Max Pulling Tension	78 N

Electrical Specification

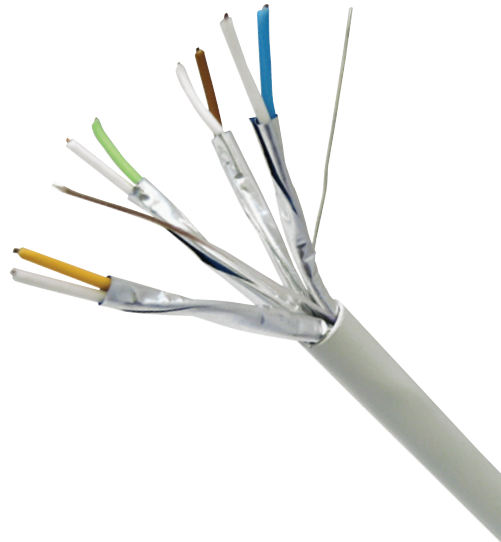
DC Resistance:	< 9 Ω /100m
DC Resistance Unbalance	≤ 2%
Insulation Resistance (500V)	≥ 5000 MΩ km
Capacitance Unbalance (pair to ground)	< 300 pF/100m
Characteristic Impedance @100 MHz	100 ± 5 Ω
Nominal Velocity of Propagation	Approx. 74%
Transfer Impedance (mΩ/m)	1MHz 10MHz 30MHz 100MHz

Ordering Information

Product Description	Part Number
CCS Cat 6A U/FTP LSZH Solid Cable	001-003-003-06

Connectix Category 6A U/FTP Cable has been designed to provide the exceptional performance required to support extremely high speed applications, including 10-Gigabit Ethernet.

The individually shielded pairs ensure maximum transmission, free from the problems of NEXT and alien crosstalk. The sheath is a Low Smoke Zero Halogen (LSZH) material, as specified in many public buildings.





Features & Benefits

- Independently tested to Cat 6A and 10GBASE-T channel performance standards
- Conform to ANSI/TIA 568-C Category 6A
- Uses fully shielded cable
- Available from stock in lengths from 1 to 5 metres

Specification

Plug	High performance modular plug
Wiring Specification	Straight through
Cable	Category 6A shielded cable
Cable Shield	Overall braid and individually foiled pairs
Boot	Low profile with latch protection
Conforms to	ANSI/TIA 568-C Category 6A

Ordering Information

Cat 6A SFTP RJ45 Patch Leads

Colour	Length (metre)	Part Number	Length (metre)	Part Number
Grey	1m	003-010-010-01C	2m	003-010-020-01C
Blue	1m	003-010-010-03C	2m	003-010-020-03C
Green	1m	003-010-010-04C	2m	003-010-020-04C
Red	1m	003-010-010-05C	2m	003-010-020-05C
Yellow	1m	003-010-010-06C	2m	003-010-020-06C
Grey	3m	003-010-030-01C	4m	003-010-040-01C
Blue	3m	003-010-030-03C	4m	003-010-040-03C
Green	3m	003-010-030-04C	4m	003-010-040-04C
Red	3m	003-010-030-05C	4m	003-010-040-05C
Yellow	3m	003-010-030-06C	4m	003-010-040-06C
Grey	5m	003-010-050-01C		
Blue	5m	003-010-050-03C		
Green	5m	003-010-050-04C		
Red	5m	003-010-050-05C		
Yellow	5m	003-010-050-06C		

Connectix Magic Patch Brand Cat 6A SFTP Patch Leads are designed to complete the Cat 6A Channel, providing support for extremely high-speed applications including 10GBASE-T.

The Patch Leads are made from shielded Cat 6A cable and are terminated using high performance modular plugs. The fully shielded cable increases signal isolation and helps to prevent contaminant noise from entering the lead. These SFTP patch leads are complementary to the Connectix Cat 6A Cabling System and will provide support for future bandwidth-hungry applications.

Leads are available from stock in lengths from 1 to 5 metres, and in a number of different colours.

