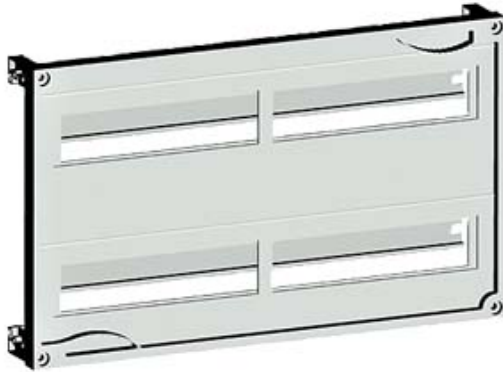





ALPHA 160 DIN, ASSEMBLY KIT F. MODULAR  
 INSTALLATION DEVICES, TIER SPACING 125MM  
 H=300 W=500



## Accessories

accessories		others	
General Product Approval		Declaration of Conformity	Test Certificates
 GOST	<a href="#">other</a>	 EAC	 EG-Konf.
			<a href="#">Special Test Certificate</a> <a href="#">Type Test Certificates/Test Report</a>

## Test Certificates

[other](#)

## Further information

Information- and Downloadcenter (Catalogs, Brochures,...)  
<http://www.siemens.com/lowvoltage/catalogs>

Industry Mall (Online ordering system)  
<https://eb.automation.siemens.com/mall/en/WW/Catalog/Product/8GK43012KK21>

Service&Support (Manuals, Certificates, Characteristics, FAQs,...)  
<http://support.automation.siemens.com/WW/view/en/8GK43012KK21/all>

Image database (product images, 2D dimension drawings, 3D models, device circuit diagrams, ...)  
[http://www.automation.siemens.com/bilddb/cax\\_en.aspx?mlfb=8GK43012KK21](http://www.automation.siemens.com/bilddb/cax_en.aspx?mlfb=8GK43012KK21)

CAX-Online-Generator  
<http://www.siemens.com/cax>

**Tender specifications**

<http://ausschreibungstexte.siemens.com/tiplv>

**last modified:**

11.03.2015