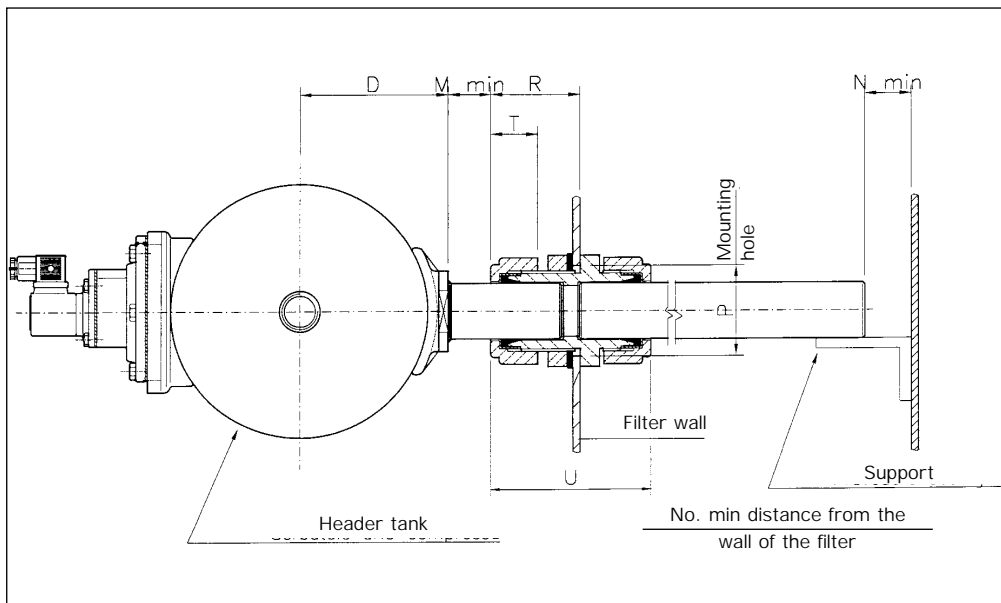
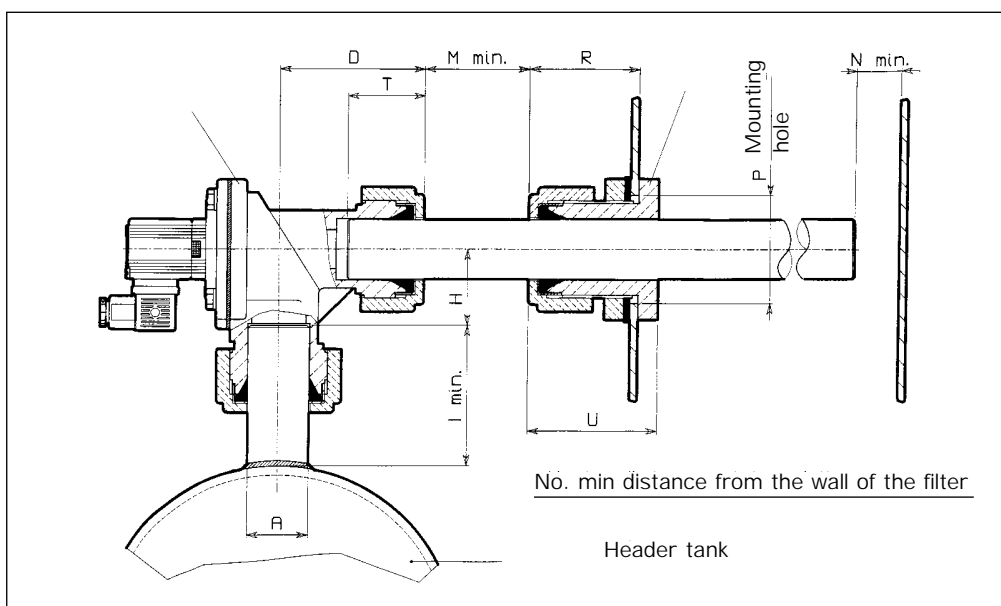


PTD ASSEMBLING LAYOT OVER "FULL IMMERSION" TANK

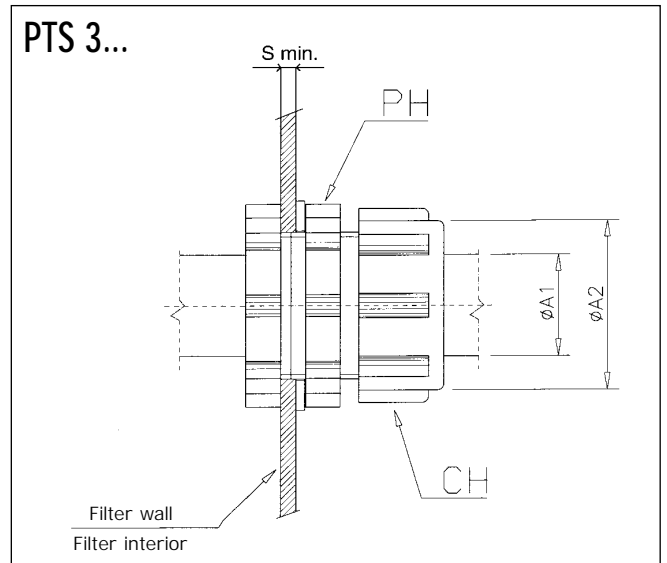
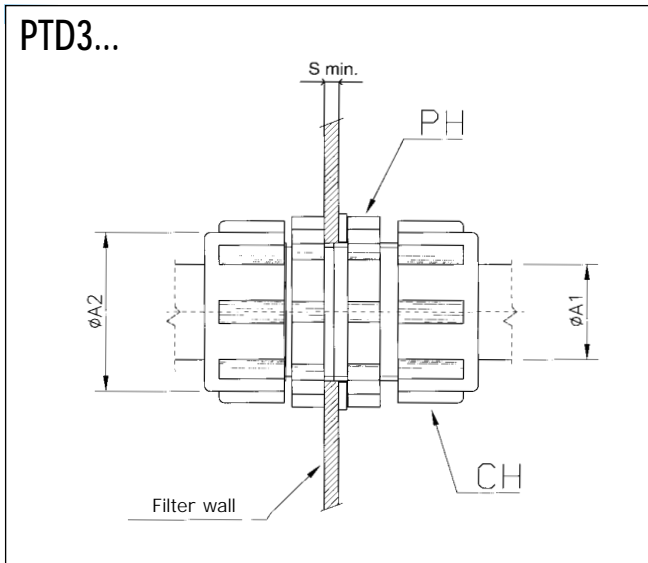


TYPE	A Ø	D	M	N	T	Weight kg	TYPE	A Ø	R	P Ø	U	Weight Kg
VEP506	3/4"	92	15	48	30	0,9	PTD306	3/4"	54	42	102	0,35
VEP508	1"	106	20	50	36	1,2	PTD308	1"	57	54	106	0,6
VEP 512+514	1 1/2"	151	30	54	42	2,3	PTD314	1 1/2"	76	70	140	1,3
VEP516	2"	138	30	60	42	2,8	PTD316	2"	77	85	148	2

PTS ASSEMBLING LAYOUT OVER THROUGH TUBE



TYPE	A Ø	D	H	I	M	N	T	Weight kg	TYPE	A Ø	R	P Ø	U	Weight kg
VEP306	3/4"	67	40	50	56	48	30	0,9	PTS306	3/4"	54	42	65	0,25
VEP308	1"	80	48	60	70	50	36	1,2	PTS308	1"	57	54	68	0,4
VEP314	1 1/2"	99	53	85	80	54	42	2,3	PTS314	1 1/2"	76	70	94	0,86

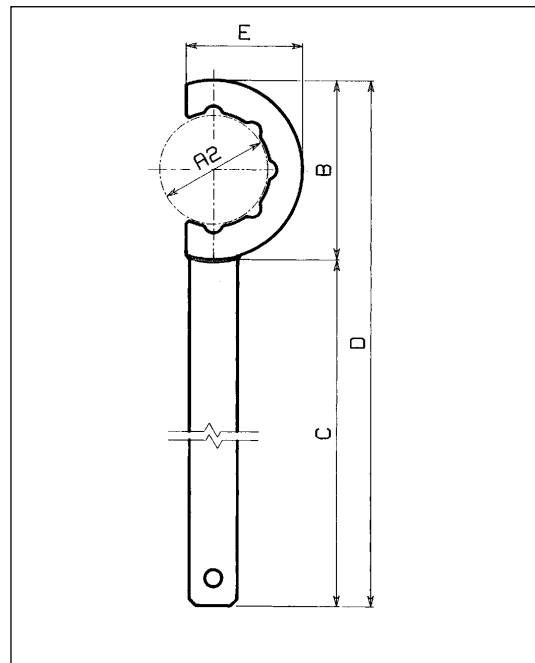


MODEL	A 1 Ø	A1 Ø max.	A 2 Ø	wrench CH	wrench PH	S min.	
PTD 306	¾"	26,7	27	48	CH06	PH06	2
PTD 308	1"	33,4	33,8	61	CH08	PH08	2,5
PTD 314	1½"	48,3	48,8	82	CH14	PH14	3
PTD 316	2"	60,3	60,8	95	CH16	PH16	3

MODEL	A 1 Ø	A1 Ø max.	A 2 Ø	wrench CH	wrench PH	
PTS 306	¾"	26,7	27	48	CH06	PH06
PTS 308	1"	33,4	33,8	61	CH08	PH08
PTS 314	1½"	48,3	48,8	82	CH14	PH14

Tolerance on external tube diameters according to UNI 6363.

ASSEMBLING CH AND PH WRENCHES



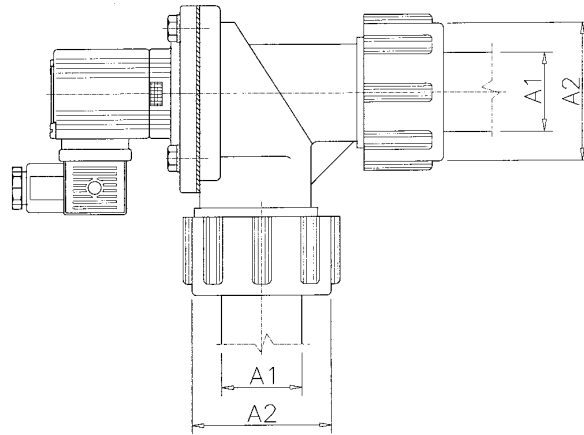
CH WRENCH for ring nut tightening

TYPE	A1 Ø	A2 Ø	B Ø	C	D	E	WEIGHT kg
CH06	¾"	48	80	200	280	55	0,24
CH08	1"	61	100	250	350	68	0,44
CH14	1½"	82	130	300	430	85	0,7
CH16	2"	95	150	350	500	100	0,78
CH20	2½"	115	170	350	520	110	0,8
CH24	3"	128	190	350	540	120	0,9

PH WRENCH for bolts tightening

TYPE	A1 Ø	A2 Ø	B Ø	C	D	E	WEIGHT Kg
PH06	¾"	55	80	200	280	55	0,24
PH08	1"	70	100	260	360	65	0,31
PH14	1½"	90	130	270	400	85	0,5
PH16	2"	95	150	350	500	100	0,78

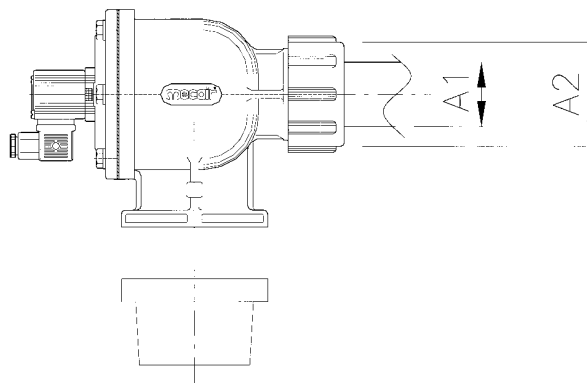
300 SERIES DIAPHRAGM VALVES



TYPE VALVE	A 1 Ø	A 1 Ø max.	A 2 Ø	wrench CH	
306	¾"	26,7	27	48	CH06
308	1"	33,4	33,8	61	CH08
312	1½"	48,3	48,8	82	CH14
316	2"	60,3	60,8	95	CH16

Tolerance on external tube diameters according to UNI 6363.

DIAPHRAGM VALVES SERIES 600 or 700



TYPE VALVE	A 1 Ø	A 1 Ø max.	A 2 Ø	wrench CH	
608	1"	33,4	33,8	61	CH08
612	1½"	48,3	48,8	82	CH14
614	1½"	48,3	48,8	82	CH14
616	2"	60,3	60,8	95	CH16
620	2½"	76,1	76,9	115	CH20

TYPE VALVE	A 1 Ø	A 1 Ø max.	A 2 Ø	wrench CH	
708	1½"	48,3	48,8	82	CH08
712	2"	60,3	60,8	95	CH14
714	2"	60,3	60,8	95	CH14
716	2½"	76,1	76,9	115	CH16
720	3"	88,9	89,8	128	CH20

Tolerance on external tube diameters according to UNI 6363.





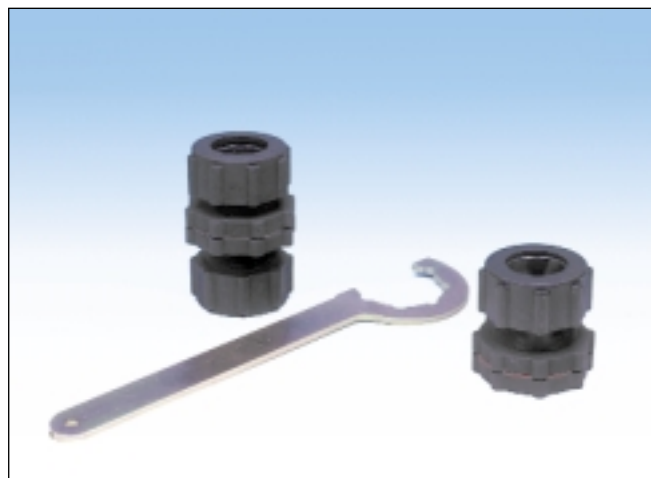
The bulkhead fittings connect the valve to the blow tube through the wall of the filter. An important saving of time and material is allowed by the quickness of the connection to a non threaded blow tube with no need for welding or use of additional fittings.

Two version of the bulkhead compression fittings are available:

- **PTD**: two piece tube connection fittings,
- **PTS**: through tube connection fittings.

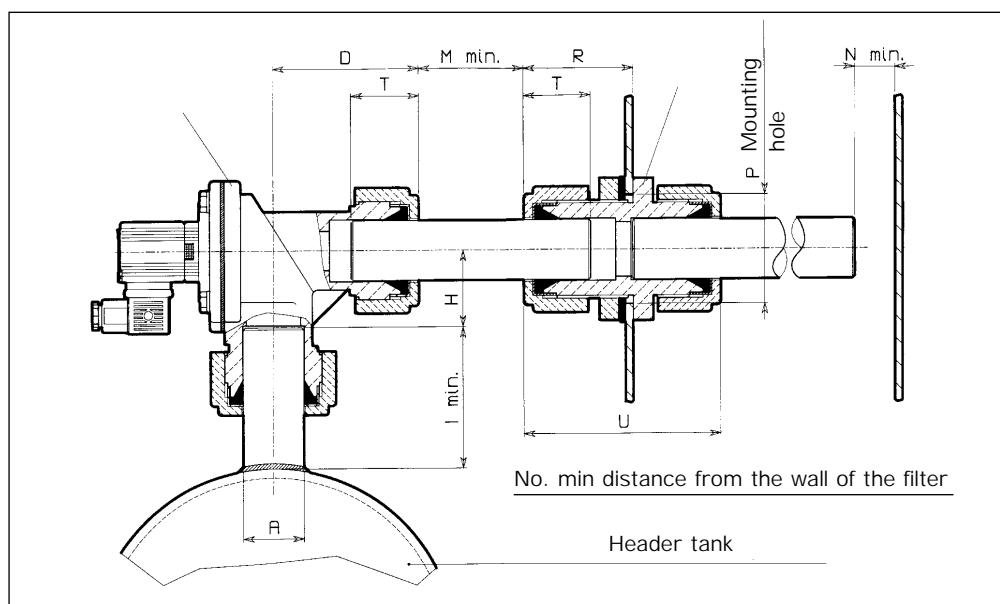
Use smooth non threaded pipes for connecting the header tank and filter blow tubes to the valve. Then tighten the quick fit connections with the proper size CH wrench (for nut rings) and PH (for bolts).

Note: these fittings have been designed only for the pneumatic seal, not for the mechanical support of the tank.



CONSTRUCTION MATERIAL	
Body	Anodized die-cast aluminium
Gaskets	NBR: -30°C / +100°C
	Silicone: -60°C / +200°C

PTD ASSEMBLING LAYOUT OVER TWO PIECE TUBE



TYPE	A Ø	D	H	I	M	N	T	Weight kg	TYPE	A Ø	R	P Ø	U	Weight kg
VEP306	¾"	67	40	50	56	48	30	0,9	PTD306	¾"	54	42	102	0,35
VEP308	1"	80	48	60	70	50	36	1,2	PTD308	1"	57	54	106	0,6
VEP314	1 ½"	99	53	85	80	54	42	2,3	PTD314	1 ½"	76	70	140	1,3
									PTD316	2"	77	84	148	2