

## Precision press knurl HSSE-PM with chamfer form AA

for use on knurl presses 19003-19009



### Application:

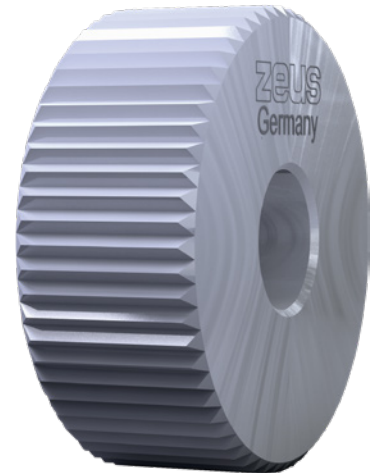
For creating knurl profiles in accordance with DIN 82 RAA knurl in steel, stainless steel and NF metal material groups.

### Execution:

- hardness: approx. HRC 62-64, teeth milled fine, face sides and hole ground, HSSE PM, 45° chamfer

### Advantage:

- High wear resistance
- High hot hardness and compressive strength



<b>Art. no.</b>	<b>19014 033</b>
<b>Brand</b>	ZEUS
<b>Manufacturer Part Number</b>	41012735
<b>Partition</b>	0.6 mm
<b>Diameter</b>	20 mm
<b>Width</b>	6 mm
<b>Bore diameter</b>	6 mm
<b>Form</b>	AA
<b>Knurling shape created on workpiece (DIN 82)</b>	RAA
<b>Material to be processed</b>	Steel, Stainless steel, Non-ferrous metal
<b>Min./max. Vc in steel</b>	25-50 m/min
<b>Min./max. Vc in stainless steel</b>	15-50 m/min
<b>Min./max. Vc in non-ferrous metals</b>	25-90 m/min
<b>DIN</b>	403
<b>Gross Weight</b>	0.010 kg
<b>Product Group</b>	1FP