

SURFACE MOUNT BATTERY CLIPS/CONTACTS

AVAILABLE ON TAPE AND REEL

- "Flow-Hole" SMT solder tail design for increased joint strength
- Tin-Nickel plating is ideal for lead free, high temperature soldering
- Matte Tin Plate for lower soldering temperatures ideal where other temperature sensitive components are being used

Refer to page 32 for Battery Contact Layout & Mounting Details

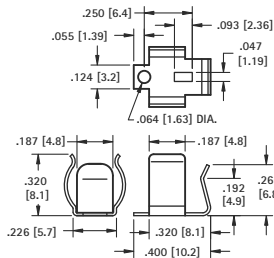
"AAAA" - "A27"



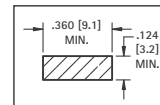
MATERIAL: .010 (.25) Spring Steel

| TIN-NICKEL PLATE | MATTE TIN PLATE |
|-------------------------|-------------------------|
| CAT. NO. ON TAPE & REEL | CAT. NO. ON TAPE & REEL |
| 50 | 50TR |
| 550 | 550TR |

Tape & Reel Spec's: 24mm wide; 16mm pitch; 13 inch reel, (500 pieces per reel)



Pad Layout



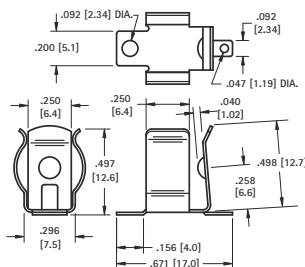
"AAA" - "N" - "A23"



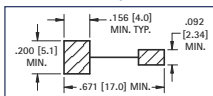
MATERIAL: .010 (.25) Spring Steel

| TIN-NICKEL PLATE | MATTE TIN PLATE |
|-------------------------|-------------------------|
| CAT. NO. ON TAPE & REEL | CAT. NO. ON TAPE & REEL |
| 55 | 55TR |
| 555 | 555TR |

Tape & Reel Spec's: 32mm wide; 16mm pitch; 13 inch reel, (300 pieces per reel)



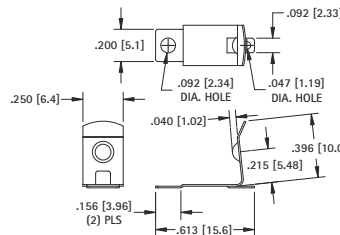
Pad Layout



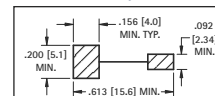
MATERIAL: .010 (.25) Spring Steel

| TIN-NICKEL PLATE | MATTE TIN PLATE |
|-------------------------|-------------------------|
| CAT. NO. ON TAPE & REEL | CAT. NO. ON TAPE & REEL |
| 56 | 56TR |
| 556 | 556TR |

Tape & Reel Spec's: 32mm wide; 20mm pitch; 13 inch reel, (250 pieces per reel)



Pad Layout



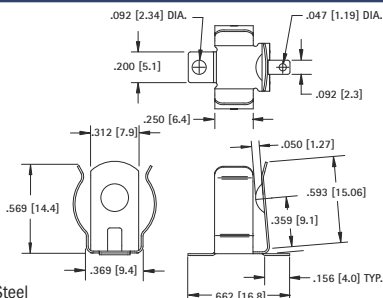
"AA" - "CR2" - "A"



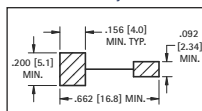
MATERIAL: .012 (.30) Spring Steel

| TIN-NICKEL PLATE | MATTE TIN PLATE |
|-------------------------|-------------------------|
| CAT. NO. ON TAPE & REEL | CAT. NO. ON TAPE & REEL |
| 53 | 53TR |
| 553 | 553TR |

Tape & Reel Spec's: 32mm wide; 24mm pitch; 13 inch reel, (150 pieces per reel)



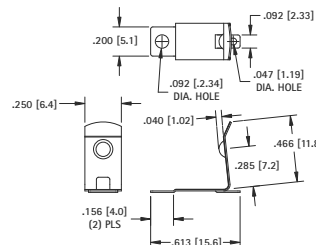
Pad Layout



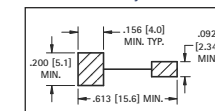
MATERIAL: .010 (.25) Spring Steel

| TIN-NICKEL PLATE | MATTE TIN PLATE |
|-------------------------|-------------------------|
| CAT. NO. ON TAPE & REEL | CAT. NO. ON TAPE & REEL |
| 57 | 57TR |
| 557 | 557TR |

Tape & Reel Spec's: 32mm wide; 20mm pitch; 13 inch reel, (250 pieces per reel)



Pad Layout



SURFACE MOUNT LEAF-SPRING CONTACTS

AVAILABLE ON TAPE AND REEL

- Economical & reliable contacts are ideal for surface mount applications
- Unique spring tension contacts adjust to variations in battery length
- Reliable spring tension contacts assure low contact resistance
- SMT solder tail with "flow-hole" design for increased joint strength

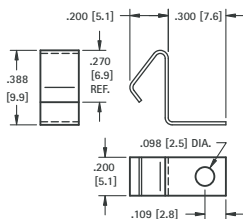
"AAA" - "AAAA" - "12V" - "N"



MATERIAL: .010 (.25) Spring Steel

| TIN-NICKEL PLATE | MATTE TIN PLATE |
|-------------------------|-------------------------|
| CAT. NO. ON TAPE & REEL | CAT. NO. ON TAPE & REEL |
| 5230 | 5230TR |
| 5330 | 5330TR |

Tape and Reel Spec's: 24mm wide; 12mm pitch; 13 inch reel (400 pieces per reel)



"AA" - "CR2" - "A" - "9V"



MATERIAL: .010 (.25) Spring Steel

| TIN-NICKEL PLATE | MATTE TIN PLATE |
|-------------------------|-------------------------|
| CAT. NO. ON TAPE & REEL | CAT. NO. ON TAPE & REEL |
| 5231 | 5231TR |
| 5331 | 5331TR |

Tape and Reel Spec's: 32mm wide; 16mm pitch; 13 inch reel (250 pieces per reel)

