

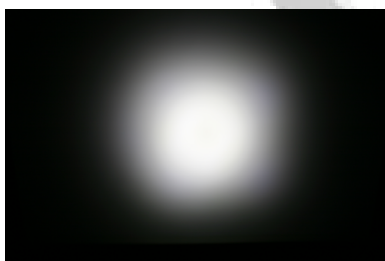
Cute-3-XP (MR11), lenses for CREE XP-E LEDs



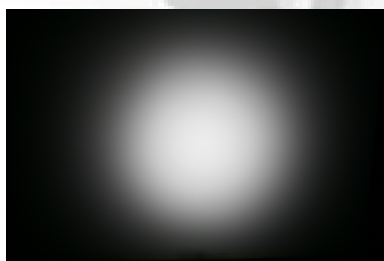
- Specially designed for Cree XLAMP XP-E series of LEDs.
- Special care taken to make a uniform white or warm white illumination. Lenses work well with other colors, too.
- Lens material optical grade PMMA. Allows use of high current and temperature conditions (105°C/220°F)
- No lens holder. Fastening to heat sink with droplets of glue.
- Best available optical efficiency, up to 90%.

LENS TYPES

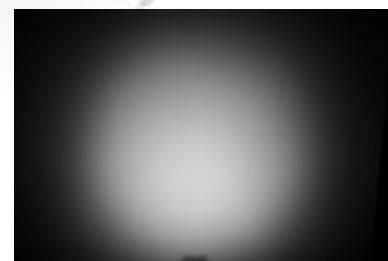
NAME	ORDERING CODE	FWHM Angle
Cute-3 Smooth Spot	C10754_Cute-3-SS-XP	±5°
Cute-3 Medium	C10755_Cute-3-M-XP	±11°
Cute-3 Wide	C10756_Cute-3-W-XP	±20°



C10754_Cute-3-SS-XP



C10755_Cute-3-M-XP

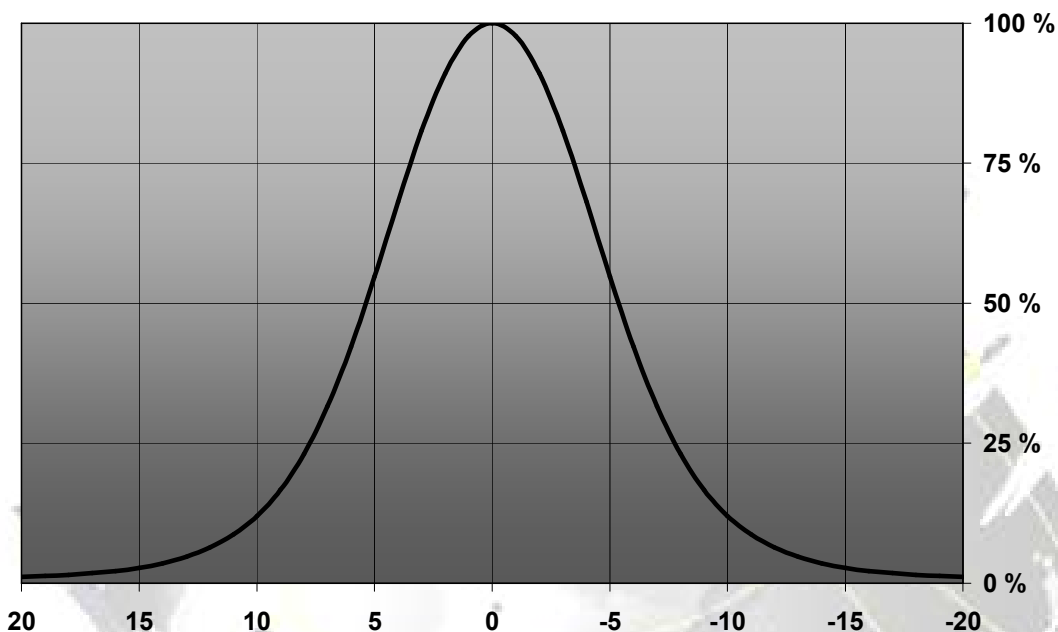


C10756_Cute-3-W-XP

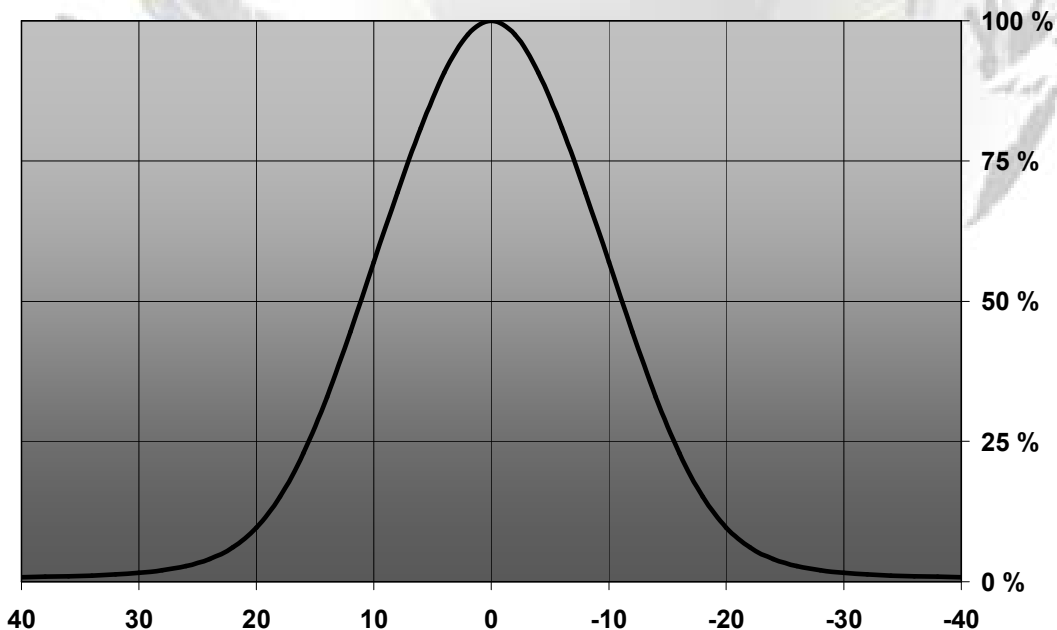
© Ledil Oy – PRELIMINARY - Subject to change without prior notice

MEASUREMENT DATA

Relative Intensity of C10754_Cute-3-SS-XP

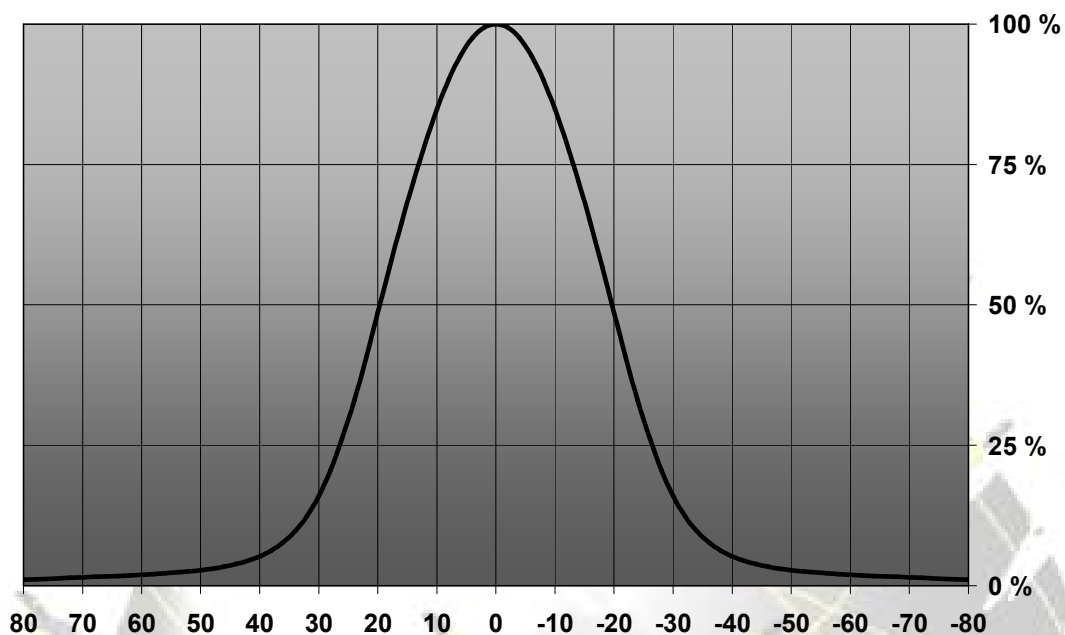


Relative Intensity of C10755_Cute-3-M-XP



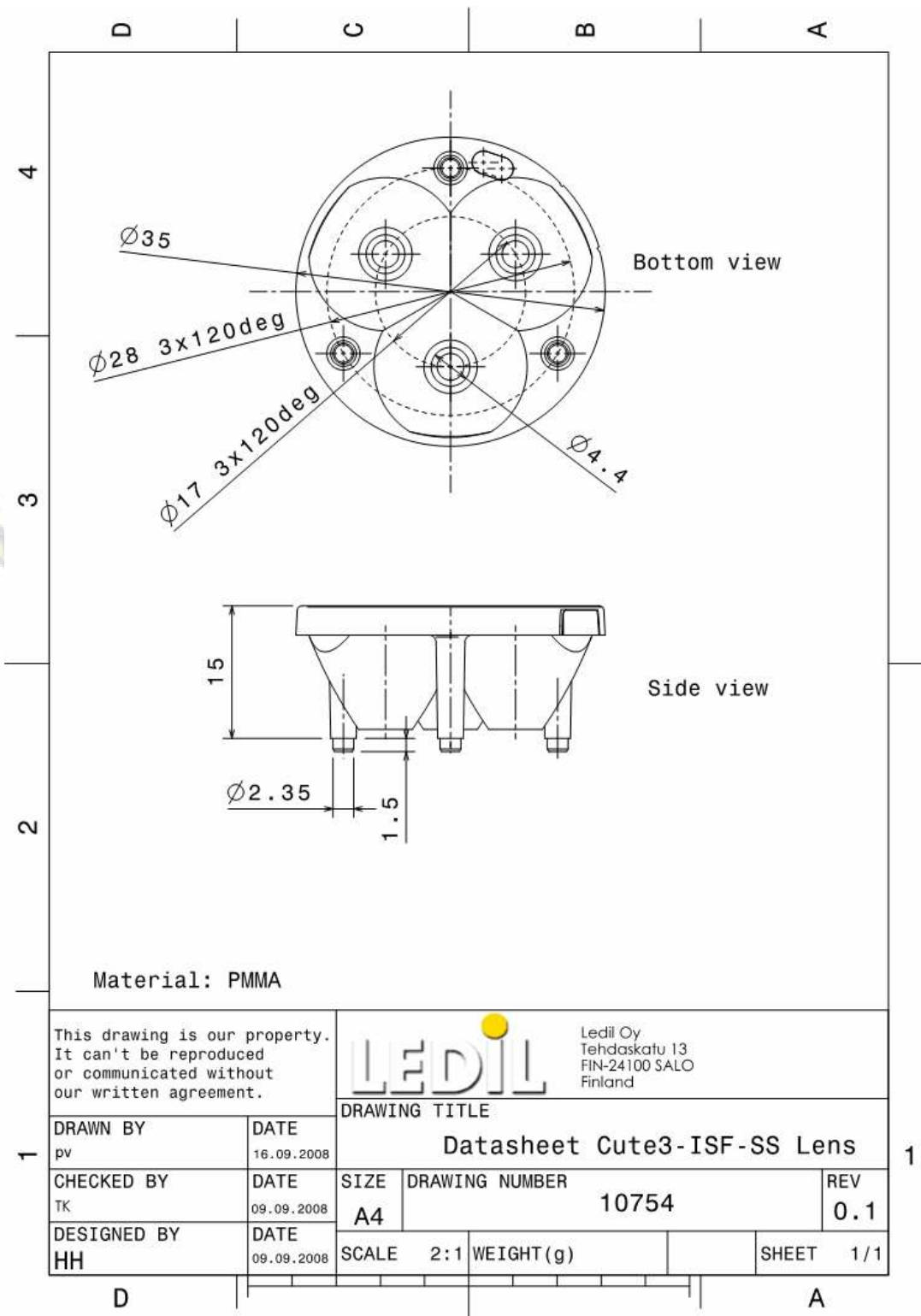
© Ledil Oy – PRELIMINARY - Subject to change without prior notice

Relative Intensity of C10756_Cute-3-W-XP



EULUMDAT & IES FILES AVAILABLE BY REQUEST

DRAWINGS



© Ledil Oy - PRELIMINARY - Subject to change without prior notice