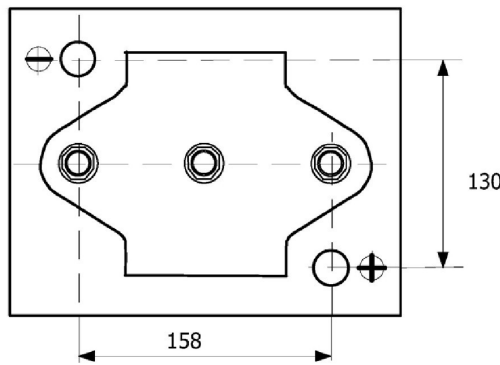
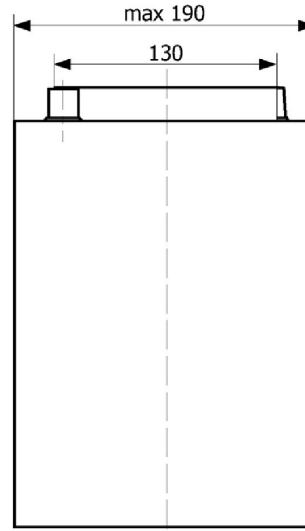
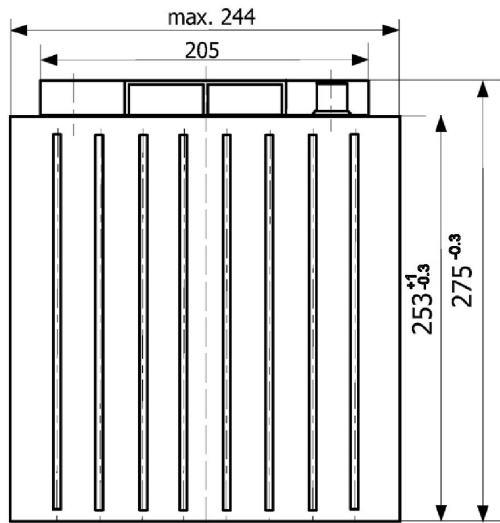


Central Article Code: GC2090G01-A

ETN Code or Other: ES1000-6

Created: 06/09/2005

Modified: 26/05/2011



Final Outlook	GC201-A
Approval date	01/10/2005

PERFORMANCES		CONTAINER	
Voltage (V):	6 V	Type:	GC2 GREY MEDIUM
C20 (Ah):	195.0 20 h	Hold Down:	B0
Rc (min):	0	H. D. Adapter:	No
Cranking (A):	900 EN	COVER	
Vibration:	V3 (35Hz/6g/20h)	Type:	DIN GREY MEDIUM
Endurance:	250 cycles@100%	Polarity:	ETN 0
Charge:	CHARGED	Terminals:	EN taper post
Technology:	GEL	Terminal Adapter:	No
Grid :	Ca/Ca	SOCI:	No
WEIGHT AND STD. DIMENSIONS		Ventilation:	Independent
Battery Weight (kg):	29.00	Filter:	No
Volume acid (l):	0.00	Lateral Plug:	No
Length (mm):	244	PLUGS	
Width (mm):	190	Type:	3 x M18 Valve GREY MEDIUM
Height (mm):	275	HANDLES	
		Type:	None
		OTHERS	
		Degassing Tube:	No

All figures show nominal values. Tolerances are according to EN50342 and applicable European Regulations