

# VDE TOOLS

## ▶ Adjustable spanner

According to DIN 3117, IEC 60900:2004, two-colour multilayer dip insulation, 1000 V, jaw position 15°, with scale graduation

Art.-No.	Width across flats	Weight in g	1000 V
16-773 VDE	0-26	300	⚡
16-774 VDE	0-30	500	⚡
16-775 VDE	0-35	800	⚡



## ▶ Insulating protective gloves

for work under voltage up to 1000 Volt, made of natural latex high elasticity piece tested according to DIN EN 60903, VDE 0682-part 311, test voltage 5000 Volt

Art.-No.	Type	Thickness	Length	Weight in g	1000 V
17-501 VDE	Größe 10	1.6 mm	360 ± 15 mm	175	KL. 0



17-501 VDE

## ▶ NH plug-in-grip

with leather cuff 380 x 220 mm for inserting or removing NH fuse links

Art.-No.	Type	Weight in g	1000 V
17-521 VDE	Siemens-handle for NH fuses 00-3, protection of forearm at higher currents (arc fault due to system)	450	⚡



17-521 VDE

## ▶ Rubber cover, red

DIN EN 61112 / VDE 0682-511, smooth surface, for work on electrical installations

Art.-No.	Type	Thickness	Weight in g	1000 V
17-702 VDE	500 x 500 mm	1.6 mm	590	⚡ GS D'E
17-703 VDE	1000 x 1000 mm	1.6 mm	1936	⚡ GS D'E



17-703 VDE

## ▶ VDE rubber mat / floor mat, grey

Surface one side smooth and one side slip-resistant, frost-resistant, according to REACH, free of nitrosamine and PAH.

For the removal and installation of side insulation in electrical systems.

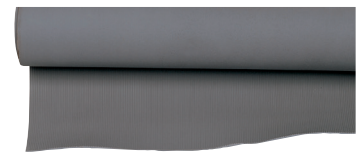
**Not for mobile use as PSA accessory!**

Art.-No.	Type	Weight in g	1000 V
17-707 VDE	1000 x 1000 x 4,5 mm DIN VDE 0303	5400	-

To be used for mobile side insulation according to BGR A3!

**Not to be used as flooring material!**

Art.-No.	Type	Weight in g	1000 V
17-706 VDE	1500 x 1000 x 3,0 mm DIN 6111 / VDE 0680	4850	⚡ GS D'E



17-706 VDE

NEW

## ▶ Plastic clip

for fixing cover cloths, made of sturdy plastic with concealed spring and rubber web to prevent slipping

Art.-No.	Type	Length	Weight in g	1000 V
17-523 VDE	Clamping width 15 mm, opening width 40 mm	160 mm	60	⚡



17-523 VDE

## ▶ Self-clamping sleeves

Protect against contact with a live cable end

Art.-No.	Type	Weight in g	1000 V
17-551 VDE	Ø 10 x 80 mm	20	⚡
17-552 VDE	Ø 20 x 85 mm	30	⚡
17-553 VDE	Ø 30 x 100 mm	60	⚡



17-552 VDE

## VOLTAGE TESTER

### ▶ 17-531 VDE

#### VDE voltage tester Steinel Volt Check 3

DIN EN 61243-3, DIN CDE 0682, Teil 401, IEC 61010

This voltage tester can be used universally and is built according to the latest safety regulations and guarantees safe and reliable operation. The voltage tester features the following functions: Voltage testing up to 690 V AC/DC phase - phase, automatic AC/DC detection, bright LED display, robust, ergonomically shaped housing for good handling, captive measuring tip shoe.

Weight: 110 g



17-531 VDE

### ▶ 4-344 VDE

#### VDE voltage tester slot blade 3.5 x 0.7 x 110 mm

VDE voltage tester 220 - 250 V, according to DIN VDE 0680 part 6: 1977-04.

Blade: chrome vanadium, nickel-plated, fully insulated, handle: transparent plastic.

Length: 196 mm, weight: 31 g



4-344 VDE

### ▶ 4-343 VDE

#### VDE voltage tester slot blade 3.0 x 0.7 x 60 mm

VDE voltage tester 220 - 250 V, according to DIN VDE 0680 part 6: 1977-04.

Blade: chrome vanadium, nickel-plated, fully insulated, handle: transparent plastic.

Length: 136 mm, weight: 20 g



4-343 VDE

## VDE CABLE CUTTING TOOLS

### ▶ Cable knives, dismantling knives

Stainless steel blade, with protective blade cap, impact-resistant plastic handle

Art.-No.	Type	Blade length	Total length	Weight in g	1000 V
15-521 VDE	Straight blade	50 mm	180	66	
15-522 VDE	Hook blade	35 mm	180	66	
15-523 VDE	Special blade + slide foot	35 mm	180	73	



15-521 VDE



15-522 VDE



15-523 VDE

### ▶ Automatic wire stripper with stop screw

For common flexible and solid conductors (von 0,2 - 6,0 mm<sup>2</sup>)

Adjustable, removable length stop from 5 - 12 mm

Art.-No.	Type	Total length	Weight in g	1000 V
15-531 VDE	glass fibre reinforced plastic, fully insulated	200	110	



15-531 VDE

### ▶ Metal saw bow

Strong die-cast aluminium frame, two-colour multilayer dip insulation

Art.-No.	Type	Total length	Weight in g	1000 V
17-541 VDE	Saw blade (150 mm) interchangeable	270	180	
17-547 VDE	Saw blade (300 mm) interchangeable hardened teeth	460	580	



17-541VDE