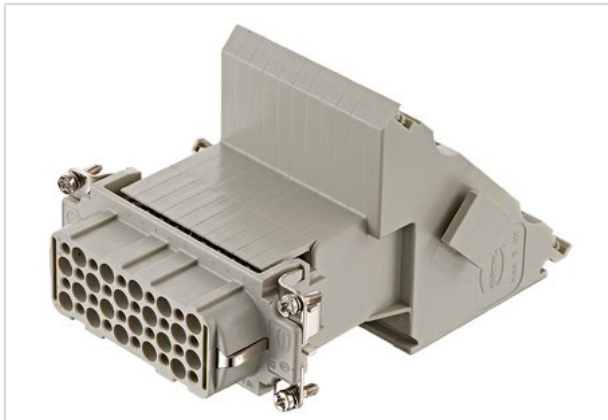


## Han D 40 Pos. F Insert Term. Block Left



Part number	09 21 040 4702
Specification	Han D 40 Pos. F Insert Term. Block Left
HARTING eCatalogue	<a href="https://b2b.harting.com/09210404702">https://b2b.harting.com/09210404702</a>

### Identification

Category	Inserts
Series	Han D <sup>®</sup> AV
Element	Terminal block connector
Specification	Left hand version Single contour (SK)

### Version

Termination method	Screw termination
Gender	Female
Size	16 B
Number of contacts	40
PE contact	Yes

### Technical characteristics

Conductor cross-section	0.2 ... 2.5 mm <sup>2</sup>
Electrical data acc. to IEC 61984	10 A 250 V 4 kV 3
Rated current	10 A
Rated voltage	250 V
Rated impulse voltage	4 kV
Pollution degree	3
Rated voltage acc. to UL	600 V
Insulation resistance	≥10 <sup>10</sup> Ω
Contact resistance	≤4 mΩ
Limiting temperature	-40 ... +125 °C
Tightening torque	0.5 Nm
Mating cycles	≥500

### Material properties

Material (insert)	Polycarbonate
-------------------	---------------



Pushing Performance

## Material properties

Colour (insert)	RAL 7032 (pebble grey)
Material (contacts)	Copper alloy
Surface (contacts)	Silver plated
Material flammability class acc. to UL 94	V-0
RoHS	compliant
ELV status	compliant
China RoHS	e
REACH Annex XVII substances	No
REACH ANNEX XIV substances	No
REACH SVHC substances	No

## Specifications and approvals

Specifications	EN 60664-1 IEC 61984
Approvals	DNV GL
UL / CSA	UL 1977 ECBT2.E235076

## Commercial data

Packaging size	1
Net weight	405 g
Country of origin	Germany
Customs tariff number	85366990