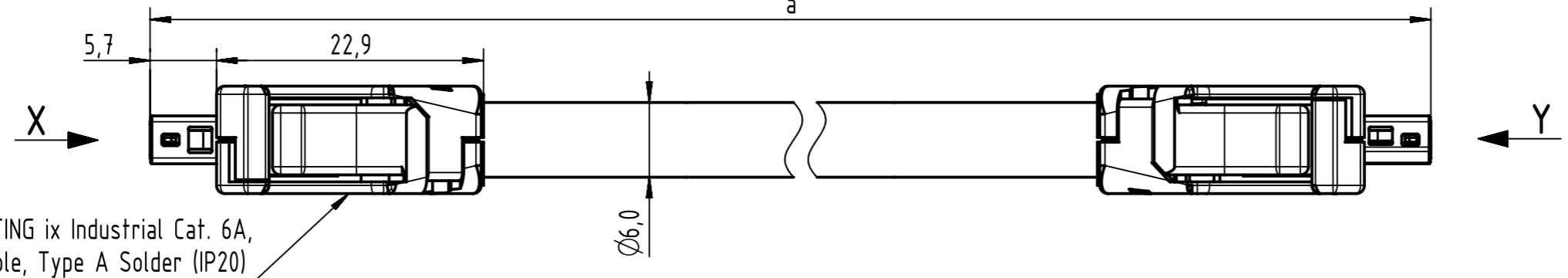
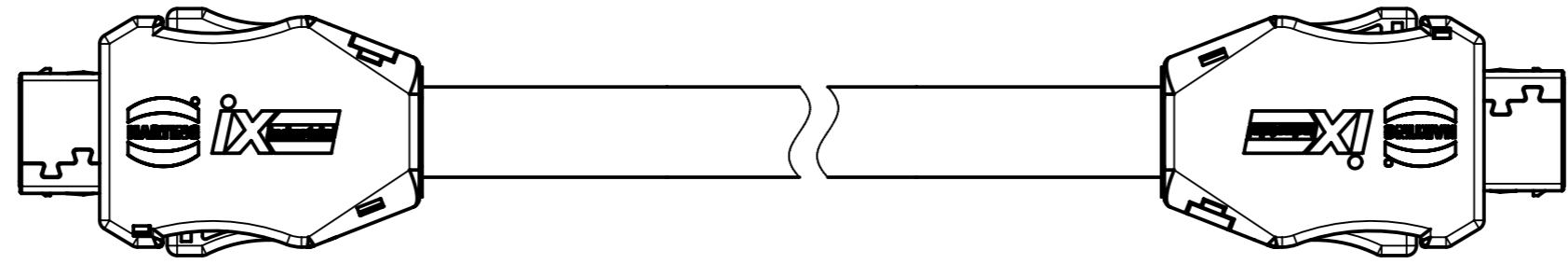


Connector Location A

Connector Location B



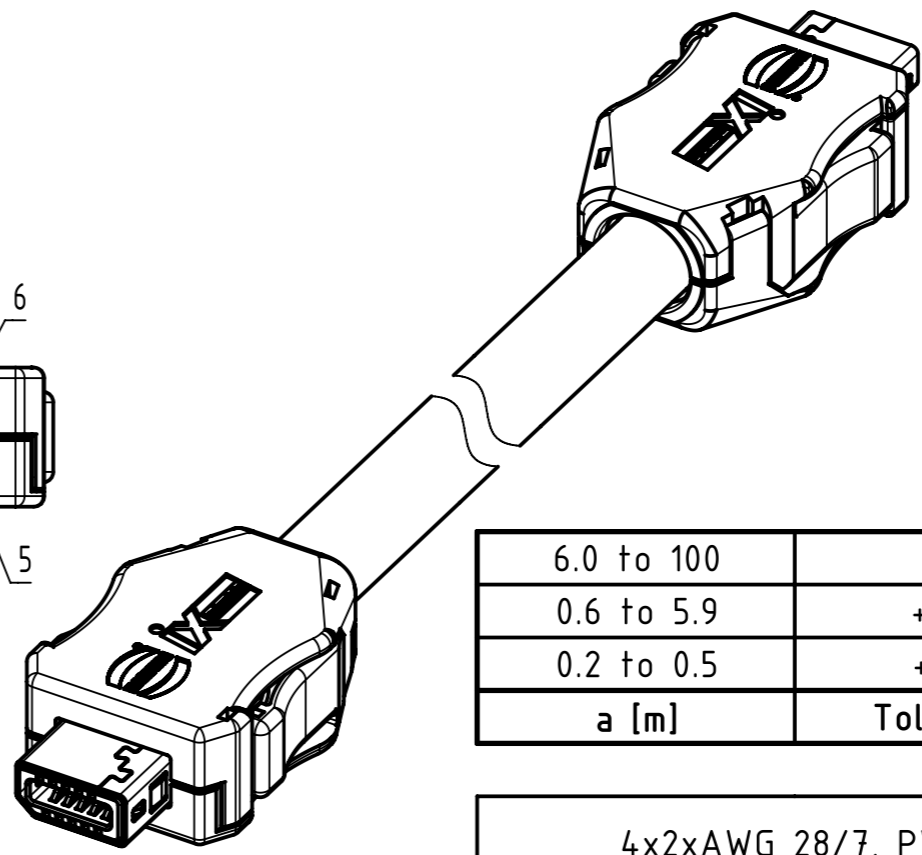
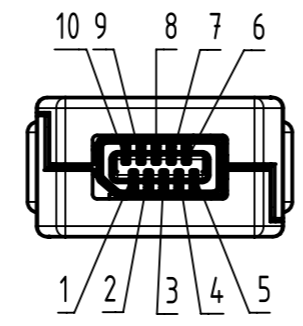
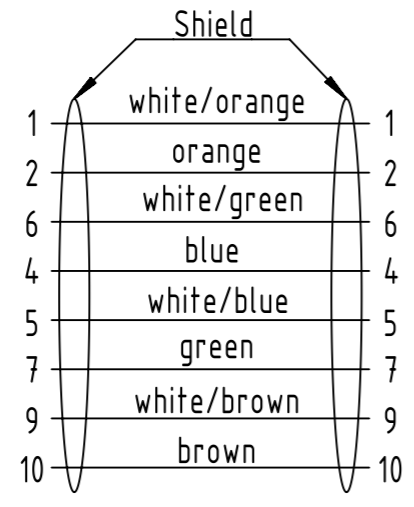
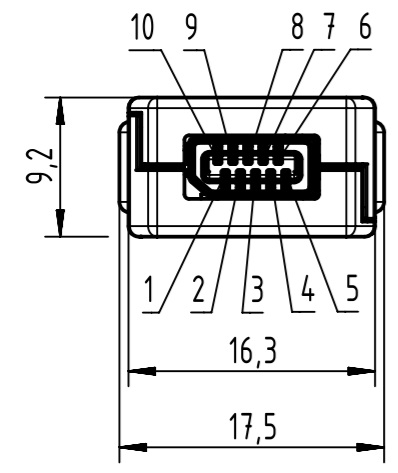
HARTING ix Industrial Cat. 6A,
10-pole, Type A Solder (IP20)



X
male

Loading Plan
acc. to TIA/EIA 568B

Y
male



6.0 to 100	±1%
0.6 to 5.9	+0.04
0.2 to 0.5	+0.02
a [m]	Tolerance

length in "1m" step	100	XXX=000
	99	XXX=990
	.	.
	12	XXX=120
	11	XXX=110
length in "0.1m" step	10	XXX=100
	9.9	XXX=099
	9.8	XXX=098
	.	.
	0.5	XXX=005
	0.4	XXX=004
	0.3	XXX=003
	0.2	XXX=002
Step	a [m]	XXX

Contacts 3 and 8 are not connected on both sides

- Temperature range: -40°C ... +80°C

4x2xAWG 28/7, PVC, Cat. 6A, yellow
Type of cable

09482626749XXX
Part no.

	All rights reserved	Created by 402676 Gross	Inspected by COSTEA Costea	Standardisation MUNTEANV Muntean	Date 2019-10-18	State Final Release	
	Department HCS - RO	Title ix Industrial PVC cable assembly				Doc-Key / ECM-Nr. 100695544/UGD/000/C 500000159464	
HARTING Customised Solutions D-32339 Espelkamp		Type TB	Number 09482626749XXX			Rev. C	Page 1/1