



<b>EAN:</b>	4013288210029	<b>Size:</b>	105x43x25 mm
<b>Part number:</b>	05004571001	<b>Weight:</b>	76 g
<b>Article number:</b>	8790 C Impaktor	<b>Country of origin:</b>	TW
		<b>Customs tariff number:</b>	82042000

- For use with electric or pneumatic powered impact wrenches with 12.5mm = 1/2" drive
- Impaktor technology for above-average service life
- Hexagonal profile enables precise and profile-preserving screwdriving with high power transmission
- With Take it easy tool finder: colour coding by size
- With cross-bore and ring socket for securing locking pin and locking ring of machine-operated tools

Impaktor socket for use with electric or pneumatic impact wrenches with 12.5mm = 1/2" drive. The Impaktor technology ensures above-average service life even under extreme conditions. With Take it easy tool finder with colour coding by size - for easy and fast location of the required tool. With hexagonal profile and grooved socket. The hexagon profile allows the transmission of high forces and puts less strain on the edges of bolts or screw heads than a double hexagon profile. For hexagon headed bolts, screws and nuts.

**Web link**

[https://products.wera.de/en/ratchets\\_and\\_accessories\\_the\\_zyklop\\_ratchets\\_the\\_zyklop\\_ratchets\\_1\\_2\\_zyklop\\_accessories\\_1\\_2\\_8790\\_c\\_impaktor.html](https://products.wera.de/en/ratchets_and_accessories_the_zyklop_ratchets_the_zyklop_ratchets_1_2_zyklop_accessories_1_2_8790_c_impaktor.html)

Wera - 8790 C Impaktor  
05004571001 - 4013288210029

Wera Werkzeuge GmbH  
Korzter Straße 21-25  
D-42349 Wuppertal  
Tel: +49 (0)2 02 / 40 45-0  
E-Mail: [info@wera.de](mailto:info@wera.de)

Zyklop Accessories, 1/2"

For electric or pneumatic impact wrenches



Particularly suitable for use with customary impact drivers



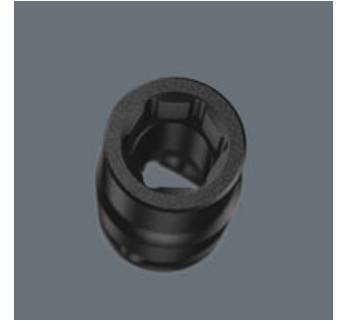
The Impaktor technology ensures above-average service life of the Impaktor socket wrench plug-ins even under extreme conditions.

Cross-bore and ring socket



Due to the groove and the ring socket, the tool can be secured with a locking pin or O-ring on the power tool.

Profile-friendly power transmission



The hexagon profile allows the transmission of high forces and puts less strain on the edges of bolts or screw heads than a double hexagon profile. Fine-toothed ratchets also make the use of a double hexagon profile superfluous, even in confined spaces, thanks to their small return angle.

Take it easy tool finder system



Take it easy tool finder system - with profile and size colour-coding for quick and easy tool selection. Colour-coded system for hexagon drive screws (L-Keys, Zyklop bit sockets), external hex drive screws and nuts (Joker wrenches, Zyklop sockets and Zyklop bit sockets with holding function), and TORX® drive screws (L-Keys, Zyklop bit sockets).




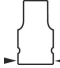
Web link

[https://products.wera.de/en/ratchets\\_and\\_accessories\\_the\\_zyklop\\_ratchets\\_the\\_zyklop\\_ratchets\\_1\\_2\\_zyklop\\_accessories\\_1\\_2\\_8790\\_c\\_impaktor.html](https://products.wera.de/en/ratchets_and_accessories_the_zyklop_ratchets_the_zyklop_ratchets_1_2_zyklop_accessories_1_2_8790_c_impaktor.html)

Wera - 8790 C Impaktor  
05004571001 - 4013288210029

Wera Werkzeuge GmbH  
Korzter Straße 21-25  
D-42349 Wuppertal  
Tel: +49 (0)2 02 / 40 45-0  
E-Mail: [info@wera.de](mailto:info@wera.de)

Further versions in this product family:

	 mm	 mm	 mm	 mm
05004570001	13.0	38.0	21.0	24.0
<b>05004571001</b>	<b>14.0</b>	<b>38.0</b>	<b>22.0</b>	<b>24.0</b>
05004572001	15.0	38.0	24.0	24.0
05004573001	16.0	38.0	24.0	24.0
05004574001	17.0	38.0	26.0	26.0
05004575001	18.0	38.0	28.0	28.0
05004576001	19.0	38.0	28.0	28.0
05004577001	20.0	38.0	26.0	30.0
05004578001	21.0	38.0	26.0	30.0

## Web link

[https://products.wera.de/en/ratchets\\_and\\_accessories\\_the\\_zyklop\\_ratchets\\_the\\_zyklop\\_ratchets\\_1\\_2\\_zyklop\\_accessories\\_1\\_2\\_8790\\_c\\_impaktor.html](https://products.wera.de/en/ratchets_and_accessories_the_zyklop_ratchets_the_zyklop_ratchets_1_2_zyklop_accessories_1_2_8790_c_impaktor.html)

Wera - 8790 C Impaktor  
05004571001 - 4013288210029

Wera Werkzeuge GmbH  
Korzter Straße 21-25  
D-42349 Wuppertal  
Tel: +49 (0)2 02 / 40 45-0  
E-Mail: info@wera.de