

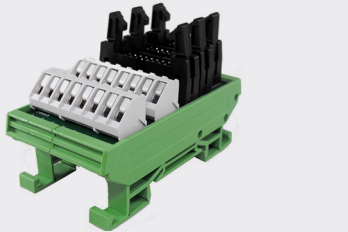
002
PCB TERMINAL
BLOCKS081
TERMINAL STRIPS095
WIRE TO BOARD
CONNECTORS100
CIRCULAR
CONNECTORS151
IP68 CONNECTORS158
INTERFACE
MODULES AND
RELAY BASES

Multiple IDC interface modules

Product overview

- Three IDC dual row headers to screw terminals
- Long ejector latches for strain relief sockets
- 35mm DIN Rail mounting
- Option for 32mm (G) rail mounting
- 45° terminals for easy access
- RoHS compliant
- SVHC free (2012)
- Optional wall mounting plates are available (CIME/M/MPR)

IDCS



SPECIFICATION			
Rating	50V DC 100mA		
Cable entry	0.2-4mm ² (30-12 AWG)		
Terminal screw	M3		
Strip length	6mm (0.24")		
Max terminal torque	0.5Nm (4lb-in)		
Dimensions:	Height	Width	Length
CIM/101416W-IDCS	56mm (2.20")	83mm (3.27")	46mm (1.81")
CIM/202426W-IDCS	56mm (2.20")	83mm (3.27")	80mm (3.15")
CIM/303440W-IDCS	56mm (2.20")	83mm (3.27")	114mm (4.49")
CIM/506064W-IDCS	56mm (2.20")	83mm (3.27")	170mm (6.69")

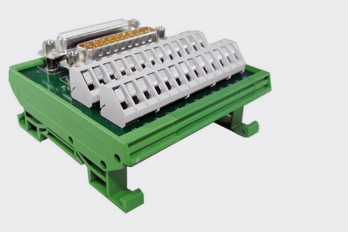
PART NO.	DESCRIPTION
CIM/101416W-IDCS	10, 14 and 16 way IDC to screw terminal interface. 35 mm Din Rail mount
CIM/202426W-IDCS	20, 24 and 26 way IDC to screw terminal interface. 35 mm Din Rail mount
CIM/303440W-IDCS	30, 34 and 40 way IDC to screw terminal interface. 35 mm Din Rail mount
CIM/506064W-IDCS	50, 60 and 64 way IDC to screw terminal interface. 35 mm Din Rail mount

Male and female D-connector interface modules

Product overview

- D Sub male and female to screw terminals
- Terminals marked 1 2 3 etc (+ shield)
- Separate shield connection
- 35mm DIN Rail mounting
- Option for 32mm (G) rail mounting
- 45° terminals for easy access
- RoHS compliant
- SVHC free (2012)
- Optional wall mounting plates are available (CIME/M/MPR)

DMFS



SPECIFICATION			
Rating	50V DC 100mA		
Cable entry	0.2-4mm ² (30-12 AWG)		
Terminal screw	M3		
Strip length	6mm (0.24")		
Max terminal torque	0.5Nm (4lb-in)		
Dimensions:	Height	Width	Length
CIM/9W-DMFS	39mm (1.54")	83mm (3.27")	35mm (1.38")
CIM/15W-DMFS	39mm (1.54")	83mm (3.27")	58mm (2.28")
CIM/25W-DMFS	39mm (1.54")	83mm (3.27")	78mm (3.07")
CIM/37W-DMFS	39mm (1.54")	83mm (3.27")	114mm (4.49")
CIM/50W-DMFS	39mm (1.54")	83mm (3.27")	136mm (5.36")

PART NO.	DESCRIPTION
CIM/9W-DMFS	9 way male and female D Sub screw terminal interface. 35 mm Din Rail mounting
CIM/15W-DMFS	15 way male and female D Sub screw terminal interface. 35 mm Din Rail mounting
CIM/25W-DMFS	25 way male and female D Sub screw terminal interface. 35 mm Din Rail mounting
CIM/37W-DMFS	37 way male and female D Sub screw terminal interface. 35 mm Din Rail mounting
CIM/50W-DMFS	50 way male and female D Sub screw terminal interface. 35 mm Din Rail mounting

ASSOCIATED PRODUCTS

CIME/M/MPR

- Wall mount plates

page 168

