

reducing sleeve

With cooling canal along the location hole

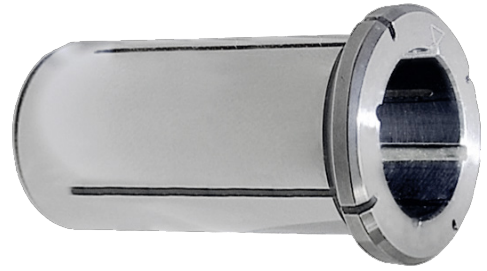
ATORN[®]

Application

For reducing the clamping diameter. For drilling, reaming, milling and tool sharpening.

Version

- Slotted and polished
- Concentricity tolerance $\leq 3\mu\text{m}$
- Concentricity tolerance $\leq 3\mu\text{m}$



Art. No.	23336 620
Chuck clamping diameter	32 mm
Clamping diameter	6 mm
Collar diameter	36 mm
Insertion depth	36 mm
Max. insert depth	60 mm
Length	64 mm
Coolant supply	KKB

EAN-Code

4050293436839