

SERIES 1858 - MINIATURE DOUBLE-POLE ROCKER SWITCHES

TO 10 (4) A 250 V AC 1E4






PRODUCT FEATURES

- ◆ Non-illuminated rocker switch
- ◆ Powerful with inrush currents (capacitive) up to 100 A
- ◆ Immediately self-extinguishing due to UL 94 V-0 material
- ◆ Conformant acc. to EN 60065 par. 14.6

ON REQUEST









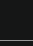





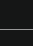

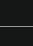

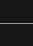

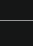


- ◆ Other colors
- ◆ Other printing variants
- ◆ Single-pole assembled
- ◆ Cable assembly

Mechanical life endurance	10E4
Operating force	≤ 5 N
Inrush current (capacitive)	100 A
Contact resistance (new condition)	< 100 mOhm (1 A 12 V DC)
Insulation resistance (new condition)	> 100 MOhm (500 V DC)
Proof tracking	250 PTI
Protection type	IP 40
Ambient temperature	terminal side -20 °C ... +100 °C actuating side -20 °C ... +55 °C
Flammability	UL 94 V-0 UL 94 V-2 (in the versions in white)
Glow wire test temperature	850 °C
Material	actuator PA housing PA terminals silver plated
Plug force of the terminals	≤ 80 N
Approval marks	 /  / 
Suitable for appliances of protection class II	



SERIES 1858 - MINIATURE DOUBLE-POLE ROCKER SWITCHES

TO 10 (4) A 250 V AC 1E4

	Actuator color / printing	Housing color	10 (4) A 250 V AC 1E4	6 (4) A 250 V AC 5E4	12 A 250 V AC 1/2 HP	12 A 125 V AC 1/3 HP	Terminal type	Terminal description	Contact distance in mm	Contact material	EN 60335 cap. 30 conform "G"	Miscellaneous	Stock version
ON / OFF switch (DPST)													
1858.0103			●	●	●	●			≥ 3	Ag	●		●
1858.0104			●	●	●	●			≥ 3	Ag	●		
1858.1102			●	●	●	●		4.8	≥ 3	Ag	●		●
1858.1103			●	●	●	●		4.8	≥ 3	Ag	●		●
1858.1104			●	●	●	●		4.8	≥ 3	Ag	●		
1858.1105			●	●	●	●		4.8	≥ 3	Ag		terminal spacing 10	
1858.2202			●	●	●	●			≥ 3	Ag	●		●
1858.2204			●	●	●	●			≥ 3	Ag	●		
1858.4202			●	●	●	●			≥ 3	Ag	●		●
1858.4205			●	●	●	●			≥ 3	Ag	●		●
1858.9202			●	●	●	●			≥ 3	Ag	●	single-pole occupied	

Further information under

WWW.MARQUARDT-SWITCHES.COM

SERIES 1858 - MINIATURE DOUBLE-POLE ROCKER SWITCHES

TO 10 (4) A 250 V AC 1E4

ROCKER SWITCHES

PUSHBUTTON SWITCHES

TOGGLE SWITCHES

SLIDE SWITCHES

ROTARY SWITCHES

FOOT SWITCHES

FACT AND KEY SWITCHES

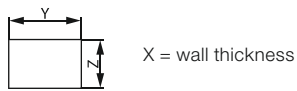
SNAP-ACTION SWITCHES

MICRO-SIGNAL SWITCHES

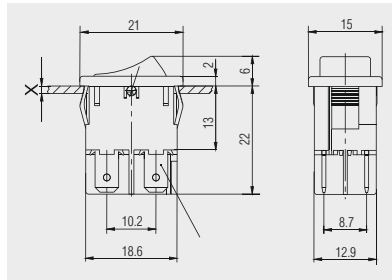
SENSORS



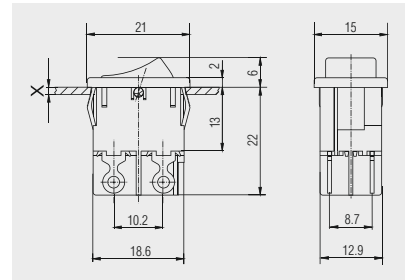
Basic type 1858 double-pole



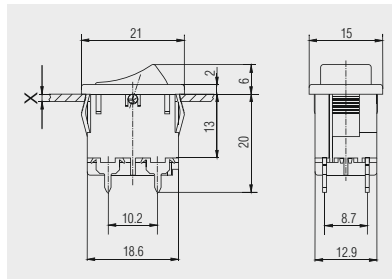
X	Y	Z
0.75 ... 1.25	19.2 ^{-0.1}	12.9 ^{+0.1}
1.25 ... 2	19.4 ^{-0.1}	12.9 ^{+0.1}
2 ... 3	19.8 ^{-0.1}	12.9 ^{+0.1}



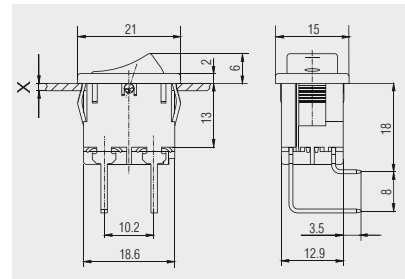
Quick-connect terminal 4.8 x 0.8



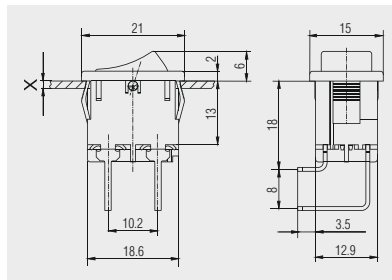
Solder terminal



PCB terminal



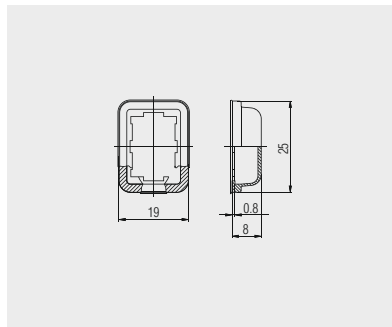
PCB terminal angled to terminal side 1



PCB terminal angled to terminal side 2



Protection cap 203.089.011



Transparent PVC - protection cap. Serves as dust and water protection of the actuation side.