

KEL 24

Cable entry frames



Split inserts

1

Product description

The KEL 24 matches exactly the cut-out dimensions of 24-pole standard industrial connectors.

The split insert matching the cable diameter is placed around the cable and inserted into the cable entry frame.

Either a cut out of 36mm or 46mm tall can be chosen depending on the cables being routed. This flexibility is perfect for pre-terminated cables.

Advantages

- Warranty of pre-terminated cables remains
- Retrofitting and maintenance can be carried out easily and quickly
- High packing density, wide variety of frames and inserts
- Strain relief according DIN EN 50262

Specification

Material	Polyamide
Flame class	UL-94 Vo, self-extinguishing
Protection class	IP 54, with gasket and correct selection of the cable inserts
Temperature	- 40°C to + 140°C (static)
Properties	halogen-free, silicone-free
Cut-out dimensions	36 x 112 mm / page 120 121
Height KEL	17 mm

Accessories

KT Cable inserts	Page 22 26
KEL-SNAP SNAP frames	Page 17
KEL-EMC Cable collector	Page 90 92
KDR2 KDR Base plates	Page 98 103
FP Flanged plates	Page 104 107
MP Module plates	Page 108

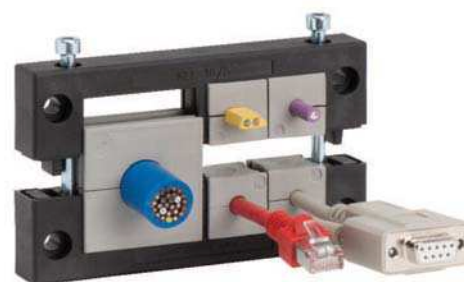
Description	Type	Order No.	Inserts KT small large	PU
	KEL 24 10	42241	10 -	10
	KEL 24 7	42247	6 1	10
	KEL 24 5	42248	5 -	10
	KEL 24 4	42244	2 2	10

KEL 16

Cable entry frames



Split inserts



Type	Order No.	Inserts KT small large	PU	Description
------	-----------	-----------------------------	----	-------------

KEL 16 8	42168	8 -	10	
KEL 16 5	42165	4 1	10	
KEL 16 4	42164	4 -	10	
KEL 16 2	42162	- 2	10	

1

Product description

The KEL 16 matches exactly the cut-out dimensions of 16-pole standard industrial connectors.

The split insert matching the cable diameter is placed around the cable and inserted into the cable entry frame.

Either a cut out of 36mm or 46mm tall can be chosen depending on the cables being routed. This flexibility is perfect for pre-terminated cables.

Advantages

- Warranty of pre-terminated cables remains
- Retrofitting and maintenance can be carried out easily and quickly
- High packing density, wide variety of frames and inserts
- Strain relief according to DIN EN 50262

Specification

Material	Polyamide
Flame class	UL-94 Vo, self-extinguishing
Protection class	IP 54, with gasket and correct selection of the cable inserts
Temperature	- 40°C to + 140°C (static)
Properties	halogen-free, silicone-free
Cut-out dimensions	36 x 86 mm / page 120 121
Height KEL	17 mm

Accessories

KT Cable inserts	Page 22 26
KEL-SNAP SNAP frames	Page 17
KEL-EMC Cable collector	Page 90 92
KDR Base plates	Page 98 103
FP Flanged plates	Page 104 107

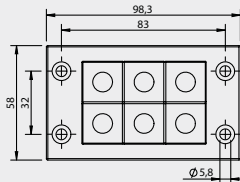
KEL 10

Cable entry frames



Split inserts

Description	Type	Order No.	Inserts KT		PU
			small	large	

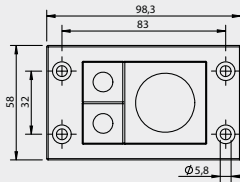


KEL
10 | 6

42216

6 | -

10



KEL
10 | 3

42212

2 | 1

10

1

Product description

The KEL 10 matches exactly the cut-out dimensions of 10-pole standard industrial connectors.

The split insert matching the cable diameter is placed around the cable and inserted into the cable entry frame.

Either a cut out of 36mm or 46mm tall can be chosen depending on the cables being routed. This flexibility is perfect for pre-terminated cables.

Advantages

- Warranty of pre-terminated cables remains
- Retrofitting and maintenance can be carried out easily and quickly
- High packing density, wide variety of frames and inserts
- Strain relief according DIN EN 50262

Specification

Material	Polyamide
Flame class	UL-94 Vo, self-extinguishing
Protection class	IP 54, with gasket and correct selection of the cable inserts
Temperature	- 40°C to + 140°C (static)
Properties	halogen-free, silicone-free
Cut-out dimensions	36 x 65 mm / page 120 121
Height KEL	17 mm

Accessories

KT Cable inserts	Page 22 26
KEL-SNAP SNAP frames	Page 17
KEL-EMC Cable collector	Page 90 92

KEL - B Cable entry frames



Split inserts



Type	Order No.	Inserts KT small large	PU	Description
------	-----------	-----------------------------	----	-------------

KEL - B4	42204	4 -	10	
KEL - B1	42206	- 1	10	

1

Product description

The KEL-B matches exactly the cut-out dimensions of 46 x 46 mm measuring instruments.

The split insert matching the cable diameter is placed around the cable and inserted into the cable entry frame.

For routing cables and conduits up to 34 mm diameter.

Advantages

- Warranty of pre-terminated cables remains
- Retrofitting and maintenance can be carried out easily and quickly
- Space saving shape
- Small cut-out, high packing density
- Strain relief according DIN EN 50262

Specification

Material	Polyamide
Flame class	UL-94 Vo, self-extinguishing
Protection class	IP 54, with gasket and correct selection of the cable inserts
Temperature	- 40°C to + 140°C (static)
Properties	halogen-free, silicone-free
Cut-out dimensions	46 x 46 mm / page 120 121
Height KEL	17 mm

Accessories

KT Cable inserts	Page 22 26
KEL-SNAP SNAP frames	Page 17
KEL-EMC Cable collector	Page 90 92
FP Flanged plates	Page 106 107