



CIRCUIT-BREAKER, 14...20 A, N-RELEASE 260 A, SIZE S0, MOTOR PROTECTION, CLASS 10, SCREW CONNECTION STANDARD BREAKING CAPACITY,

Figure similar

product brand name		SIRIUS
Product designation		circuit breaker
Design of the product		for motor protection

**General technical data:**

<b>Active power loss total typical</b>	W	8
<b>Shock resistance</b>		25g / 11 ms
<b>Surge voltage resistance Rated value</b>	V	6 000
<b>Mechanical service life (switching cycles)</b>		
• of the main contacts typical		100 000
<b>Protection class IP</b>		
• on the front		IP20
<b>Equipment marking</b>		
• acc. to DIN EN 61346-2		Q

**Main circuit:**

<b>Number of poles for main current circuit</b>		3
<b>Adjustable response value current of the current-dependent overload release</b>	A	14 ... 20
<b>Operating voltage</b>		
• Rated value	V	690
• at AC-3 Rated value maximum	V	690
<b>Operating current</b>		
• at AC-3		
— at 400 V Rated value	A	20
<b>Operating power</b>		
• at AC-3		

— at 400 V Rated value	kW	7.5
<b>Operating frequency</b>		
• at AC-3 maximum	1/h	15
<b>Auxiliary circuit:</b>		
<b>Number of CO contacts</b>		
• for auxiliary contacts		0
<b>Product expansion Auxiliary switch</b>		Yes
<b>Protective and monitoring functions:</b>		
<b>Trip class</b>		CLASS 10
<b>Maximum short-circuit current breaking capacity (Icu)</b>		
• with AC at 240 V Rated value	kA	100
• with AC at 400 V Rated value	kA	50
• with AC at 500 V Rated value	kA	10
• with AC at 690 V Rated value	kA	4
<b>Short-circuit:</b>		
<b>Design of the overcurrent release and short-circuit release</b>		thermomagnetic
<b>Installation/ mounting/ dimensions:</b>		
<b>mounting position</b>		any
<b>Mounting type</b>		screw and snap-on mounting onto 35 mm standard mounting rail according to DIN EN 50022
<b>Height</b>	mm	97
<b>Width</b>	mm	45
<b>Depth</b>	mm	96
<b>Required spacing</b>		
• with side-by-side mounting		
— Backwards	mm	0
— at the side	mm	0
<b>Connections/ Terminals:</b>		
<b>Type of electrical connection</b>		
• for main current circuit		screw-type terminals
• for auxiliary and control current circuit		screw-type terminals
<b>Arrangement of electrical connectors for main current circuit</b>		front side
<b>Product function</b>		
• removable terminal for auxiliary and control circuit		No
<b>Type of connectable conductor cross-section</b>		
• for main contacts		
— solid		2x (1 ... 2.5 mm <sup>2</sup> ), 2x (2.5 ... 6 mm <sup>2</sup> )
— stranded		2x (1 ... 2.5 mm <sup>2</sup> ), 2x (2.5 ... 6 mm <sup>2</sup> )

- finely stranded with core end processing
- for AWG conductors for main contacts

2x (1 ... 2.5 mm<sup>2</sup>), 2x (2.5 ... 6 mm<sup>2</sup>)  
2x (14 ... 10)

#### Safety related data:

Protection against electrical shock      finger-safe

#### Mechanical data:

Size of the circuit-breaker      S0

#### Ambient conditions:

Installation altitude at height above sea level maximum      m      2 000


#### Ambient temperature

- during operation      °C      -20 ... +60
- during storage      °C      -50 ... +80
- during transport      °C      -50 ... +80

#### Certificates/ approvals:

General Product Approval	Test Certificates	Shipping Approval
 CCC  CSA  UL  EAC	<a href="#">Special Test Certificate</a>	 ABS

Shipping Approval	other
 BUREAU VERITAS  DNV  GL  Lloyd's Register  RMRS	<a href="#">other</a>

other
<a href="#">Environmental Confirmations</a> <a href="#">Declaration of Conformity</a> <a href="#">Confirmation</a>  VDE

#### Further information

Information- and Downloadcenter (Catalogs, Brochures,...)

<http://www.siemens.com/industrial-controls/catalogs>

Industry Mall (Online ordering system)

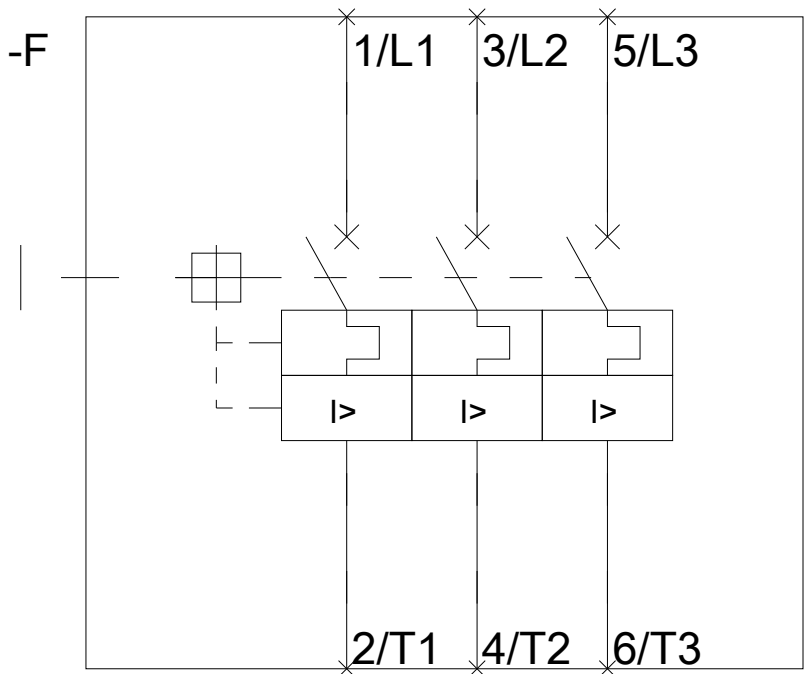
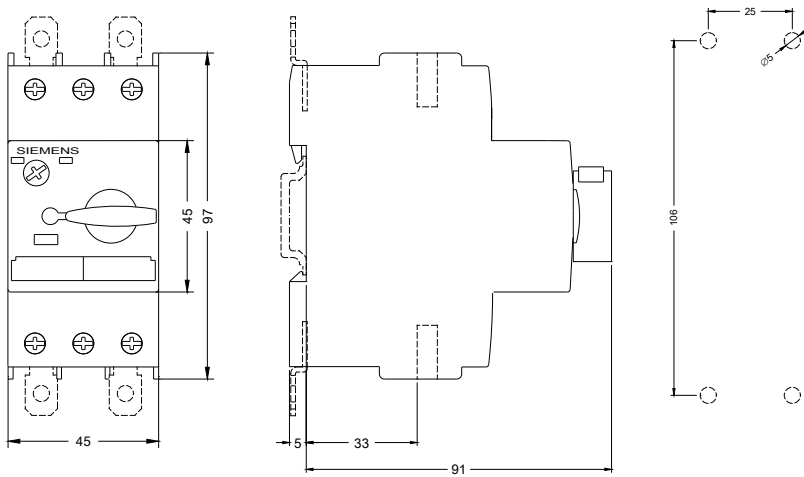
<http://www.siemens.com/industrymall>

Cax online generator

<http://support.automation.siemens.com/WW/CAXorder/default.aspx?lang=en&mlfb=3RV10214BA10>

Service&Support (Manuals, Certificates, Characteristics, FAQs,...)

<http://support.automation.siemens.com/WW/view/en/3RV10214BA10/all>



last modified:

11.03.2015