

## Heavy duty transport castors with perforated plate, PU bandage

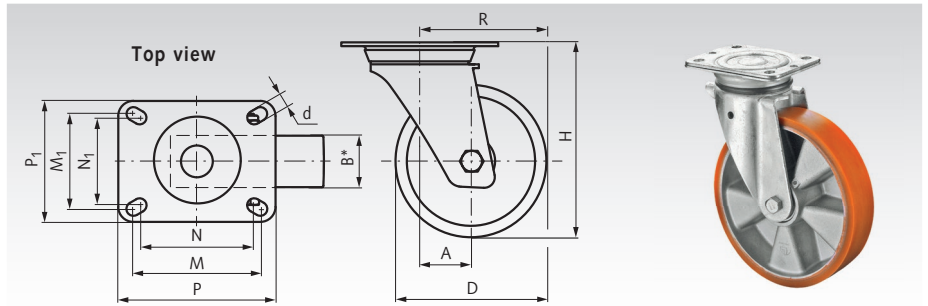
### Swivel castors

**Material:** Fork: sheet steel, zinc-plated.  
Tread: Prothane®,  
Cast polyurethane 95 +/-3° Shore A.  
Wheel body: Aluminium, bolted.  
Wheel bearing: Ball bearing.  
Swivel bearing: Double ball ring.

For indoor and outdoor use. Suitable for high loads. Trackless and abrasion-resistant. Good resistance to oil, grease, petrol and chemicals.

**Temperature range:** -20°C to +70°C.

Ordering Details: e.g.: Product No. 777 610 80H,  
Heavy duty swivel castor, PU, D 80 mm



Product No.	D mm	B mm	H mm	A mm	R mm	d mm	P mm	P <sub>1</sub> mm	M mm	M <sub>1</sub> mm	N mm	N <sub>1</sub> mm	Load capacity kg	Weight kg
777 610 80H	80	40	127	42	82	9	105	85	85	65	75	55	250	1,2
777 611 00H	100	40	137	42	92	9	105	85	85	65	75	55	280	1,4
777 611 25H	125	50	178	46	108,5	11**	138	110	105	75	-	-	450	3,0
777 611 50H	150	50	209	48	123	11**	138	110	105	75	-	-	550	3,3
777 612 00H	200	50	255	52	152	11**	138	110	105	75	-	-	600	3,7

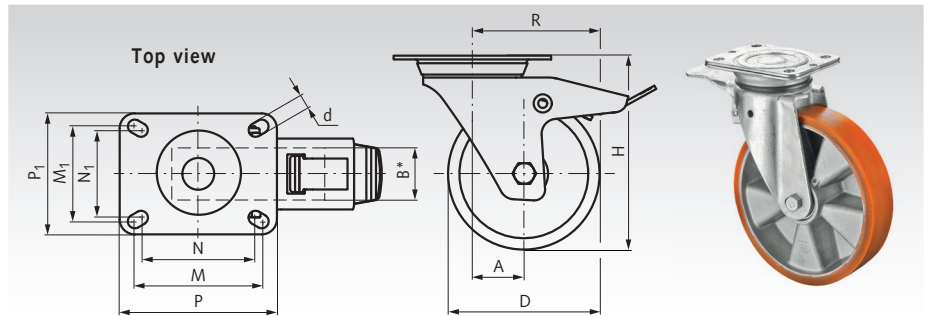
### Swivel castors with brakes

**Material:** Fork: sheet steel, zinc-plated.  
Tread: Prothane®,  
Cast polyurethane 95 +/-3° Shore A.  
Wheel body: Aluminium, bolted.  
Wheel bearing: Ball bearing.  
Swivel bearing: Double ball ring.

For indoor and outdoor use. Suitable for high loads. Trackless and abrasion-resistant. Good resistance to oil, grease, petrol and chemicals.

**Temperature range:** -20°C to +70°C.

Ordering Details: e.g.: Product No. 777 620 80H,  
Heavy duty swivel castor with brake, PU, D 80 mm



Product No.	D mm	B mm	H mm	A mm	R mm	d mm	P mm	P <sub>1</sub> mm	M mm	M <sub>1</sub> mm	N mm	N <sub>1</sub> mm	Load capacity kg	Weight kg
777 620 80H	80	40	127	42	82	9	105	85	85	65	75	55	250	1,6
777 621 00H	100	40	137	42	92	9	105	85	85	65	75	55	280	2,0
777 621 25H	125	50	178	46	108,5	11**	138	110	105	75	-	-	450	3,4
777 621 50H	150	50	209	48	123	11**	138	110	105	75	-	-	550	3,7
777 622 00H	200	50	255	52	152	11**	138	110	105	75	-	-	600	4,1

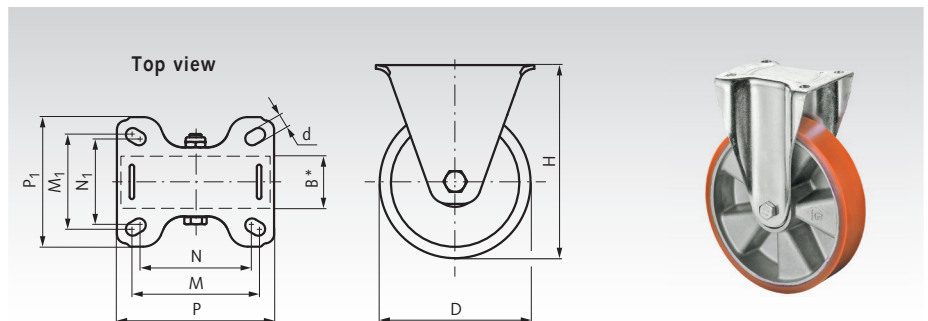
### Fixed castors

**Material:** Fork: sheet steel, zinc-plated.  
Tread: Prothane®,  
Cast polyurethane 95 +/-3° Shore A.  
Wheel body: Aluminium, bolted.  
Wheel bearing: Ball bearing.

For indoor and outdoor use. Suitable for high loads. Trackless and abrasion-resistant. Good resistance to oil, grease, petrol and chemicals.

**Temperature range:** -20°C to +70°C.

Ordering Details: e.g.: Product No. 777 630 80H,  
Heavy duty fixed castor, PU, D 80 mm



Product No.	D mm	B mm	H mm	d mm	P mm	P <sub>1</sub> mm	M mm	M <sub>1</sub> mm	N mm	N <sub>1</sub> mm	Load capacity kg	Weight kg
777 630 80H	80	40	127	9	105	87	83	65	73	52	250	0,9
777 631 00H	100	40	137	9	105	87	83	65	73	52	280	1,2
777 631 25H	125	50	178	11**	135	112	105	75	-	-	450	2,0
777 631 50H	150	50	209	11**	135	112	105	75	-	-	550	2,3
777 632 00H	200	50	255	11**	135	112	105	75	-	-	600	2,7

\* Wheel width \*\* No slotted hole, hole with Ø d.