



CorePro LED PLL



CorePro LED PLL EM/Mains 16.5W 840 4P

Philips CorePro LED PLL is the ideal uplamping solution for downlights & luminaires in a wide range of general lighting applications. It integrates a LED light source into a traditional fluorescent form factor to offer superb energy savings over a lifetime that's twice as long as fluorescent alternatives.

Product data

General Information	
Cap-Base	2G11 [2G11]
Nominal lifetime	30,000 hour(s)
Switching Cycle	200,000
Lighting Technology	LED
Flux measurement reference	Sphere
Light Technical	
Color Code	840 [CCT of 4000K]
Beam Angle (Nom)	160 degree(s)
Luminous Flux	2,100 lumen
Color Designation	Cool White (CW)
Correlated Color Temperature (Nom)	4000 K
Luminous Efficacy (rated) (Nom)	127 lm/W
Color Consistency	<6
Color rendering index (CRI)	80
LLMF At End Of Nominal Lifetime (Nom)	70 %
Operating and Electrical	
Line Frequency	50 to 60 Hz
Input Frequency	50 to 60 Hz
Power Consumption	16.5 W
Lamp Current (Nom)	83 mA

Starting Time (Nom)	0.5 s
Warm-up time to 60% light	0.5 s
Power Factor (Fraction)	0.9
Voltage (Nom)	220-240 V
Temperature	
Ambient temperature range	-20 °C to 45 °C
T-Case Maximum (Nom)	70 °C
Controls and Dimming	
Dimmable	No
Mechanical and Housing	
Bulb Finish	Frosted
Bulb Material	Glass
Product Length	400 mm
Bulb Shape	Tube, single-ended
Approval and Application	
Energy Efficiency Class	E
Energy Saving Product	Yes
Approval Marks	RoHS compliance TUV CE marking KEMA Keur certificate

CorePro LED PLL

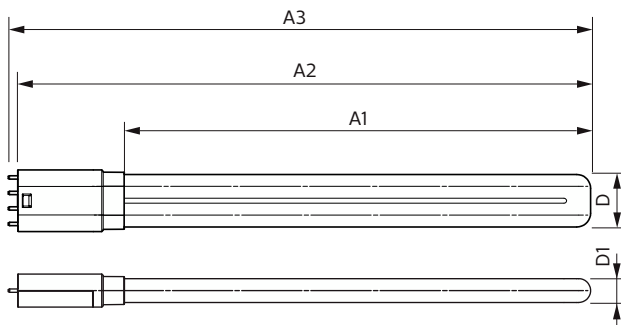
Energy Consumption kWh/1000 h	17 kWh
EPREL Registration Number	1370828
EU RoHS compliant	Yes

Product Data

Full product code	872016915709500
Order product name	CorePro LED PLL EM/Mains 16.5W 840 4P
Order code	929003592702

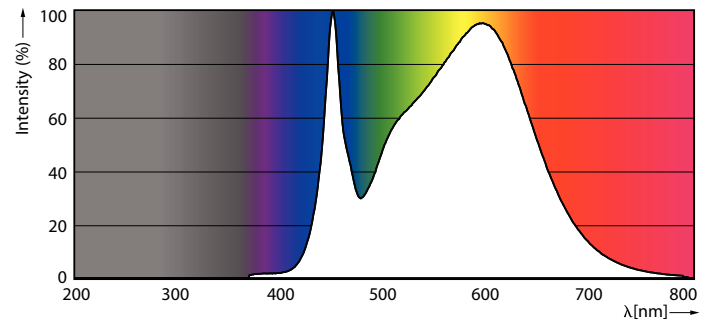
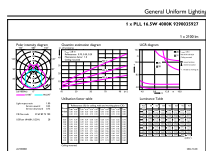
Numerator - Quantity Per Pack	1
Numerator - Packs per outer box	10
Material number (12NC)	929003592702
Full product name	CorePro LED PLL EM/Mains 16.5W 840 4P
EAN/UPC - Case	8720169157101

Dimensional drawing



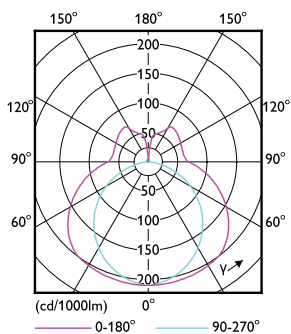
Product	D1	D2	A1	A2	A3
CorePro LED PLL EM/Mains 16.5W 840 4P	17 mm		330 mm	405 mm	412 mm

Photometric data



General uniform lighting - CorePro LED PLL EM/Mains 16.5W 840 4P

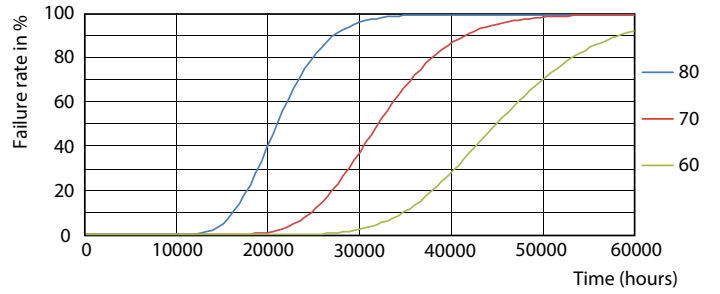
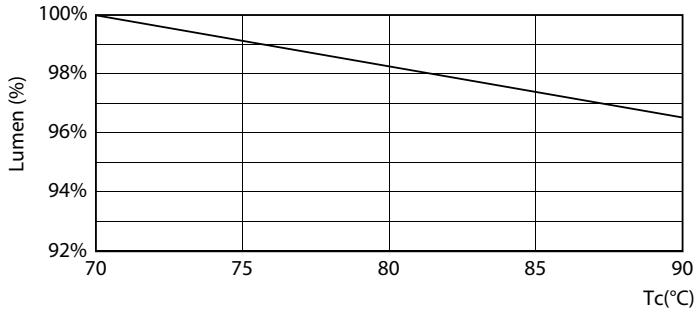
Spectral Power Distribution Colour



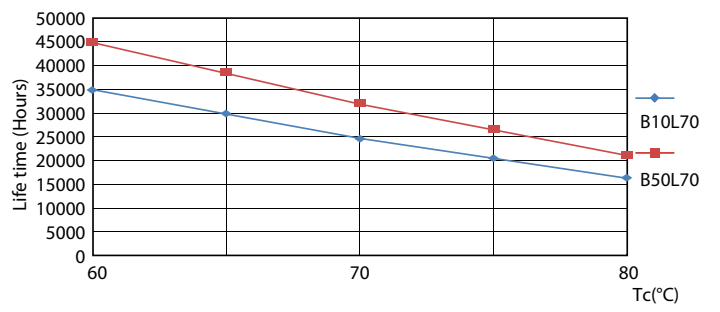
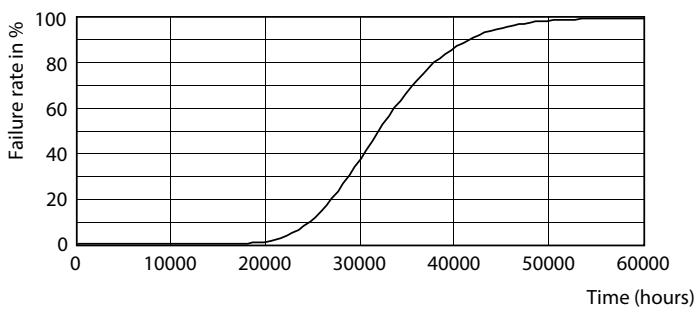
Light Distribution Diagram

CorePro LED PLL

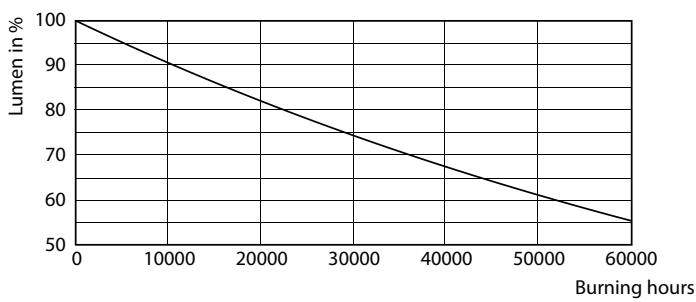
Lifetime



Lumen Maintenance Diagram **Life Expectancy Diagram**



Life Expectancy Diagram - CorePro LED PLL EM/Mains 16.5W 840 4P **Life Expectancy Diagram**



Lumen Maintenance Diagram - CorePro LED PLL EM/Mains 16.5W 840 4P

CorePro LED PLL

