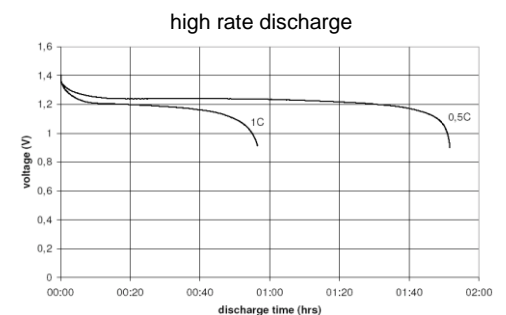
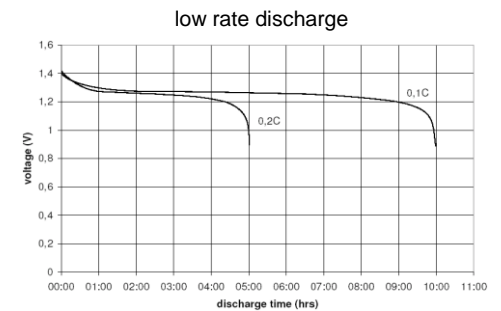
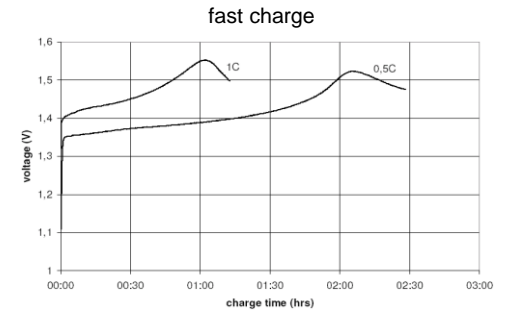
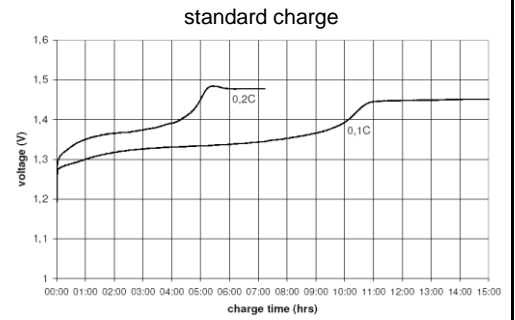


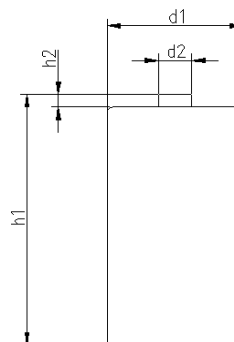
		Conditions	
<b>cell type:</b>	NiMH		
<b>cell size:</b>	D		
<b>nominal voltage:</b>	1.2 V		
<b>max. charge voltage:</b>	1.5 V	at standard charge (0.1C / 20°C)	
<b>capacity</b>			
nominal:	5000 mAh	discharge at 0.2C	
minimum:	5000 mAh	discharge at 0.2C	
	4500 mAh	discharge at 1C	
		1.0V end discharge voltage	
		ta: 20°C	
<b>max. continuous discharge current:</b>	7500 mA	ta: 0...45°C	
<b>charge</b>	current	time	
standard charge:	500 mA	14...16hrs	
quick charge:	1500 mA	4hrs	
fast charge:	2500 mA	2.3hrs	
recommended charge termination control parameters:	0...5 mV	- ΔV (-deltaV)	
	0.8...1 °C	temperature rise per minute	
	45...50 °C	TCO (temperature cut off)	
trickle charge current:	25...150 mA	(recommended)	
continuous overcharge: (less than 1 year)	≤ 500 mA	no conspicuous deformation no leakage	
<b>internal resistance:</b> (impedance)	≤ 30 mΩ	at 1KHz battery fully charged	
<b>life expectancy:</b>	≥ 500 cycles	acc. IEC standard	
<b>self discharge</b>			
charge retention:	≥ 80 %	after 12 months storage at 20°C	
<b>initial capacity:</b>	≥ 3500 mAh	within 30 days after delivery discharge at 0.2C	
<b>ambient temperature range:</b>	0...45 °C	standard charge	
	10...40 °C	fast charge	
	0...45 °C	discharge (≥1C)	
	- 20...65 °C	discharge (<1C)	
	- 20...50 °C	storage (≤3months)	
	- 20...40 °C	storage (≤6months)	
	- 20...30 °C	storage (≤24months)	
<b>QCT1:</b>	20/4750/20		
<b>QCT2:</b>	30/4500/20		

### Diagrams



### mechanical specifications

cell dimensions			
diameter d1:		32.8 - 1.0	mm
diameter d2:	max.	9.5	mm
height h1:		61.5 - 2.0	mm
height h2:	min.	1.5	mm
weight:		115 ± 5	g
blister card dimensions:		123 x 85	mm
blister card weight (incl. batteries):		240	g



	<b>ANSMANN Specifications for model:</b>	<b>D - 5000mAh low self discharge 2pcs blister package</b>
	data sheet no. / part no.	5030922
	supplier no.	702069
	author / date	TG / 16.09.2014