



Figure similar

COUPLING RELAY IM INDUSTRY-STANDARD
 ENCLOSURE 2 CHANGEOVER CONTACTS
 COMBIVOLTAGE 24 V AND 220 V TO 240 V AC/DC
 CAGE CLAMP CONNECTIONS

General technical data:

Type of voltage		AC/DC
Supply voltage frequency		
<ul style="list-style-type: none"> • 1 for auxiliary and control current circuit <ul style="list-style-type: none"> — Rated value 	Hz	50
<ul style="list-style-type: none"> • 2 for auxiliary and control current circuit Rated value 	Hz	60
Control supply voltage 1		
<ul style="list-style-type: none"> • with AC <ul style="list-style-type: none"> — at 50 Hz Rated value — at 50 Hz Initial rated value — at 50 Hz Final rated value — at 60 Hz Rated value — at 60 Hz Initial rated value — at 60 Hz Final rated value • for DC <ul style="list-style-type: none"> — Rated value 	V	24 220 240 24 220 240
Switching behavior		monostable
Product component Plug-in socket		No
Equipment marking acc. to DIN EN 61346-2		K
Equipment marking acc. to DIN 40719 extended according to IEC 204-2 acc. to IEC 750		K

Mechanical data:

Type of electrical connection		spring-loaded terminals
Type of electrical connection Plug-in socket		No

Design of the relay operating mechanism		poled
Design of the switching function positively driven		No
Width	mm	22.5
Height	mm	94
Depth	mm	91




Auxiliary circuit:

Number of NC contacts for auxiliary contacts		0
Number of NO contacts for auxiliary contacts		0
Number of CO contacts for auxiliary contacts		2
Ampacity of the output relay		
<ul style="list-style-type: none"> • at DC-13 <ul style="list-style-type: none"> — at 24 V — at 125 V — at 250 V • at AC-15 at 250 V at 50/60 Hz 	A A A A	1 0.2 0.1 3

Ambient conditions:

Protection class IP		IP20
Ambient temperature during operation minimum	°C	-25
Ambient temperature during operation maximum	°C	60

Certificates/ approvals:

General Product Approval	Test Certificates	other
 CCC	Special Test Certificate	Environmental Confirmations
		other
 UL		

other

[Declaration of Conformity](#)

Further information

Information- and Downloadcenter (Catalogs, Brochures,...)

<http://www.siemens.com/industrial-controls/catalogs>

Industry Mall (Online ordering system)

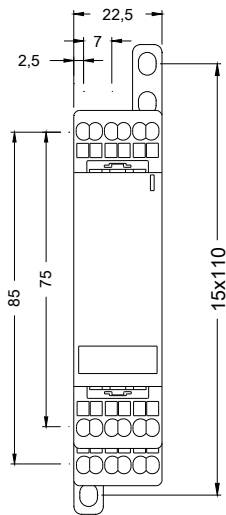
<http://www.siemens.com/industrymall>

Cax online generator

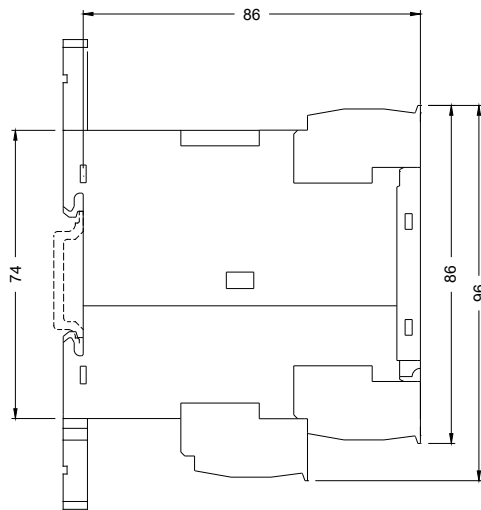
<http://support.automation.siemens.com/WW/CAXorder/default.aspx?lang=en&mlfb=3RS18002BP00>

Service&Support (Manuals, Certificates, Characteristics, FAQs,...)

<http://support.automation.siemens.com/WW/view/en/3RS18002BP00/all>



last modified:



09.03.2015