

CONTACT ORIENTATION ON ROLL

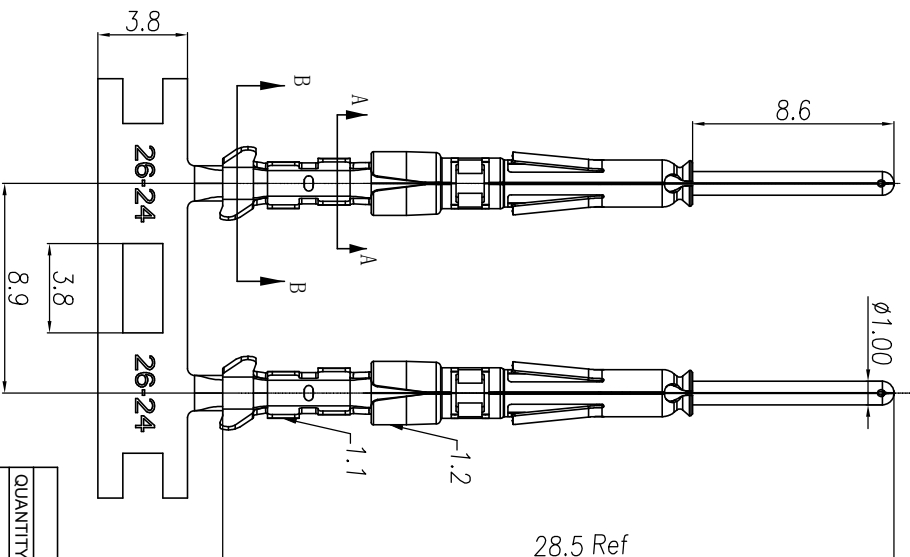
NOTES: (UNLESS OTHERWISE SPECIFIED)

- MATERIAL:
  - CONTACT BODY: COPPER ALLOY.
  - OUTER SPRING: STAINLESS STEEL.
- SPECIFICATIONS:
  - CURRENT RATING: 5A MAX.
  - TERMINATION TYPE: CRIMPING.
  - WIRE RANGE: 26~24AWG.
  - WIRE INSULATION DIA(MAX):  $\varnothing 2.2\text{mm}$ .
- ROHS COMPLIANT.
- ALL DIMENSIONS ARE FOR REFERENCE USE ONLY.
- AVAILABLE TOOLS:
  - HAND CRIMPER: MFX-3958. (A3)
  - CRIMP APPLICATOR: MFX-3957.
  - EXTRACTION TOOL: QXRT20.

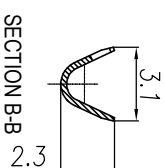
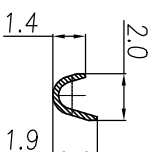
P/N	CONTACT PLATING(MATING AREA)
SP24W2T	TIN PLATING OVER NICKEL.
SP24W2N	NICKEL PLATING OVER COPPERIZE.
SP24W2F	GOLD FLASH PLATING OVER NICKEL.
SP24W2G5	5 $\mu$ " GOLD PLATING OVER NICKEL.
SP24W2G10	10 $\mu$ " GOLD PLATING OVER NICKEL.
SP24W2G15	15 $\mu$ " GOLD PLATING OVER NICKEL.
SP24W2G30	30 $\mu$ " GOLD PLATING OVER NICKEL.

(A2)

REVISIONS					
REV	ECO	DESCRIPTION	DATE	BY	APPR
A1	-	RELEASED DRAWING	Nov-8-17	Rookie Tommy	Tommy
A2	-	ADD THE G5 PART NUMBER	Jan-28-19	Blink Tommy	Tommy
A3	-	CHANGE HAND CRIMPER	Nov-8-19	Flan Tommy	Tommy



SECTION A-A



SECTION B-B

QUANTITY	PART NUMBER	DESCRIPTION	ITEM
		<b>MATERIALS LIST</b>	

UNLESS OTHERWISE SPECIFIED			
1) All dimensions are in millimeters.	DRAWN: <b>Rui</b>	DATE: <b>Nov-8-19</b>	<b>Amphenol</b> Sine Systems - www.amphenol-sine.com 44724 Montey Drive Clinton Township, MI 48038 ECO-MATE PIN CONTACT. STAMPED, 24-28AWG, SIZE 20
2) Tolerances are as follows:	CHECKED: <b>Mih</b>	DATE: <b>Nov-8-19</b>	
1 Pt. DEC 20-08	ENGINEER: <b>Tommy</b>	DATE: <b>Nov-8-19</b>	
3 Pt. DEC 20-08	APPROVE: <b>Tommy</b>	DATE: <b>Nov-8-19</b>	
3) Note reference =	CUSTOMER: <b>Nov-8-19</b>		

PROCESS SPECIFICATIONS		MATERIAL SPECIFICATIONS	
SCALE: NONE	SIZE: B	SCALE: NONE	SIZE: B
SCALE: NONE	TYPE: C-	SCALE: NONE	TYPE: C-
SCALE: NONE	DWG NO: SP24W2XX	SCALE: NONE	DWG NO: SP24W2XX
SCALE: NONE	SHEET: 1 OF 1	SCALE: NONE	SHEET: 1 OF 1
SCALE: NONE	REVISION: A3	SCALE: NONE	REVISION: A3

TITLE: ECO-MATE PIN CONTACT, STAMPED, 24-28AWG, SIZE 20

DWG NO: SP24W2XX

REV: A3

SH: 1 OF 1