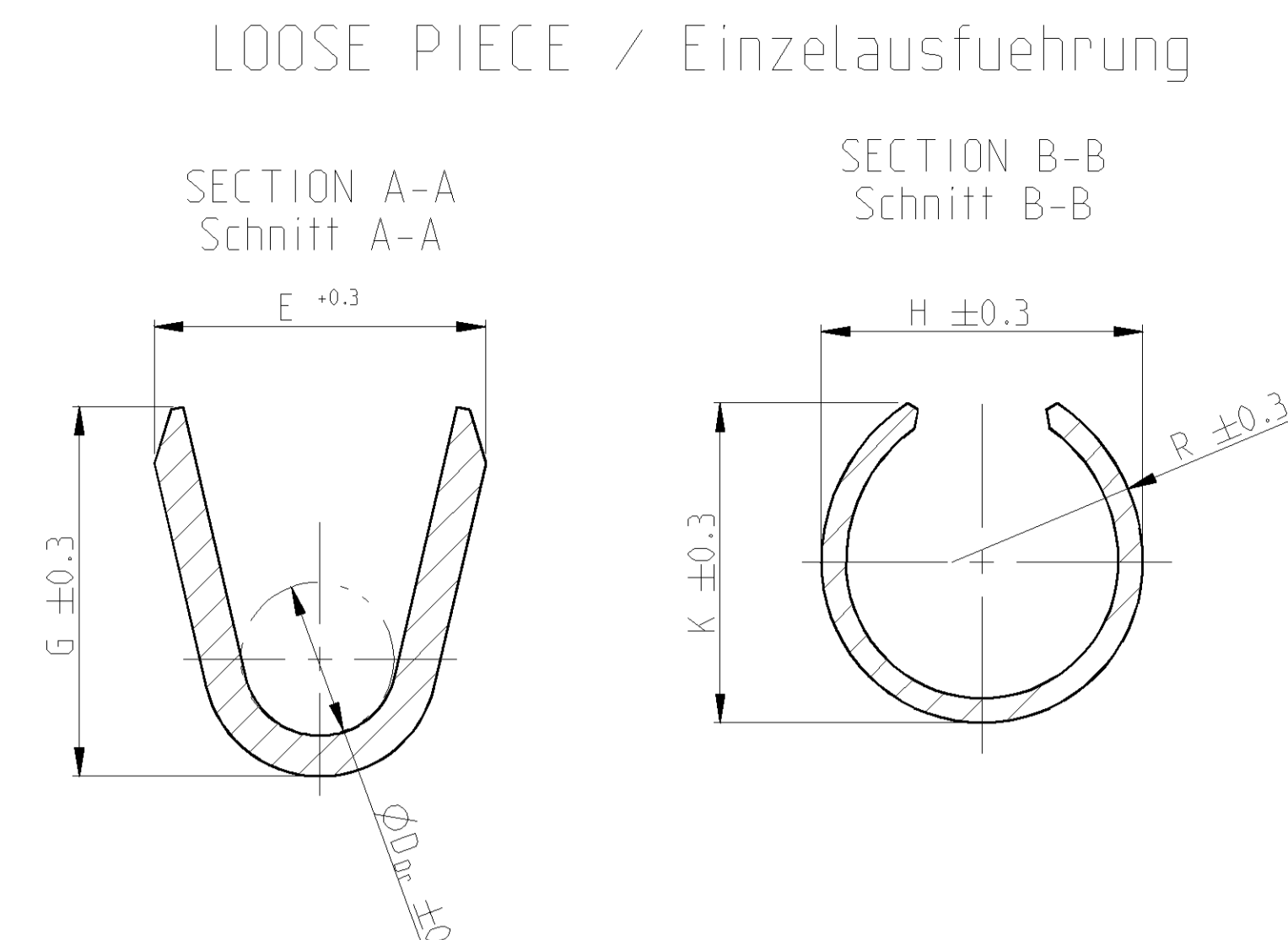
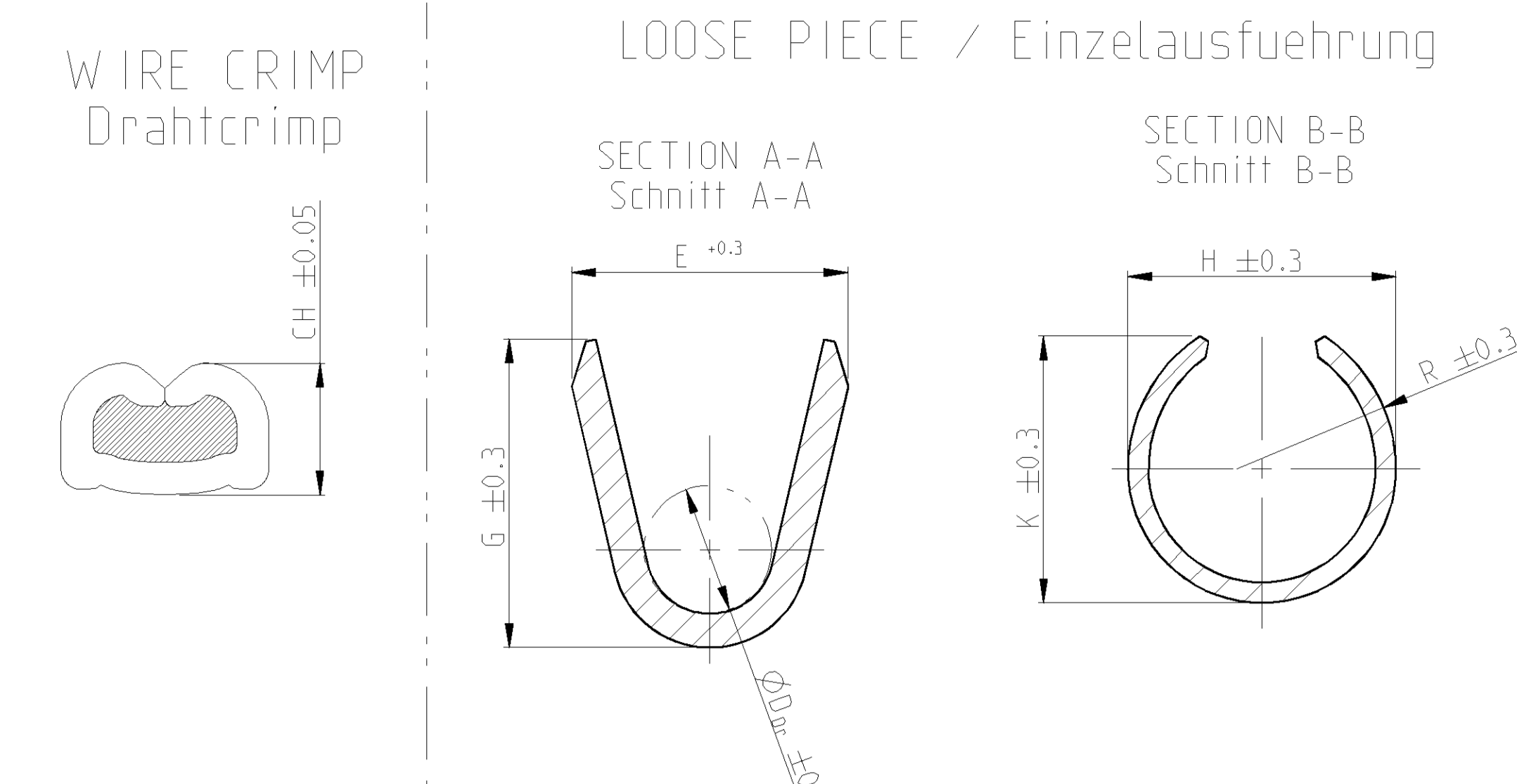
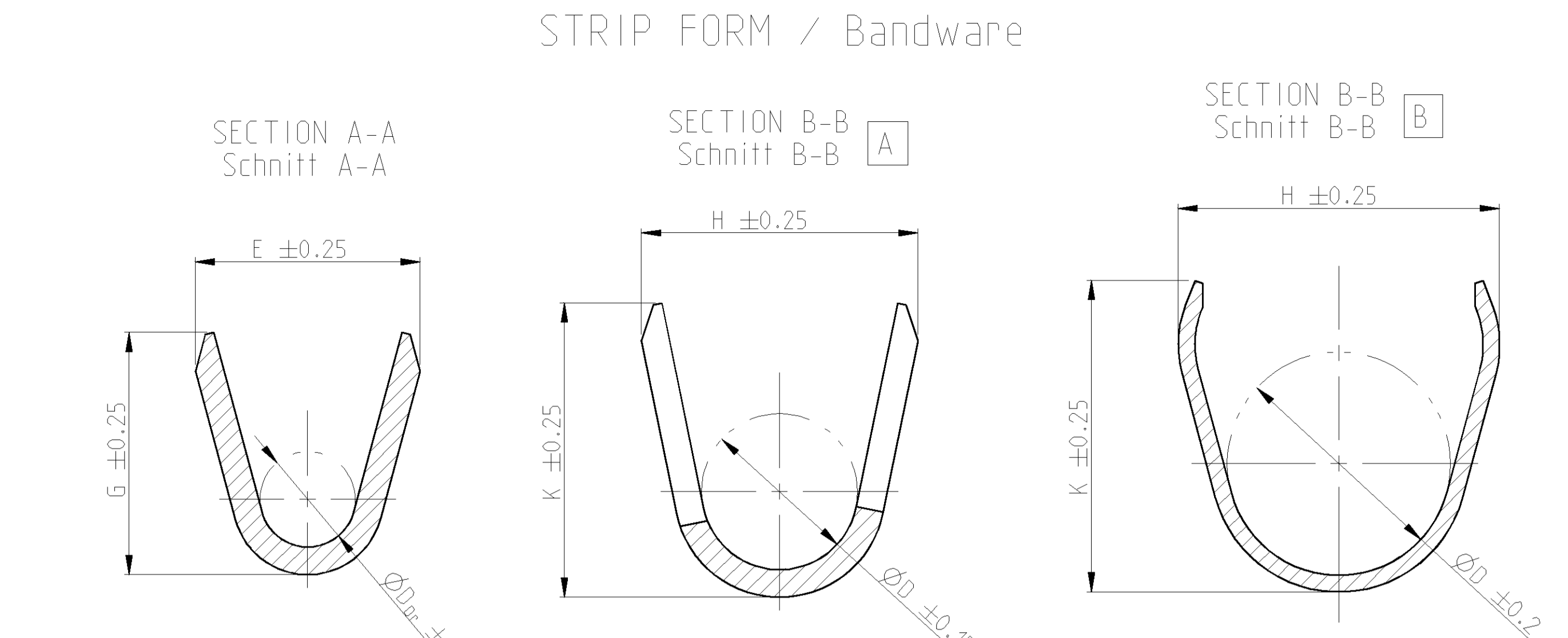
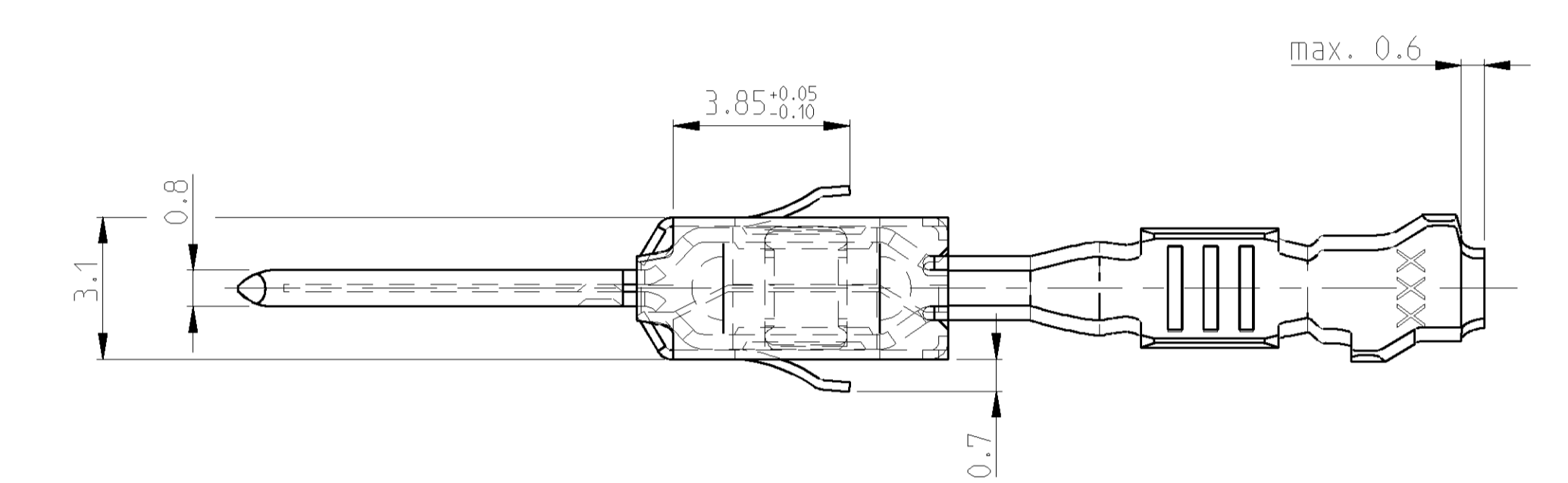
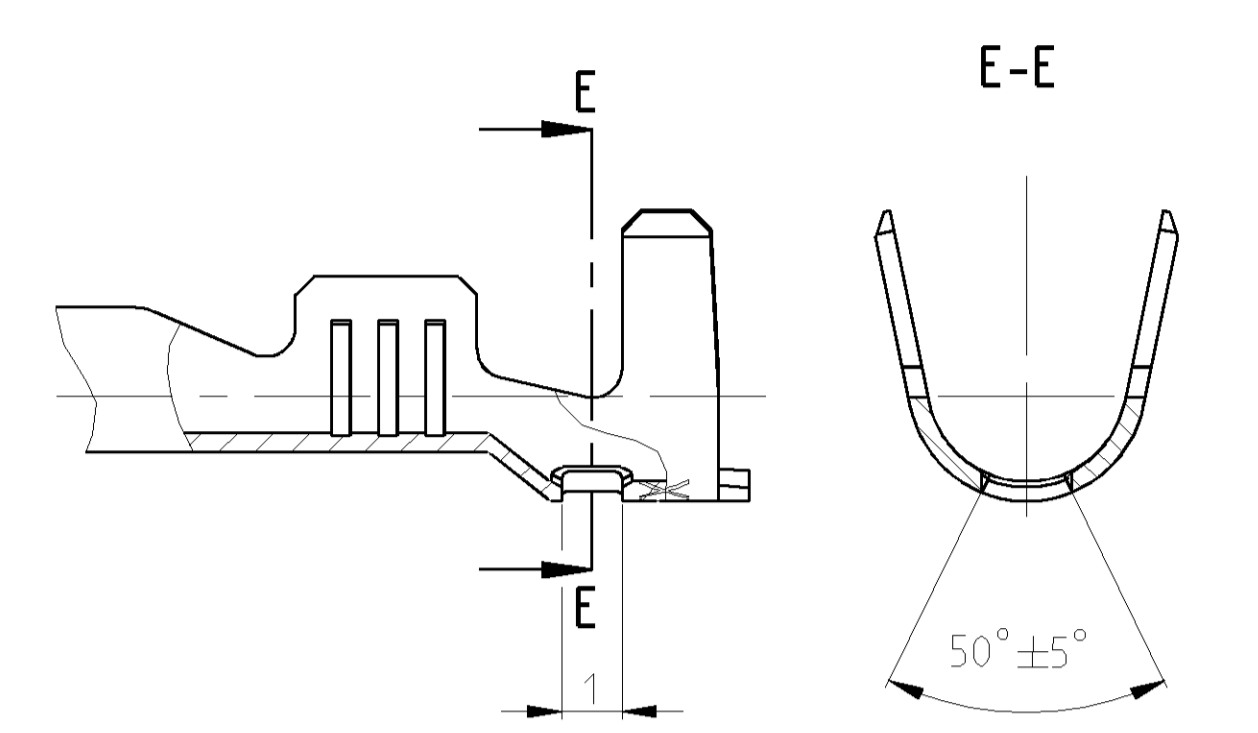
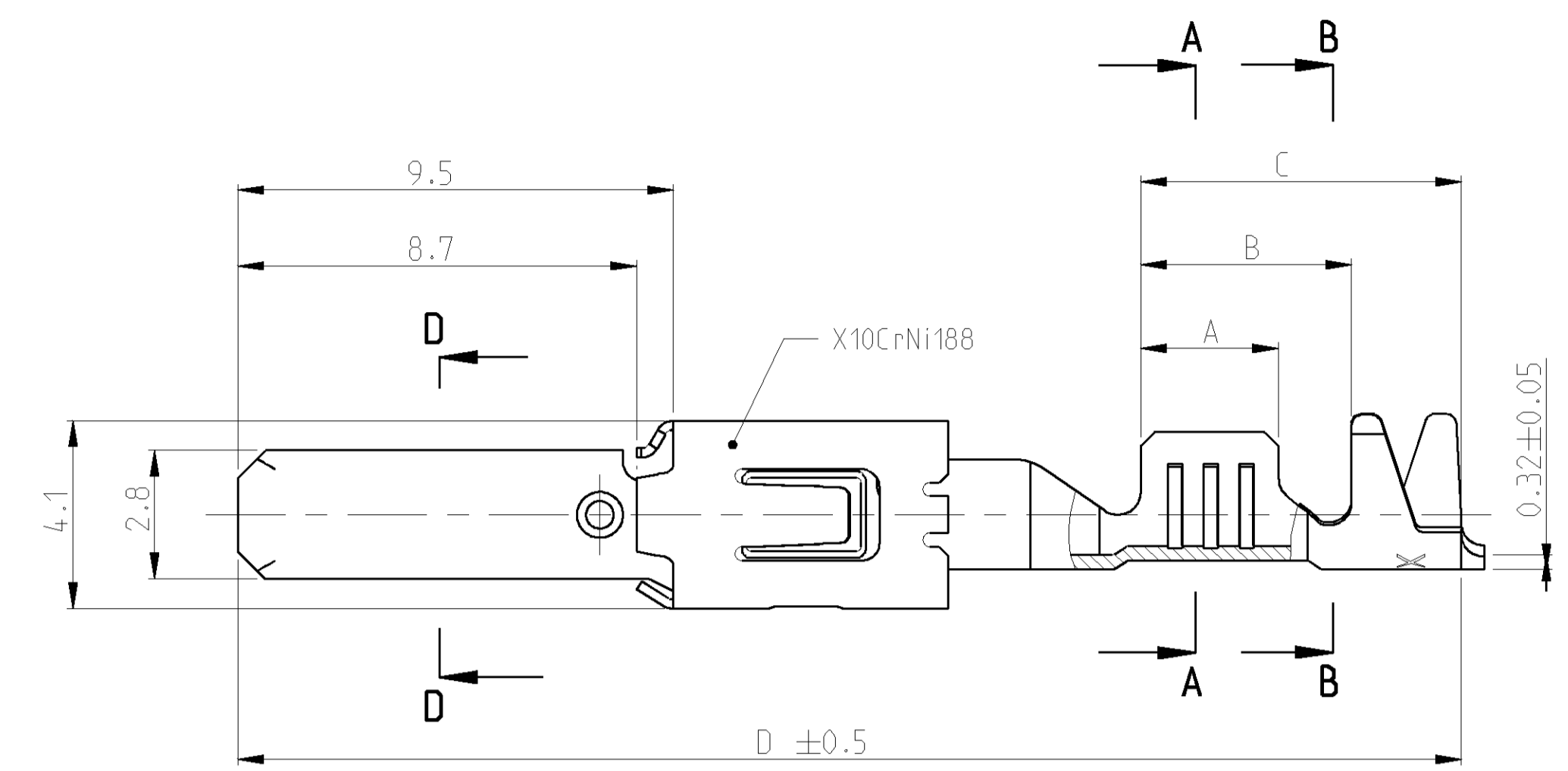


REV	DATE	DESCRIPTION	BY	CHK	APPV
A11	05/01/08	Wrong notes on Table corrected	Arb	Brn	
A12	02/04/09	0.32±0.05 added	Mey	Brn	
A13	30/08/09	Column Sealing plug and Text SINGLE WIRE SEAL ... added	Fru	Brn	
A14	27/03/2010	Wrong dimensions in area B5-6 corrected to H4-6 and K5-9	Krsch	Schtz	



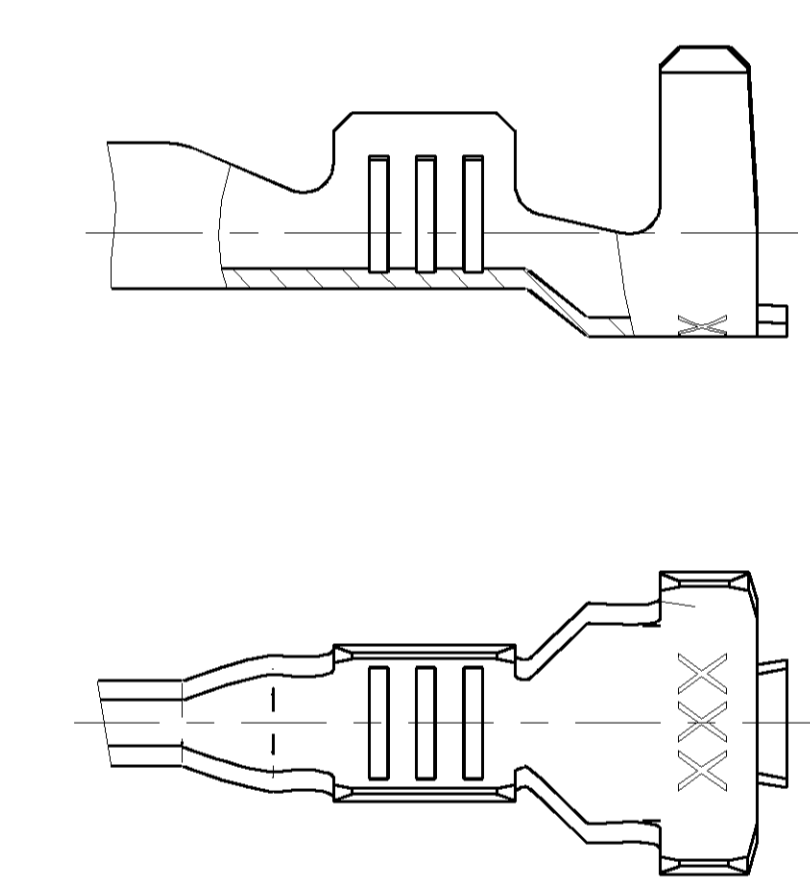
FLR- / FLK - WIRE
 FLR- / FLK - Leitung

SINGLE WIRE SEAL
 Einzeldichtungssystem

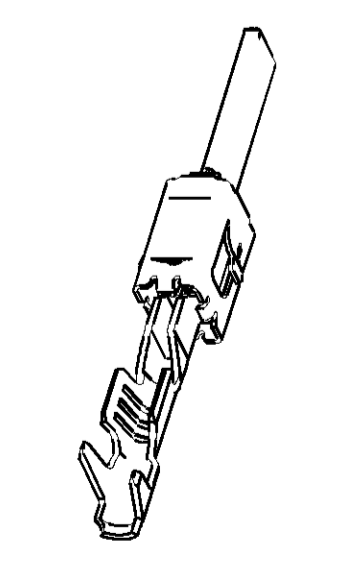


SINGLE WIRE SEAL / Einzeldichtungssystem	PART NO.	REV	MATERIAL	SURFACE	DGB	INSULATION	SEE / siehe SECTION A-A Schnitt A-A	SEE / siehe SECTION B-B Schnitt B-B	SEE / siehe WIRE CRIMP Drahtcrimp	SEE / siehe SECTION A-A Schnitt A-A	SEE / siehe SECTION B-B Schnitt B-B	APPLICATION TOOL	HAND TOOL	TE	TE					
							E	H	G	K	D _{Dr}					D	H	K	R	
12 AWG	1-1719504-2	A	-	△	max. 3.0		E = 4.0 G = 4.2 D _{Dr} = 2.0	H = 5.3 K = 5.0 D = 3.6	AWG 12 = 2.0	-	-	1852291-3	-	3.5	6.0	7.6	26.8	△	828922-1	
	3-968947-1	A	3-968966-1	△	2.5 - 4.0	max. 3.7	E = 4.5 G = 4.7 D _{Dr} = 2.3	H = 6.2 K = 6.0 D = 4.3	4.0 mm ² = 2.25	DIMENSION SEE STRIP FORM		MQC APPLICATOR 2-541537-2	539635-1 MATRIZE : 539727-2	4.3	6.0	8.5	28.5	828985 (Ø6.4)	△	828986-1
	2-968947-2	A	2-968966-2	△						CuSn4	FLR									
	2-968947-1	A	2-968966-1	△	1.0 - 2.5	max. 3.0	E = 3.6 G = 3.8 D _{Dr} = 1.7	H = 5.3 K = 5.0 D = 3.6	2.5 mm ² = 1.88 2.0 mm ² = 1.73 1.5 mm ² = 1.58	E = 2.8	H = 4.8	MQC APPLICATOR 2-878560-2	734440-1	3.5	6.0	7.6	26.8	828905 (Ø5.0)	△	828922-1
	1-968947-2	A	1-968966-2	△						CuFe	FLR									
	2-962916-3	E	2-963749-3	△	0.5 - 1.0	max. 2.1	E = 2.6 G = 2.9 D _{Dr} = 1.2	H = 5.0 K = 4.8 D = 3.3	1.0 mm ² = 1.36 0.75 mm ² = 1.27 0.5 mm ² = 1.18	E = 2.2	H = 4.6	MQC APPLICATOR 2-878559-2	734438-1	3.0	5.4	7.0	26.8	828904 (Ø5.0)	△	828922-1
	1-968947-1	A	1-968966-1	△						CuSn4	FLR									
	2-962916-2	E	2-963749-2	△	0.2 - 0.5	max. 2.1	E = 2.1 G = 2.1 D _{Dr} = 0.8	H = 4.7 K = 4.5 D = 3.2	0.5 mm ² = 1.12 0.35 mm ² = 1.05 0.2 mm ² = 0.98	E = 1.7	H = 4.2	MQC APPLICATOR 2-878558-2	539635-1 MATRIZE : 539737-2	2.5	4.9	6.5	26.8	828904 (Ø5.0)	△	828922-1
	1-968947-1	A	1-968966-1	△						CuSn4	FLK									
	2-962843-3	C	2-963747-3	△	1.0 - 2.5	2.4 - 3.7	E = 3.6 G = 3.8 D _{Dr} = 1.7	H = 5.5 K = 5.7 D = 3.2	2.5 mm ² = 1.88 1.5 mm ² = 1.58	E = 2.8	H = 4.2	MQC APPLICATOR 2-878552-2	734417-3	3.6	5.2	8.9	28.6	△	828922-1	
	2-962843-2	C	2-963747-2	△						CuFe	FLK									
	2-962843-1	C	2-963747-1	△	2.5 - 4.0	2.7 - 3.7	E = 4.5 G = 4.7 D _{Dr} = 2.3	H = 5.7 K = 5.9 D = 3.3	4.0 mm ² = 2.25	E = 3.4	H = 4.6	MQC APPLICATOR 2-541534-2	539635-1 MATRIZE : 539723-2	4.3	6.6	8.5	28.5	△	828922-1	
1-962843-3	C	1-963747-3	△	CuSn4						FLR										
1-962843-2	C	1-963747-2	△	1.0 - 2.5	2.1 - 2.9	E = 3.6 G = 3.8 D _{Dr} = 1.7	H = 4.3 K = 4.5 D = 2.6	2.5 mm ² = 1.88 2.0 mm ² = 1.73 1.5 mm ² = 1.58	E = 2.8	H = 3.6	MQC APPLICATOR 2-878551-2	734417-2	3.6	5.2	8.2	27.9	△	828922-1		
1-962843-1	C	1-963747-1	△						CuSn4	FLR										
3-968946-1	A	3-968965-1	△	0.5 - 1.0	1.4 - 2.1	E = 2.5 G = 2.8 D _{Dr} = 1.1	H = 3.2 K = 3.4 D = 1.8	1.0 mm ² = 1.36 0.75 mm ² = 1.27 0.5 mm ² = 1.18	E = 2.2	H = 2.8	MQC APPLICATOR 2-878550-2	734417-1	3.0	4.6	7.0	26.7	△	828922-1		
2-968946-2	A	2-968965-2	△						CuFe	FLR										
2-968946-1	A	2-968965-1	△	0.2 - 0.5	1.3 - 1.6	E = 2.1 G = 2.1 D _{Dr} = 0.8	H = 2.9 K = 2.9 D = 1.4	0.5 mm ² = 1.12 0.35 mm ² = 1.05 0.2 mm ² = 0.98	E = 1.7	H = 2.5	MQC APPLICATOR 2-878549-2	734538-1	2.5	3.7	5.8	25.5	△	828922-1		
2-968946-2	A	2-968965-2	△						CuSn4	FLR										

DESIGN FOR PN 968946
 Ausfuehrung PN 968946



- NOTES
 Bemerkungen
- △ CONTACT AREA PRE SILVER MIN. 3 µm
 CANTILEVER SPRING PLAIN
 Kontaktzone vorversilbert min. 3 µm
 Ueberfeder blank
 - △ CONTACT BODY NI-PLATING MIN. 0.5 µm; CONTACT AREA PRE-GOLD MIN. 0.6 µm
 OVER NICKEL; CRIMP AREA PRE-TIN
 CANTILEVER SPRING PLAIN
 Kontaktkoerper vernickelt min. 0.5 µm; Kontaktzone vorvergoldet min. 0.6 µm ueber Nickel
 Crimpzone vorverzinkt; Ueberfeder blank
 - △ IN THIS AREA CRACK SHAPING AT THE SURFACE PERMISSIBLE
 In diesem Bereich Rissbildung in der Oberflaeche zulaessig
 - △ PRE-TIN MIN. 1 µm; CANTILEVER SPRING PLAIN
 vorverzinkt min. 1 µm; Ueberfeder blank
 - △ AWG 12 TXL 828905-1 DR / oder 282536-1
 AWG 12 GXL 638865-1
 - △ ATTENTION! CONSTRUCTION OF THE CONTACT CAVITY IN THE AREA OF THE SINGLE WIRE SEAL IS $\phi 6.4^{+0.1}_{-0.05}$
 Achtung! Die Kammer ist im Bereich der Einzeldichtung auf $\phi 6.4^{+0.1}_{-0.05}$ auszuliegen
 - △ PUNCHED WITH VOLATILIZING STAMPING-OIL
 Gestanzt mit verfluechtigendem Stanzoel



TE	TE	MATERIAL	SURFACE	DGB	INSULATION	WIRE CRIMP	WIRE CRIMP	LOOSE PIECE	APPLICATION TOOL	HAND TOOL	TE	TE
ORDER-NO. STRIPFORM Bandware	ORDER-NO. LOOSE PIECE Einzelausfuehrung	Werkstoff	Oberflaeche	mm ²	Isolationsø	WIRE CRIMP Drahtcrimp	WIRE CRIMP Drahtcrimp	LOOSE PIECE Einzelausfuehrung	EXTRACTION TOOL Ausdruckwerkzeug No. 968107-1		TE ORDER-NO. SINGLE WIRE SEAL Einzeldichtungssystem (CAVITY DIAMETER) (Kammerdurchmesser)	TE ORDER-NO. SEALING PLUG Blindstopfen

DATE: 01.01.2010	RELEASED FOR PUBLICATION: 2010	BY: TYP	CHK: B	APPV: B
DIMENSIONS: 1:1		SCALE: 1:1	REV: 1	OF: 1
MATERIAL: -		FINISH: -	WEIGHT: -	VOLUME: -
PRODUCT SPEC: 105-18063		APPLICATION SPEC: 114-18051	SCALE: B-1	SHEET: 1
CUSTOMER DRAWING		SCALE: B-1	SHEET: 1	OF: 1