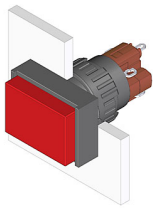


# EAO – Your Expert Partner for Human Machine Interfaces

## 31-121.0252 - Illuminated pushbutton actuator

### 31-121.0252 - Illuminated pushbutton actuator



*Attention: The preview is based on a sample product. This can differ from your current configuration.*

#### Mounting

Mounting cut-out Ø 16 mm  
Design raised

#### Front

Front shape rectangular  
Front dimension 18 mm x 24 mm  
Front bezel colour black  
Front bezel material Plastic

#### Other Attributes

Weight 0,006 kg

#### Operating-/Indication part

Lens illumination illuminative

#### IP-Rating

Front protection IP40

#### Connection Method

Terminal Solder

#### Actuator

Switching action Momentary  
Housing colour black  
Housing material Plastic

#### Switching element

Switching system Snap-action switching element  
Contacts 1 NC + 1 NO  
Switching current 5 A  
Contact material  
Switching voltage 250 V AC

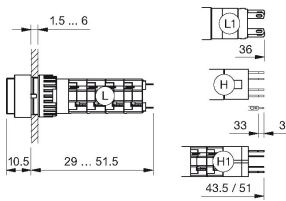
#### Function

Illuminated pushbutton

# EAO – Your Expert Partner for Human Machine Interfaces

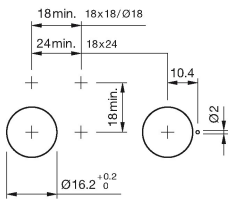
31-121.0252 - Illuminated pushbutton actuator

## Dimensions

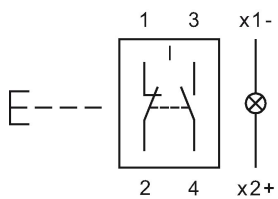


H = Universal terminal 2.0 x 0.5 mm

## Mounting cut-outs



## Wiring diagram



## Legend

Contacts: NC = Normally closed, NO = Normally open  
Switching action: B = Momentary