



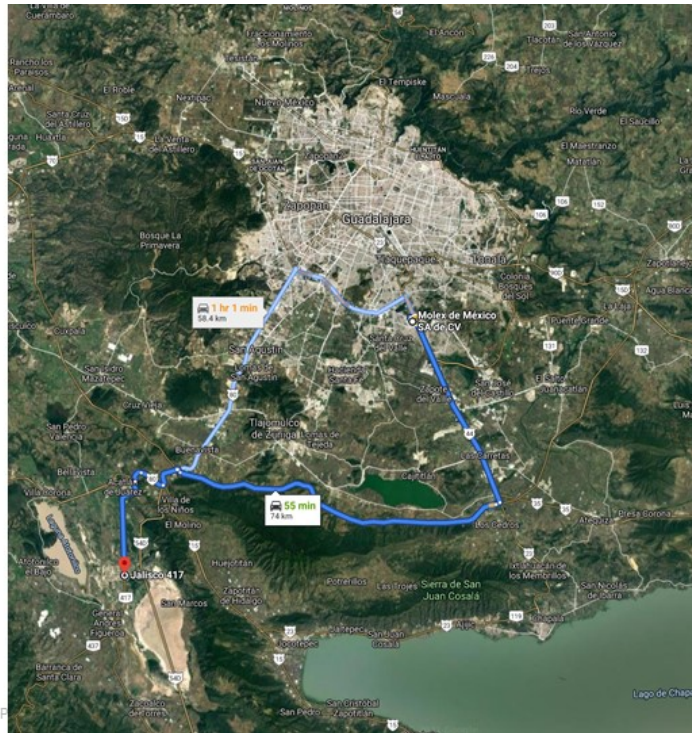
Product Change Notification

Date Issued :	June 15, 2022	PCN Number :	512047
Reason for Change :	Equipment Transfer, Production Transfer or Rearrangement		
Description of Change :	This notification is to inform you about an equipment transfer that has been used to manufacture impacted part(s). Equipment has been moved to different site/ location/ premises. No changes will be made to product as part of this change.		
Assessment of Change :	No change to parts - Form/Fit/Function		
Planned Implementation Date :	December 24, 2022		
Sample Availability Date:	September 16, 2022		
Internal Molex Qualification Date :	September 23, 2022		
Last date to request Samples by Customer :	September 30, 2022		
Traceability Code Markings / Date :	Date code		

Before Picture

Guadalajara 2

- Located in Centro Logistico Jalisco Industrial Park
- 1 hour from existing Guad1
- Initial build will contain Molding, Assembly, and Reliability Testing capabilities
- A new Distribution Center will service Guad2
- Start of Production targeted for Q4 2022



3

Molex /Ford Confidential
© Molex, LLC – All Rights Reserved. Unauthorized Reproduction/Distribution is Prohibited

After Picture

Overview Description of Change

- All these part numbers are Molex proprietary designs, therefore considered catalog/general market product.
- There is no impact to product Fit, Form or Function with these transfers.
- Product validation plans will be approved by the OEMs
- Start of Production is forecasted to begin in 2022.
- Request for Level 3 PPAP must occur one week prior . Submissions will not occur without request.
 - If PPAP is requested, disposition response required within 5 days of submit date or it will be considered approved.
 - If no PPAP is requested by September 30th, 2022, the PPAP will be considered approved.
- In accordance with the requirements established by the certifying bodies, the Guadalajara2 facility will be IATF 16949:2016,ISO14001:2015, ISO45001:2018 certified by Q3 2023. In the meantime, Guadalajara2 will operate following the same Quality Management Systems and rigor that our other certified plants operate within.
- In addition to the new manufacturing facility, we will be working with a third-party logistics provider in Guadalajara. Please discuss logistics options for receiving product with your sales contacts.

2

Molex Confidential Information
© Molex, LLC – All Rights Reserved. Unauthorized Reproduction/Distribution is Prohibited.

molex

RELEASED

You may address inquiries regarding this PCN by clicking on the below link
mailto:pcn_coordinator@molex.com?subject=PCN_Notification:512047
or contact your Local Sales Engineer.

Note: While responding, please retain " PCN Notification : **PCN Notification: 512047** " in the e-mail Subject line for faster response.

[Molex, LLC](#)
2222 Wellington Court
Lisle, IL 60532
TEL (800) 786-6539
www.molex.com