

HEKLA-RZ-LENS

Colour mixing sublens for HEKLA-SOCKETS
and HEKLA-G2 connectors

SPECIFICATION:

Dimensions	Ø 33.6 mm
Height	2.9 mm
Fastening	socket
ROHS compliant	yes ⓘ

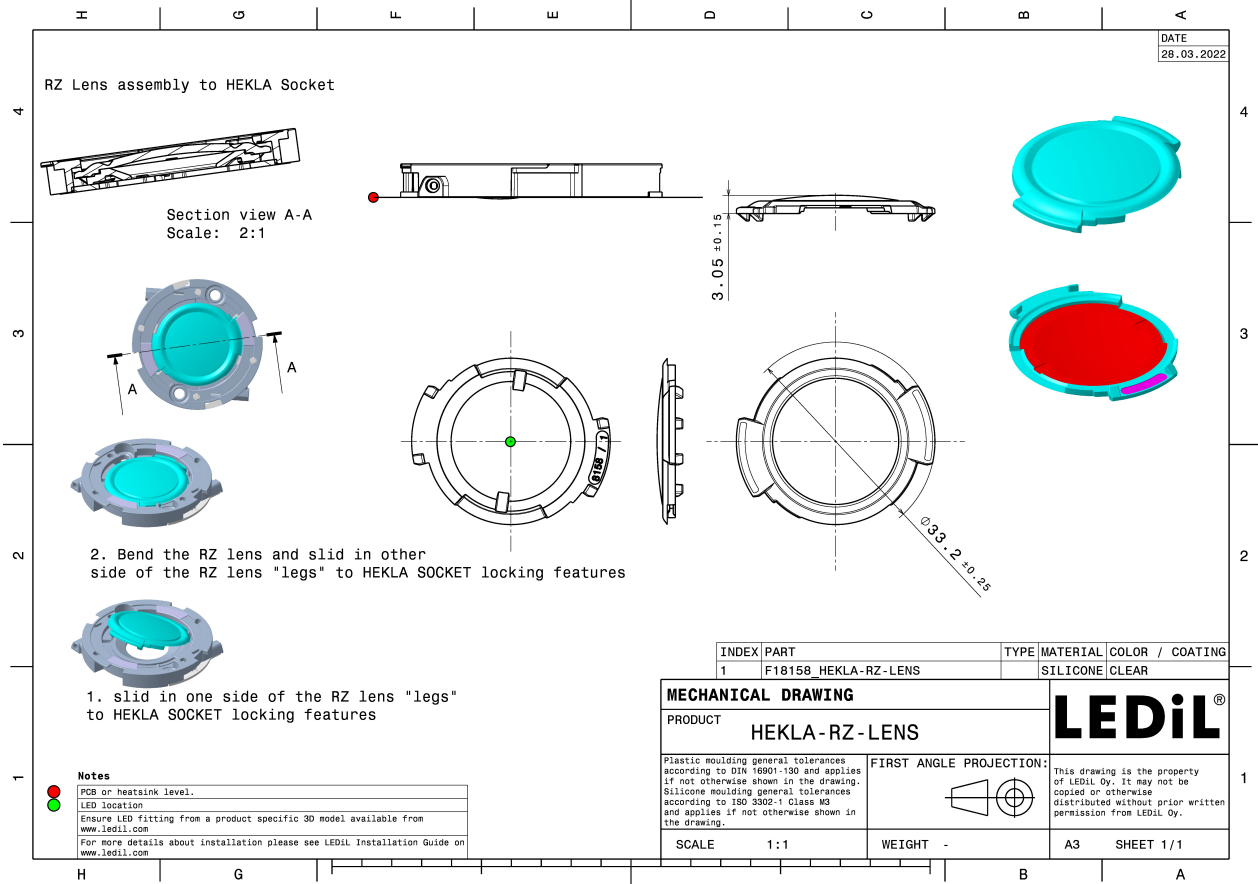
MATERIALS:

Component	Type	Material	Colour	Finish
HEKLA-RZ-LENS	Accessory	Silicone	clear	

ORDERING INFORMATION:

Component	Qty in box	MOQ	MPQ	Box weight (kg)
F18158_HEKLA-RZ-LENS » Box size: 398 x 298 x 140 mm	3150	45	45	2.7





See also our general installation guide: www.ledil.com/installation_guide

AVAILABLE LEDiL PRODUCTS:

Product name	Description
F14988_HEKLA-SOCKET-E	Version compatible with COBs of 15.8 x 15.8 mm packages and max 14.3 mm LES size
FP15072_ZORYA-SC-C	~340° omnidirectional decorative beam. Assembly with HEKLA adapter.
F15253_HEKLA-SOCKET-A	Version compatible with COBs of 12.5 x 12.5 mm packages and max 9 mm LES size
CP17408_YASMEEN-70-S-C	~15° spot beam. Assembly with holder C compatible with LEDiL HEKLA. Black version.
CP17412_YASMEEN-70-M-C	~26° wide beam. Assembly with holder C compatible with LEDiL HEKLA. Black version.
CP17415_YASMEEN-70-W-C	~36° wide beam. Assembly with holder C compatible with LEDiL HEKLA. Black version.
CP17416_YASMEEN-70-WW-C	~60° wide beam. Assembly with holder C compatible with LEDiL HEKLA. Black version.
CP17572_YASMEEN-70-S-C-WHT	~15° spot beam. Assembly with holder C compatible with LEDiL HEKLA. White version.
CP17573_YASMEEN-70-M-C-WHT	~26° spot beam. Assembly with holder C compatible with LEDiL HEKLA. White version.
CP17574_YASMEEN-70-W-C-WHT	~36° wide beam. Assembly with holder C compatible with LEDiL HEKLA. White version.
CP17575_YASMEEN-70-WW-C-WHT	~60° wide beam. Assembly with holder C compatible with LEDiL HEKLA. White version.
CP17690_AMY-50-M-C	~24° medium beam. Assembly with holder C compatible with LEDiL HEKLA. Black version.
CP17691_AMY-50-W-C	~36° wide beam. Assembly with holder C compatible with LEDiL HEKLA. Black version.
CP17692_AMY-50-WW-C	~60° wide beam. Assembly with holder C compatible with LEDiL HEKLA. Black version.
CN17743_YASMEEN-70-ZOOM-C	Infinitely adjustable beam from 15 to 45 degrees. Assembly with holder C compatible with LEDiL HEKLA. Black version.
CP17782_AMY-70-S-C	~18° spot beam. Assembly with holder C compatible with LEDiL HEKLA. Black version.
CP17783_AMY-70-M-C	~24° medium beam. Assembly with holder C compatible with LEDiL HEKLA. Black version.

AVAILABLE LEDiL PRODUCTS:

Product name	Description
CN17949_YASMEEN-70-ZOOM-C-WHT	Infinitely adjustable beam from 16 to 41 degrees. Assembly with holder C compatible with LEDiL HEKLA. White version.
CP18041_AMY-50-S2-C	~15° spot beam with soft cutoff. Assembly with holder C compatible with LEDiL HEKLA. Black version.
CP18442_AMY-50-WAS-C	
CP18492_AMY-70-O-C	~25 + 60° oval beam. Assembly with holder C compatible with LEDiL HEKLA. Black version.
CP18494_AMY-50-O-C	~20 + 50° oval beam. Assembly with holder C compatible with LEDiL HEKLA. Black version.
CP18557_AMY-110-S-C	~18° spot beam. Assembly with holder C compatible with LEDiL HEKLA. Black version.
CP18562_AMY-70-RS-C	~13° spot beam with tight cutoff. Assembly with holder C compatible with LEDiL HEKLA. Black version.
CP18572_AMY-110-M-C	~24° medium beam. Assembly with holder C compatible with LEDiL HEKLA. Black version.
CP18573_AMY-110-W-C	~36° wide beam. Assembly with holder C compatible with LEDiL HEKLA. Black version.
CP18574_AMY-110-WW-C	~60° wide beam. Assembly with holder C compatible with LEDiL HEKLA. Black version.
CN18621_AMY-70-ZOOM-C	Infinitely adjustable beam from 20 to 50 degrees. Assembly with holder C compatible with LEDiL HEKLA. Black version.
CP18643_AMY-50-RS-C	~15° spot beam with tight cutoff. Assembly with holder C compatible with LEDiL HEKLA. Black version.
CN18649_AMY-50-ZOOM-C	Infinitely adjustable beam from 20 to 50 degrees. Assembly with holder C compatible with LEDiL HEKLA. Black version.
CP19028_AMY-110-S-C-WHT	~18° spot beam. Assembly with holder C compatible with LEDiL HEKLA. White version.
CP19030_AMY-110-W-C-WHT	~36° wide beam. Assembly with holder C compatible with LEDiL HEKLA. White version.
CP19031_AMY-110-WW-C-WHT	~60° wide beam. Assembly with holder C compatible with LEDiL HEKLA. White version.

AVAILABLE LEDiL PRODUCTS:

Product name	Description
MBO19199_YASMEEN-70-S	~15° spot beam. Assembly with holder C (LEDiL HEKLA) and B (BJB and B+W). Black and white versions.
MBO19227_YASMEEN-70-WWW	~80° wide beam. Assembly with holder C (LEDiL HEKLA) and B (BJB and B+W). Black and white versions.
MBO19228_YASMEEN-70-RS	~10° spot beam. Assembly with holder C (LEDiL HEKLA) and B (BJB and B+W). Black and white versions.
MBO19229_YASMEEN-70-ZOOM	Infinitely adjustable beam from 15 to 45 degrees. Assembly with holder C (LEDiL HEKLA) and B (BJB and B+W). Black and white versions.
MBO19254_YASMEEN-50-S	~15° spot beam. Assembly with holder C (LEDiL HEKLA) and B (BJB and B+W). Black and white versions.
MBO19255_YASMEEN-50-M	~26° medium beam. Assembly with holder C (LEDiL HEKLA) and B (BJB and B+W). Black and white versions.
MBO19256_YASMEEN-50-W	~36° wide beam. Assembly with holder C (LEDiL HEKLA) and B (BJB and B+W). Black and white versions.
MBO19257_YASMEEN-50-WW	~60° wide beam. Assembly with holder C (LEDiL HEKLA) and B (BJB and B+W). Black and white versions.
MBO19258_YASMEEN-50-ZOOM	Infinitely adjustable beam from 15 to 45 degrees. Assembly with holder C (LEDiL HEKLA) and B (BJB and B+W). Black and white versions.

GENERAL INFORMATION:

NOTE: The typical beam angle will be changed by different color, chip size and chip position tolerance. The typical total beam angle is the full angle measured where the luminous intensity is half of the peak value.

MATERIALS:

As part of our continuous research and improvement processes, and to ensure the best possible quality and availability of our products, LEDiL reserves the right to change material grades without notice.

PRODUCT DATA USER AGREEMENT AND DISCLAIMER:

The measured data in the provided downloadable LEDiL Product Datasheets and Mechanical 2D-Drawings is rounded and provided as reference for planning. LEDiL Oy's optical specifications have been verified by conducting performance testing of the products in accordance with the company's quality system. The reported data are averaged results of multiple measurements with typical variation. LEDiL Oy reserves the right to without prior notification make changes and improvements to its products.

LEDiL Oy assumes neither warranty, nor guarantee nor any other liability of any kind for the contents and correctness of the provided data. The provided data has been generated with highest diligence but the provided data may in reality not represent the complete possible variation range of all intrinsic parameters. Therefore, in certain cases a deviation from the provided data could occur.

LEDiL Oy reserves the right to undertake technical changes of its products without further notification which could lead to changes in the provided data. LEDiL Oy assumes no liability of any kind for the possible deviation from any provided data or any other damage resulting from the usage of the provided data.

The user agrees to this disclaimer and user agreement with the download or usage of the provided files.

LEDiL Oy

Joensuunkatu 13
FI-24240 SALO
Finland

LEDiL Inc.

228 West Page Street
Suite D
Sycamore IL 60178
USA

Ledil Optics Technology (Shenzhen) Co., Ltd.

405 , Block B
Casic Motor Building
Shenzhen 518057
P.R.CHINA

Local sales and technical support

[www.ledil.com/
where_to_buy](http://www.ledil.com/where_to_buy)

Shipping locations

Salo, Finland
Hong Kong, China

Distribution Partners

[www.ledil.com/
where_to_buy](http://www.ledil.com/where_to_buy)