

**battery type:** Lithium - Manganese-Dioxide  
**battery size:** IEC: 6AM6; ANSI: 1604LC; LA522; 9V-Block  
**chemical system:** Li-MnO<sub>2</sub>

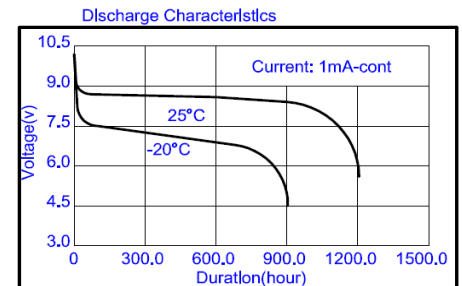
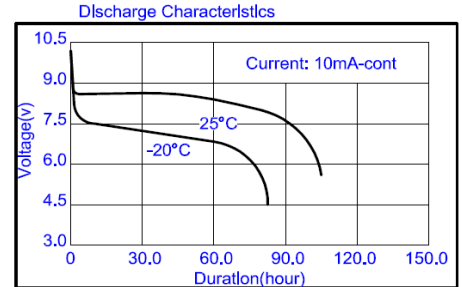
**nominal voltage:** 9 V  
**open circuit voltage:** 9.3...10.2 V new battery  
 9.3...10.2 V after 1 year storage at 20°C

**Conditions**

**capacity rated:** 1100 mAh all measurements at 23°C ambient  
 discharge at 1mA load; 24h/d  
 End Voltage (EV): 5.4V  
 minimum: 950 mAh discharge at 10mA load; 24h/d  
 End Voltage (EV): 5.4V  
 900 mAh discharge at 50mA load; 24h/d  
 End Voltage (EV): 5.4V

**typical service output (new batteries)**

≥ 65 h load resistor: 600Ω; EV: 5.4V  
 discharge 24h/d  
 ≥ 30 h load resistor: 270Ω; EV: 5.4V  
 discharge 1h/d  
 ≥ 70 h load resistor: 620Ω; EV: 5.4V  
 discharge 2h/d



**max. continuous discharge current:** 600 mA

**max. peak discharge current:** 1000 mA

**internal resistance:** ≤ 2 Ω at 1kHz, sine wave measurement according to IEC 896-2

**shelf life:** 10 years under proper storage conditions

**leakage resistance**

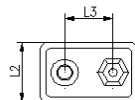
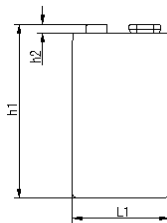
**over discharge:** no leakage  
**high temperature:** no leakage 180ohms continuous discharge for 48h; ta: 20°C; RH: 60±15%  
 store 20days at ta: 60°C; RH:90±5%

**ambient temperature range:** - 40...60 °C

**recommended storage conditions:** -20...30 °C ambient temperature  
 45...75 % rel. humidity

**mechanical specifications**

**cell dimensions**  
 length L1: 26.5 -1 mm  
 length L2: 17.5 -2 mm  
 length L3: 12.7 ± 0.25 mm  
 height h1: 48.5 -2 mm  
 weight: 33 ± 3 g



**carton box**  
 dimensions (L x W x H): 82 x 27 x 51 mm  
 weight (incl. batteries): 185 ± 5 g



	<b>ANSMANN Specifications for model:</b>	<b>Ansmann Lithium Industrial Battery</b>
		<b>9V - E-Block 5pcs box</b>
	data sheet no. / part no.	1505-0002
	supplier no.	703331
	author / date	TG / 02.03.2015