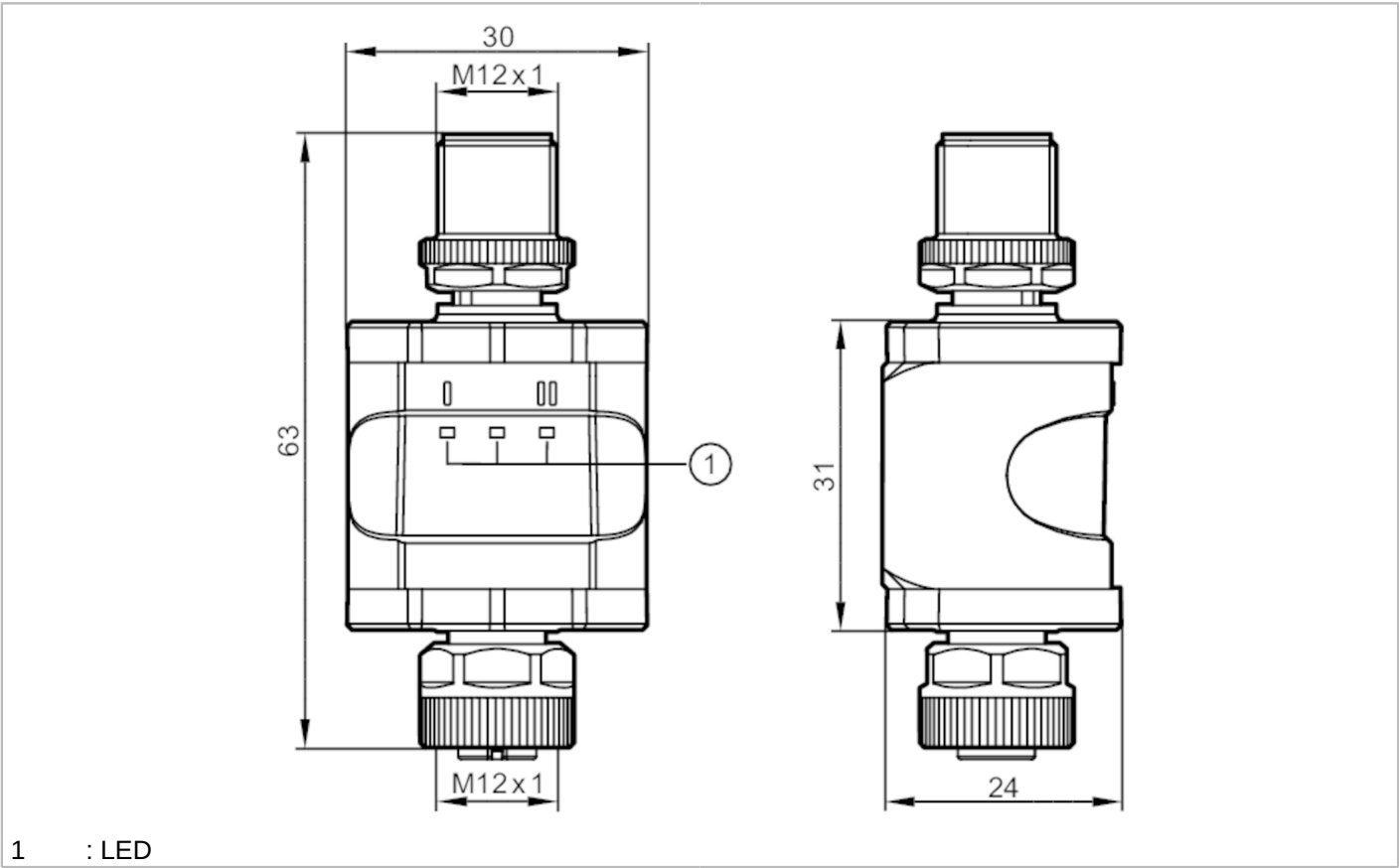


DP1222



Converter 0...10 V - IO-Link

Converter 2x0-10V/IO-Link



Product characteristics	
Number of inputs and outputs	Number of analogue inputs: 2
Electrical data	
Operating voltage [V]	18...30 DC; (to SELV/PELV)
Nominal voltage DC [V]	24
Current consumption [mA]	300
Max. current load total [A]	0.2
Inputs / outputs	
Number of inputs and outputs	Number of analogue inputs: 2
Inputs	
Number of analogue inputs	2
Analogue input (voltage) [V]	0...10



Converter 0...10 V - IO-Link

Converter 2x0-10V/IO-Link

Interfaces	
Communication interface	IO-Link
Transmission type	COM2 (38,4 kBaud)
IO-Link revision	1.1
SDCI standard	IEC 61131-9
IO-Link device ID	613 d / 00 02 65 h
Profiles	Smart Sensor
SIO mode	no
Required master port type	A/B
Process data analogue	2
Min. process cycle time [ms]	3.6

Operating conditions	
Ambient temperature [°C]	-25...70
Storage temperature [°C]	-25...70
Max. relative air humidity [%]	90; (linearly decreasing to 50 % (40 °C) non condensing)
Max. height above sea level [m]	4000
Protection	IP 67
Degree of soiling	2

Mechanical data	
Weight [g]	90.5
Materials	PA: polyamide

Displays / operating elements		
Display	operation	1 x LED, green
	analogue input	2 x LED, yellow

Accessories	
Accessories (optional)	mounting clip

Remarks	
Remarks	For further information please see the operating instructions.
Pack quantity	1 pcs.

Electrical connection - plug

- | | |
|----|-------------|
| 1: | L+ |
| 2: | not used |
| 3: | L- |
| 4: | C/Q IO-Link |





Converter 0...10 V - IO-Link

Converter 2x0-10V/IO-Link

Electrical connection - socket

1:	L+
2:	0...10 V analogue input 2
3:	L-
4:	0...10 V analogue input 1
5:	not used

