

1

2

3

4

5

6

7

A

B

C

D

E

F

G

H

A

B

C

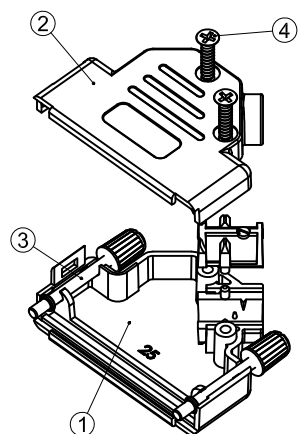
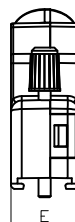
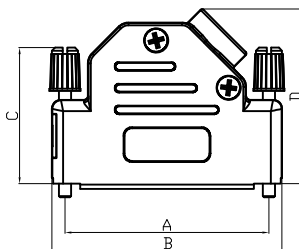
D

E

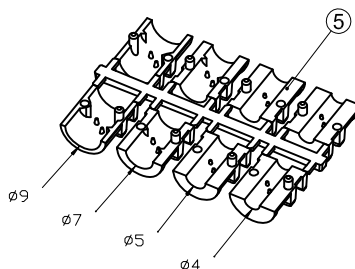
F

G

H



ITEM NO.	DESCRIPTION
1	Cover bottom
2	Cover top
3	Jack screws
4	Screws
5	Strain relief

**Order Code**AMET - XX - RS - 45
1**1 No. of contacts**
09,15,25,37**Black anodized version on request****09-poles only with one knurledge screw available****Delivery Includes**

- 2 half-sheets
- 2 knurledge screws
- 2 screws
- 8 half shells of strain relief

SPECIFICATION**MATERIAL Features****Material and finish**
Zinc-die-cast,nickel plated**Temperature range**
-40° to +120°**Cable diameter**
4.0-13.0mm**Attenuation factor**
>40 dB between
30Mhz and 1Ghz**Requirements**VDE 0871,FCC 20780,
89/336/EU**Dimensions**

No.of contacts	A	B	C	D	E
09	25	31.0	31.3	36.2	14.6
15	33.3	39.3	31.3	40.2	14.6
25	47.0	53.2	31.3	40.2	14.6
37	63.5	69.7	31.3	40.2	14.6

RoHS compliant

Unit: mm

Scale	Free					Date	Name	Customer-No.
TOLERANCE						Drawn	02.07.2007	Hellwig
X.								
X.X		④	Add sheet 2	13.02.2012	Lucas	Approved	13.02.2012	Hellwig
X.XX		③	Change dimension	28.03.2011	Rale			
DIM	TOL	②	Redrawn	28.06.2010	Dean			
X.°								
X.X°		①	Drawn	02.07.2007	Hellwig			
Angle	TOL	Id.	Modification	Date	Name			

Customer-No.

ASSMANN WSW-No.

AMET-xx-RS-45

Drawing-No.

ASS 0411A CO

rev04

Replace

Sheet
1/2

1

2

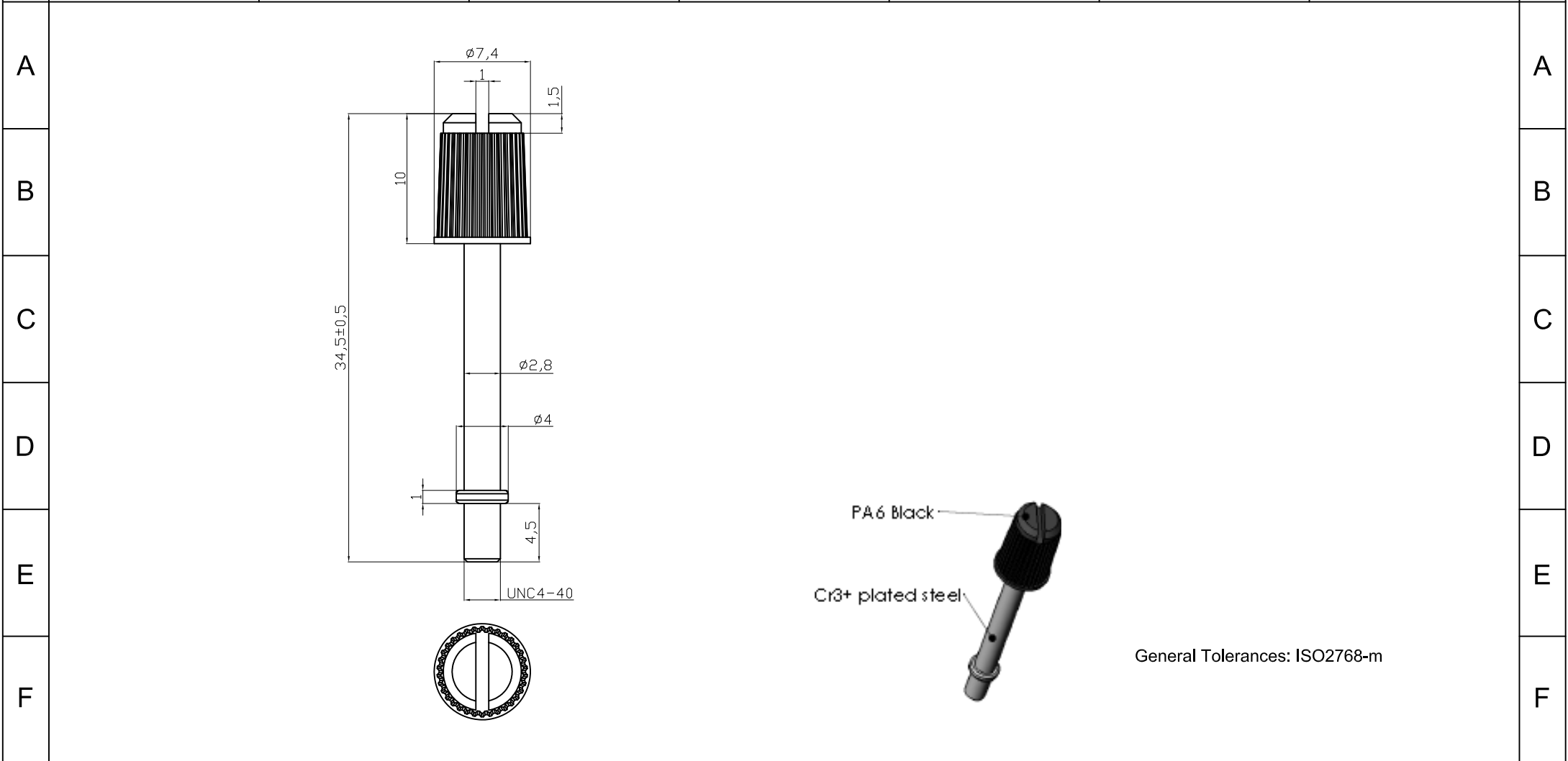
3

4

5

6

7



RoHS compliant
Unit: mm

Scale	Free						Date	Name	Customer-No.
TOLERANCE						Drawn	02.07.2007	Hellwig	ASSMANN WSW-No. AMET-xx-RS-45
X.		④	Add sheet 2	13.02.2012	Lucas	Approved	13.02.2012	Hellwig	
X.X		③	Change dimension	28.03.2011	Rale				
X.XX		②	Redrawn	28.06.2010	Dean				
DIM	TOL	①	Drawn	02.07.2007	Hellwig				Drawing-No.
X.°									ASS 0411A CO
X.X°									Replace
Angle	TOL	Id.	Modification	Date	Name				Sheet 2/2