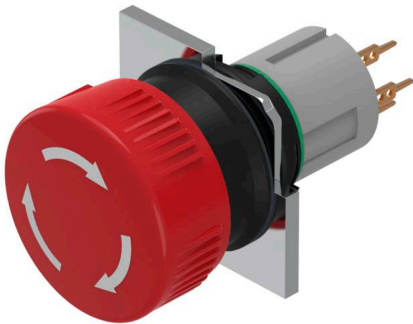


# EAO – Your Expert Partner for Human Machine Interfaces

51-256.026 - Stop switch - Actuator

## 51-256.026 - Stop switch - Actuator



*Attention: The preview is based on a sample product. This can differ from your current configuration.*

### Attribute

Design	raised
Front dimension	Ø 24,5 mm
Front form	round
IP front protection	IP65
Contacts	1 NC
Contact material	Gold
Lens colour	Red
Lens illumination	non illuminative
Lens material	Plastic
Lens optics	opaque
Lens shape	mushroom-head
Switching action	Maintained
Switching system	Low-level element
Switching voltage	42 V
Terminal	Universal terminal
Weight	0.011 kg

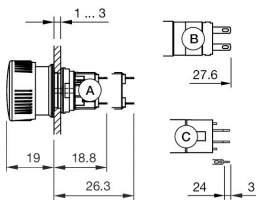
### Function

Stop switch

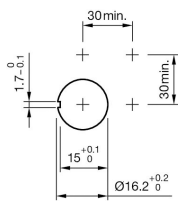
# EAO – Your Expert Partner for Human Machine Interfaces

51-256.026 - Stop switch - Actuator

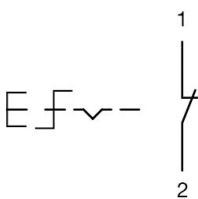
## Dimensions



## Mounting cut-outs



## Wiring diagrams



## Additional information

Marking arrows

Contacts: NC = Normally closed, NO = Normally open

Marking arrows

Contacts: NC = Normally closed