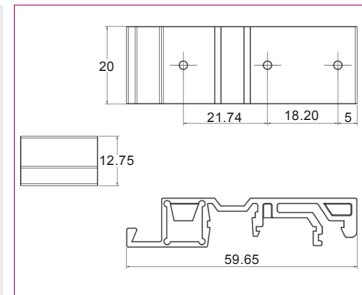
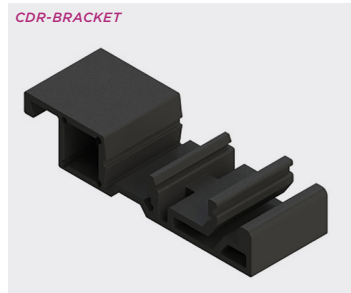


DIN Rail accessories

Din Rail mount bracket

DIN Rail mount bracket enables enclosures to be DIN Rail mounted.

- Screws included allow the DIN Rail mount bracket to be fastened to the enclosures surface
- Two clearance holes will need to be drilled into the enclosure
- The DIN Rail mount bracket is designed for standard top hat 35mm DIN Rail, mini top hat 15mm rail and G section 32mm rail
- For wide enclosures it is recommended to use 2x brackets



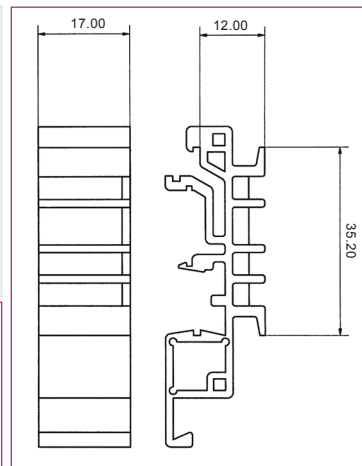
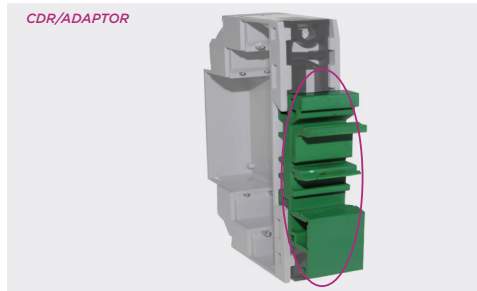
SPECIFICATION

Material	UL94-V0, PA66
Operating temperature	-20°C to +85°C
Colour	Black RAL 9005
Standard unit includes	1x DIN Rail mount bracket, 2x screws

Din Rail adaptor

A one piece adaptor to adapt relay bases and enclosures to G-Rail and mini DIN Rails.

- Snap-fit DIN Rail mounting fixtures
- Moulded in flame retardant UL94-V0
- Symmetrical (35mm)
- Asymmetrical (G-rail)
- Mini symmetrical (15mm)



Mini Top Hat 15mm



G Section 32mm



Standard Top Hat 35mm

