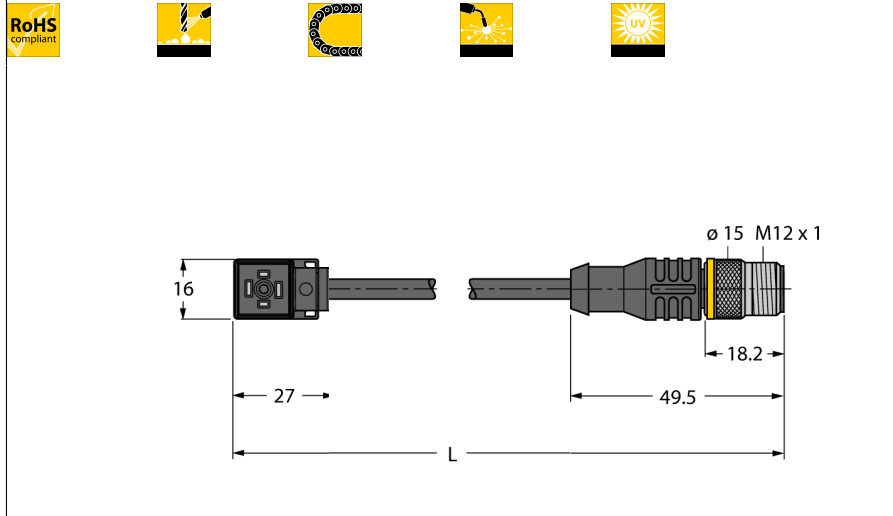


**Valve connector, C**  
**Extension Cable**  
**VC8S22-T80E-2-RSC5.31T/TXL**

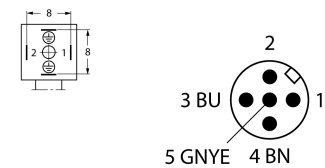


- 2-pin + PE, bridged
- Design according to the DIN EN 175301-803
- RoHS conform
- Protection class: IP67 and IP69K
- Protective component: Z diode
- M12 male, straight, 2-pin + PE
- Sheath material: PUR
- Sheath color: black
- Qualified for drag chain use
- Resistant to weld splatter
- Resistant to chemicals and oils
- UV and ozone resistance
- Flame retardant
- Free from halogen, silicone, PVC and LABS
- Cable length: 2.0 m

**Type designation** VC8S22-T80E-2-RSC5.31T/TXL  
**Ident no.** 6606535

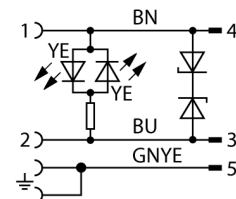
**Connector A side**  
Valve connector, Design C  
Number of pins 2+PE, PE bridged  
Contacts Metal, CuSn, Silver-plated  
Contact carriers Plastic, PA, Black  
Grip Plastic, TPU, Black/Translucent  
Protective component Z diode  
Seal Plastic, TPU  
Protection class IP67, IP69K, (mounted)  
Display switch state LED yellow/yellow  
Mechanical lifespan > 100 Mating cycles  
Pollution degree 3

**Pin Assignment**



**Connector B side**  
Connector, M12 x 1, Straight  
Number of pins 2+PE pins  
Contacts metal, CuZn, Gold-plated  
Contact carriers Plastic, TPU, Black  
Grip Plastic, TPU, Black  
Coupling nut/screw Brass, CuZn, Nickel-plated  
Protection class IP67, IP69K, Only when screwed tight  
Mechanical lifespan > 100 Mating cycles  
Pollution degree 3  
Tightening torque 0.8 ... 1 Nm

**Circuit Diagram**



**General data**  
Cable diameter 5.2 ± 0.20mm  
Cable length 2 m  
Cable quality PUR  
Cable color Black  
Core insulation PP  
Core colors BN, BU, GNYE  
Core cross-section 3x0.34mm<sup>2</sup>  
Arrangement of strands 42x0.1 mm

**Electrical features at +20 °C**  
Current 4 A  
Rated voltage 24 V  
Insulation resistance > 1 MΩ/km  
Test voltage 2000 V  
Forward resistance max. 57 Ω/km

**Valve connector, C**  
**Extension Cable**  
**VC8S22-T80E-2-RSC5.31T/TXL****Mechanical and chemical properties**

---

|                                    |                              |
|------------------------------------|------------------------------|
| Max. tensile strength (static)     | ≤ 50 N/mm <sup>2</sup>       |
| Max. tensile strength (dynamic)    | ≤ 20 N/mm <sup>2</sup>       |
| Bending cycles                     | > 5 mil.                     |
| Bending radius (stationary laying) | > 5 x Ø                      |
| Bending radius (flexible use)      | > 10 x Ø                     |
| Admissible acceleration            | max. 5 m/s <sup>2</sup>      |
| Admissible travel path, horizontal | 5 m (at 5 m/s <sup>2</sup> ) |
| Admissible travel path, vertical   | 2 m (at 5 m/s <sup>2</sup> ) |
| Admissible traversing speed        | 3.3 m/s                      |
| Torsional stress                   | ± 180 °/m                    |
| Ambient temperature                |                              |
| Stationary                         | -50...+80°C                  |
| In motion                          | -30...+90°C                  |
| Drag chain operation               | -25...+60°C                  |