

Directional valves ▶ Pneumatically operated

5/2-directional valve, Series WV02

▶ Flow = 0.5 Cv ▶ pipe connection ▶ compressed air connection output: G 1/8



00108709

Version	Spool valve, zero overlap
Pilot	external
Sealing principle	Soft sealing
Mounting on manifold strip	PRS strip
Working pressure min./max.	See table below
Control pressure min./max.	See table below
Ambient temperature min./max.	+32 °F / +176 °F
Medium temperature min./max.	+32 °F / +176 °F
Medium	Compressed air
Max. particle size	5 μm
Oil content of compressed air	0 mg/m ³ - 5 mg/m ³
Mounting screw	M3

Materials:

Housing	Aluminum, anodized
Seals	Acrylonitrile Butadiene Rubber; Hydrogenated nitrile butadiene rubber
Front plate	Polyamide
Threaded bushing	Aluminum

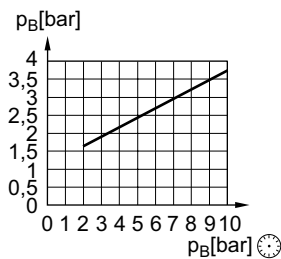
Technical Remarks

- The min. control pressure must be adhered to, since otherwise faulty switching and valve failure may result!
- The pressure dew point must be at least 27 °F under ambient and medium temperature and may not exceed 37 °F.
- The oil content of compressed air must remain constant during the life cycle.
- Use only the approved oils from AVENTICS, see chapter „Technical information“.

	Compressed air connection		Flow rate value [Cv]	Working pressure min./max. [psi]	Control pressure min./max. [psi]	Weight [lbs]	Note	Part No.
	Input	Output						
	G 1/8	G 1/8	0.5	29 / 145	-- / 145	0.1763	1)	0820238001
	G 1/8	G 1/8	0.5	-13 / 145	22 / 145	0.2204	-	0820238002

1) See diagram

Control pressure



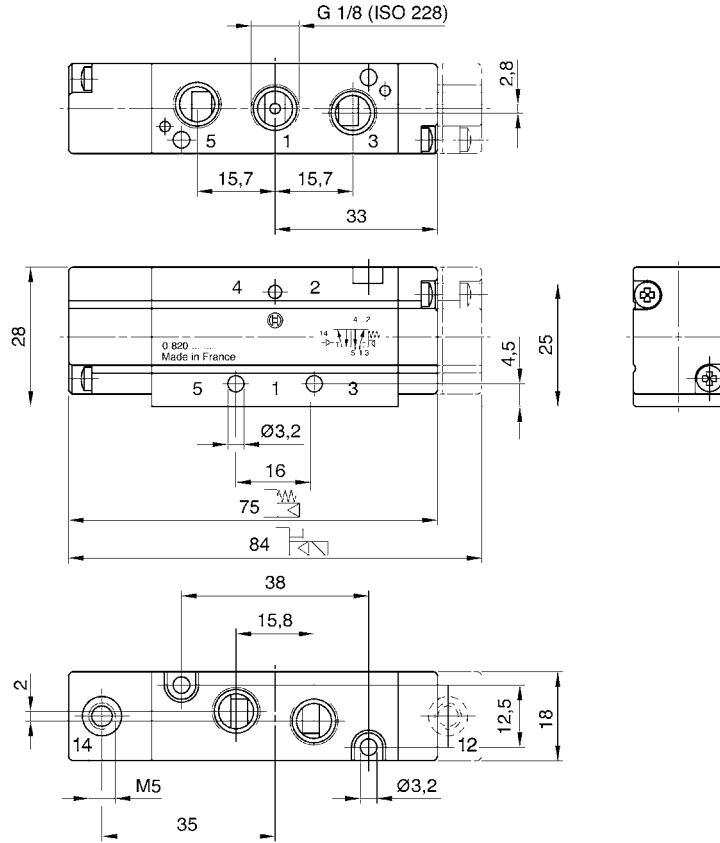
00108710

Pe = external control pressure, min.
p_B = Working pressure

5/2-directional valve, Series WV02

▶ Flow = 0.5 Cv ▶ pipe connection ▶ compressed air connection output: G 1/8

Dimensions



00108711