



DATA SHEET	52105600
SKINDICHT® SRE-M	valid from : 27.11.2015

The SKINDICHT® SRE-M is a special cable gland for screened cables. The earthing sleeve pushed under the braiding ensures a reliable functional earthing and EMC compliance. The neoprene sleeve guarantees sealing and kink protection, the cleat provides reliable strain relief.



Components:

Gland body	Brass, nickel-plated
Retainer with pressure screw	Brass, nickel-plated
Protective rubber sleeve	CR
Earthing sleeve	Brass, bright
O-ring	NBR

Technical features:

Connecting thread	M20x1,5 up to M40x1,5 acc. to EN 60 423
Functional thread	PG13,5 up to PG36 acc. to DIN 40430
Protection class	IP65 acc. to EN 60529
Temperature range	-20 °C up to +80 °C

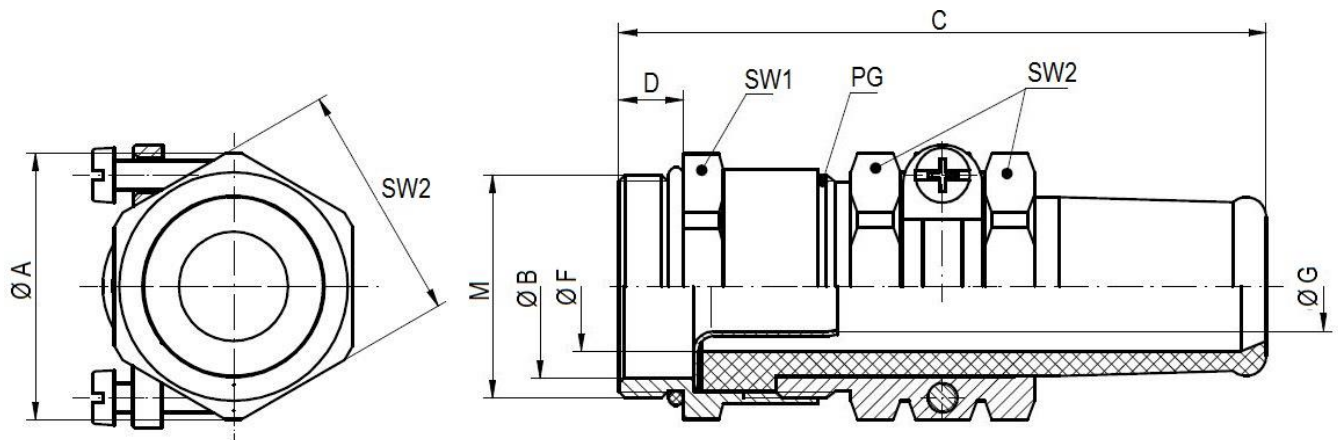
Norm references:



For more information please see our current catalogue.

elaborated by: PDP: V. Charcenko	Document: DB52105600EN	page 1 of 2
-------------------------------------	------------------------	-------------

DATA SHEET	52105600
SKINDICHT® SRE-M	valid from : 27.11.2015



M	PG	SW1 / SW2 [mm]	Ø A [mm]	Ø B [mm]	C [mm]	D [mm]	Ø G [mm]	Ø F [mm] Clamping range	Ø [mm] Cable inner sheath	Article No.
M20x1,5	PG13,5	22 / 22	25,1	15	59,5	6	6	7,5 - 9	4,5 - 6	52105600
M20x1,5	PG13,5	22 / 22	25,1	15	59,5	6	7	9 - 11	5,5 - 7	52105610
M20x1,5	PG16	24 / 24	27,4	15	64,5	6	9	11 - 13	7 - 9	52105620
M20x1,5	PG16	24 / 24	27,4	15	64,5	6	10	11 - 13	8 - 10	52105630
M20x1,5	PG16	24 / 24	27,4	15	64,5	6	11	13,5 - 15	9 - 11	52105640
M25x1,5	PG21	30 / 30	34,3	20	78	7	12	13,5 - 15	10 - 12	52105650
M25x1,5	PG21	30 / 30	34,3	20	78	7	14	15 - 17	12 - 14	52105660
M25x1,5	PG21	30 / 30	34,3	20	78	7	15	17 - 19	13 - 15	52105670
M25x1,5	PG21	30 / 30	34,3	20	78	7	16	18 - 20	14 - 16	52105680
M32x1,5	PG29	40 / 41	47,0	27	90	8	17	18 - 20	15 - 17	52105690
M32x1,5	PG29	40 / 41	47,0	27	90	8	19	21 - 23	17 - 19	52105700
M40x1,5	PG36	50 / 50	57,4	34	108	8	22	23,5 - 26	20 - 22	52105710
M40x1,5	PG36	50 / 50	57,4	34	108	8	24	27 - 30	22 - 24	52105720
M40x1,5	PG36	50 / 50	57,4	34	108	8	28	30 - 33	26 - 28	52105730
M40x1,5	PG36	50 / 50	57,4	34	108	8	30	32 - 35	28 - 30	52105740