

BEARING CASE MATERIAL

Glass-fibre reinforced polyamide based (PA) technopolymer, black colour, matte finish.

STANDARD EXECUTIONS

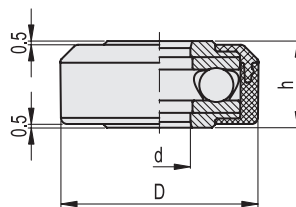
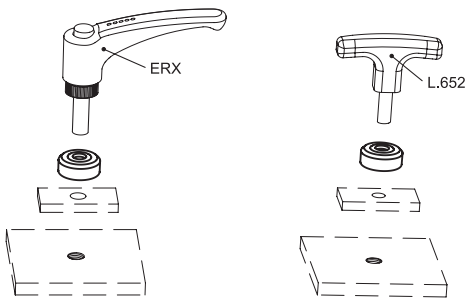
- **CMC**: AISI 52100 steel axial bearing, zinc-plated steel washers.
- **CMC-SST**: AISI 440 C stainless steel axial bearing, AISI 303 stainless steel washers.

FEATURES AND APPLICATIONS

Used in combination with clamping levers ERX. (see page 278), ERW. (see page 316), MRX. (see page 287), ERF. (see page 326), clamping knobs type VCT.SOFT (see page 189) or handles type L.652 (see page 526), CMC torque amplifier collars double the clamping force applied at equal torque due to the presence of a bearing acting to reduce friction.



ELESA Original design



CMC					
Code	Description	D	h	d	⚖️
32401	CMC.32-8	32	14	8	38
32402	CMC.32-10	32	14	10	37
32403	CMC.32-12	32	14	12	36

CMC-SST					
Code	Description	D	h	d	⚖️
32411	CMC.32-SST-8	32	14	8	38
32412	CMC.32-SST-10	32	14	10	37
32413	CMC.32-SST-12	32	14	12	36



Machine elements