

SUPPORT F. STAND-ALONE INSTALLATION FOR 3RU21/3RB30/3RB31 SZ. S3, MAIN CIRCUIT: SCREW TERMINAL






Figure similar



General technical data:		
product brandname		SIRIUS
Product designation		individual mount
Size of overload relay		S3
Ambient temperature		
• during storage	°C	-50 ... +80
• during operation	°C	-20 ... +70
Installation/ mounting/ dimensions:		
Mounting type		screw and snap-on mounting onto 35 mm standard mounting rail
Width	mm	70
Height	mm	120
Depth	mm	136
Connections/ Terminals:		
•		
— Type of connectable conductor cross-sections for main contacts finely stranded		

- with core end processing
- Type of connectable conductor cross-sections at AWG conductors
- for main contacts

	1x (2.5 ... 50 mm <sup>2</sup> )
	1x (10 ... 2/0)

#### Certificates/ approvals:

General Product Approval	Declaration of Conformity	Test Certificates	Shipping Approval
 CSA	 UL	 EAC	 EG-Konf.
		<a href="#">Type Test Certificates/Test Report</a>	 ABS

Shipping Approval	other
 PRS	 RINA
	<a href="#">Confirmation</a>

#### Further information

##### Information- and Downloadcenter (Catalogs, Brochures,...)

<http://www.siemens.com/industrial-controls/catalogs>

##### Industry Mall (Online ordering system)

<http://www.siemens.com/industrymall>

##### Cax online generator

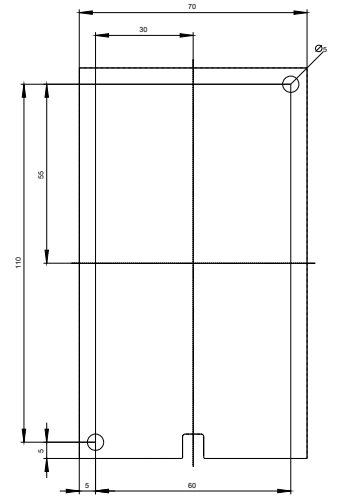
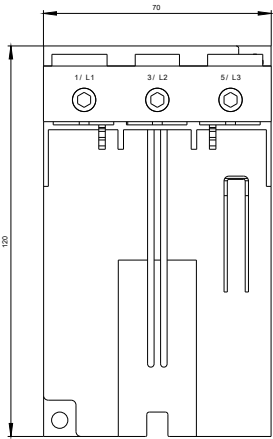
<http://support.automation.siemens.com/WW/CAXorder/default.aspx?lang=en&mlfb=3RU2946-3AA01>

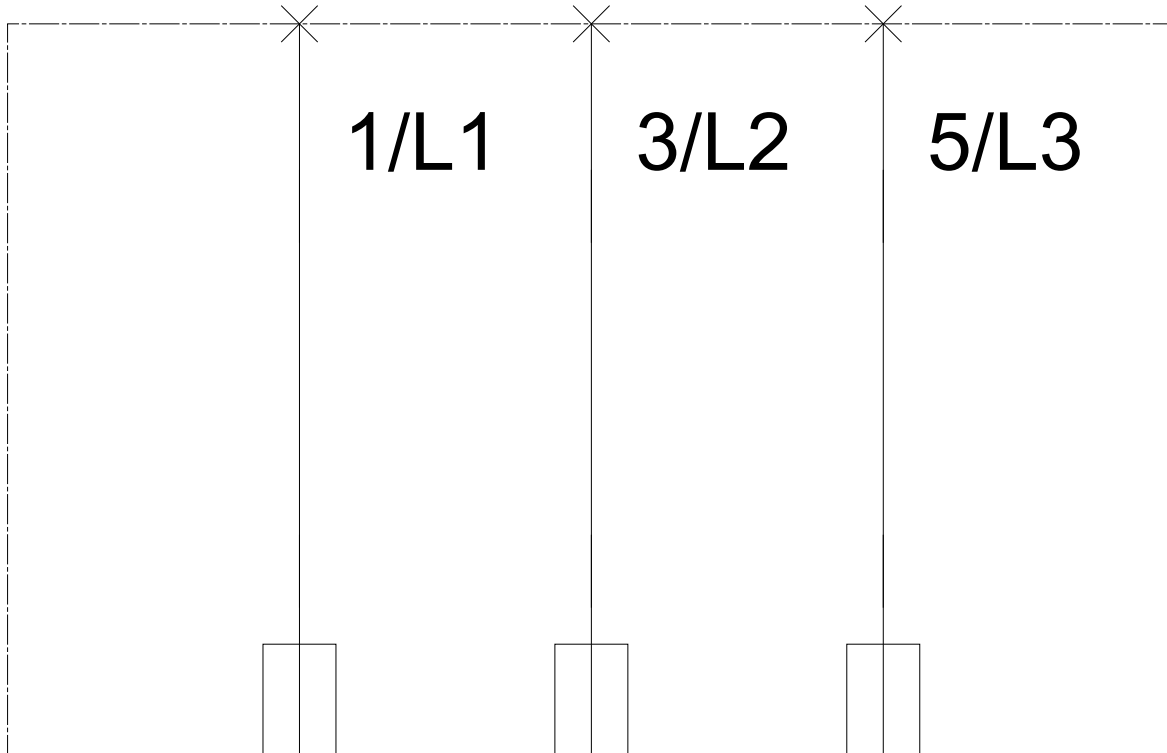
##### Service&Support (Manuals, Certificates, Characteristics, FAQs,...)

<https://support.industry.siemens.com/cs/ww/en/ps/3RU2946-3AA01>

##### Image database (product images, 2D dimension drawings, 3D models, device circuit diagrams, EPLAN macros, ...)

[http://www.automation.siemens.com/bilddb/cax\\_de.aspx?mlfb=3RU2946-3AA01&lang=en](http://www.automation.siemens.com/bilddb/cax_de.aspx?mlfb=3RU2946-3AA01&lang=en)





last modified:

08/11/2017