

## Tool clamp

Large base plate, for walls with 10 x 10 mm square holes

® RasterPlan

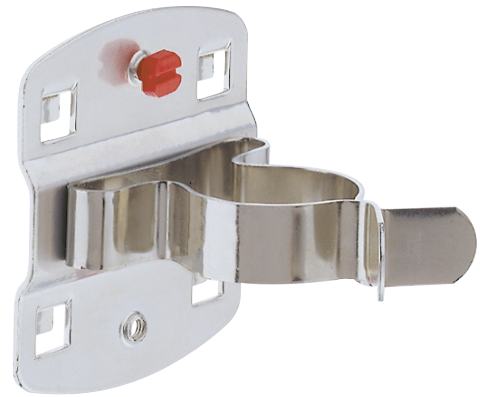
### Application:

Individual holder for tools and parts in perforated metal plate walls with 10 x 10 mm square holes, axis distance 38 mm.

### Delivery:

Screw included in scope of delivery

<b>Art. no.</b>	<b>50638 607</b>
<b>Suitable for perforated plates</b>	Yes
<b>Suitable for slotted plates</b>	No
<b>Diameter of retaining ring</b>	25 mm
<b>Number of carriers</b>	1 PCS
<b>Material</b>	Sheet steel
<b>Colour</b>	Aluminium coloured



### EAN-Code

4251142206041