



# Anybus Communicator Modbus TCP Client - PROFIBUS DP Device

The Anybus Communicator Modbus TCP Client to PROFIBUS enables you to connect Modbus TCP devices to PROFIBUS control systems. Anybus Communicators ensure reliable, secure, and high-speed data transfer between different industrial networks. Thanks to our intuitive web-based user interface, they're also incredibly easy to use.

## **High performance**

Powered by the award-winning NP40 network processor, it enables instant transfer of up to 1500 bytes (network dependent) between networks, totaling 3000 bytes.

## **Instant data transfer**

Instant data transfer lets you take advantage of high-speed industrial networks.

## **Endian conversion**

The Communicator provides hardware-accelerated endian conversion (byte swap), saving processing time on the PLC.

## **Intuitive user interface**

Use the intuitive web-based user interface to easily configure the Communicator via the drag-and-drop functionality or to analyze live data and generate support packages.

## **Cybersecurity**

Despite advanced security, human error often causes breaches. Our Communicator's physical security switch can lock configurations and block web interface access, enhancing security.

## **Optimized hardware design**

The Communicator has forward-facing ports and is designed for IP20 and DIN-rail mounting, enabling you to install it with ease, close to connected devices, thereby reducing wiring requirements.

## **Diagnostics**

The user interface displays real-time connection status and I/O data mapping for easy troubleshooting. Easily generate a support file containing all the necessary information.

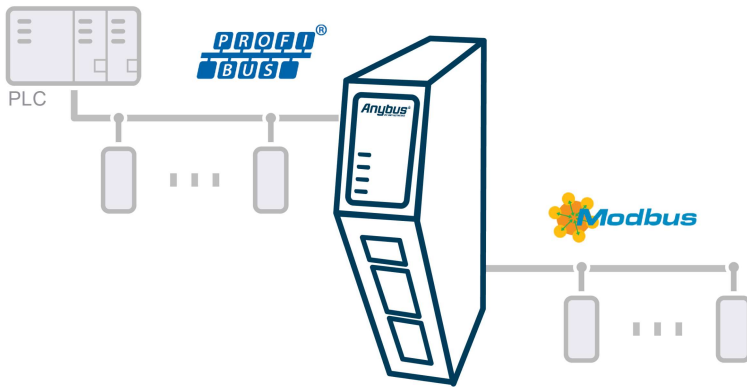
## **5-year warranty**

Thanks to carefully selected industrial components the Communicator operates reliably in harsh environments, ensuring uptime and longevity. Our confidence in quality is reflected in a 5-year warranty.

## **Life cycle management**

HMS maintains every part of the Communicator, including network updates, throughout the product's lifecycle.





### Modbus TCP Client Features

- Transfer up to 1 500 bytes to and from Modbus TCP Client (3000 bytes total)
- Connect up to 64 Modbus TCP Servers (slaves)
- 10 ms Modbus TCP Client cycle time
- Visual I/O configuration for data mapping (drag and drop)
- Transfer data cyclically or on data change
- Monitor and control Modbus TCP transactions from control system with Live list and Data exchange control
- Control how data transfer is initiated with network start-up options
- Handle control system (PLC) offline situations with freeze, pause and safe value options
- Ability to import Anybus legacy configuration file (from Anybus AB9xxx series gateways)
- Dual RJ45 Ethernet ports with 10/100 Mbit full duplex
- Daisy chaining with integrated switch

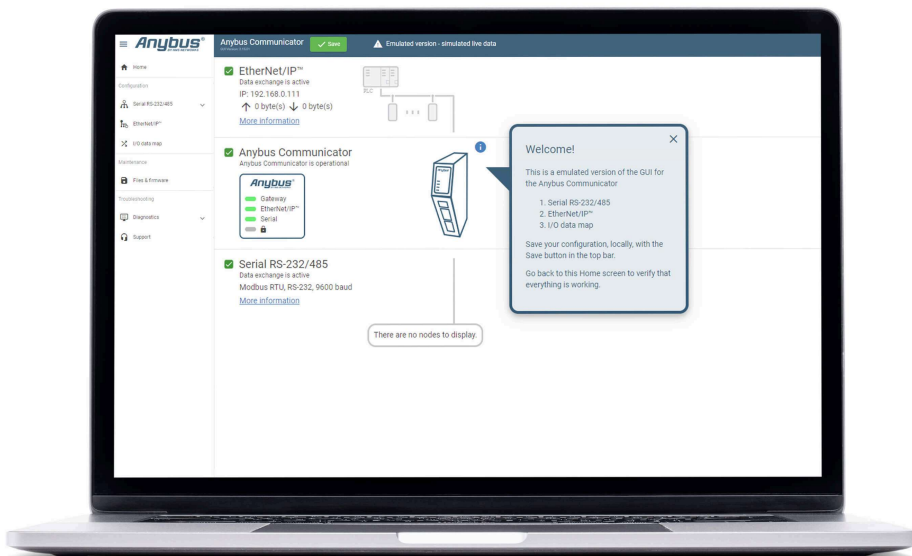
### PROFIBUS DP DEVICE FEATURES

- PROFIBUS DPV1 & DPV0 Device (slave)
- Transfer up to 244 bytes to and from PROFIBUS (488 bytes total)
- Automatic baud rate detection up to 12 Mbit/s
- PROFIBUS slave address setting via onboard rotary switches or web interface
- Supports Sync and Freeze and Watchdog
- Supports I&M 0-3
- 1x D-sub 9-pin female PROFIBUS connector
- GSD file available

### ANYBUS' SECOND-GENERATION GATEWAYS OFFER WORLD-LEADING USABILITY THANKS TO THE INTUITIVE GRAPHICAL USER INTERFACE (GUI).

The User Interface enables you to:

- Change the configurations without installing additional software
- Use drag and drop functionality to configure the gateway
- Import or export files or firmware
- Analyze live data or export a log file for deeper analysis
- Use the support tab to open the relevant user guide or generate a customized support package
- Want to brand your interface? No problem! Customize the interface to meet your look



## INTERESTED?

Click on the link to watch the User Interface in action. You can even try the user Interface before you buy!

→ [Learn more](#)

## GENERAL

<b>Dimensions (L x W x H) with serial and power connector</b>	98 x 27 x 144 mm 3.85 x 1.06 x 5,67 in
<b>Weight</b>	150 grams, 0.33 lb
<b>Buttons and switches</b>	Reset button and security switch
<b>LEDs</b>	Gateway, Network 1 & Network 2
<b>IP rating</b>	IP20
<b>Housing material</b>	PC ABS, UL 94 VO
<b>Mounting</b>	DIN rail (35 * 7,5/15)

## ENVIRONMENT

<b>Operating temperature</b>	-25 to 70° C, -13 to 158° F
<b>Storage temperature</b>	-40 to 85° C, -40 to 185° F
<b>Relative humidity</b>	0-95% non condensing
<b>Installation altitude</b>	Up to 2 000 m

## POWER

<b>Input voltage</b>	12 - 30 VDC
<b>Current consumption</b>	Typical: 90 mA @ 24V (2.2 W)
<b>Power connector</b>	3-pin plug with screw terminal

<b>Protection</b>	Reverse voltage protection and short circuit protection
-------------------	---

#### ETHERNET PORTS

<b>Ports</b>	2 x Ethernet ports per Ethernet protocol
<b>Isolation</b>	Galvanic isolation
<b>Bitrate</b>	10/100 Mbit full duplex
<b>Connector</b>	RJ45
<b>Switch.</b>	Dual port cut-through switch

#### MODBUS TCP CLIENT

Mode	Modbus TCP Client (Master)
Input data size	1500 bytes
Output data size	1500 bytes
Functions supported	Read Coils, Read Discrete Inputs, Read Holding Registers, Read Input Registers, Write Single Coil, Write Single Register, Write Multiple Coils, Write Multiple Registers, Read/Write Multiple Registers
Max numbers of transactions	152
Minimum cycle time	10 ms
Max number of connections	64
Network start-up modes	Directly, Wait for data
Offline options	Freeze, pause or safe value
Live list	Monitor up to 152 transactions from control system (PLC)
Data exchange control	Control up to 152 transactions from control system (PLC)

#### PROFIBUS

<b>Mode</b>	PROFIBUS DPV1 Device (slave)
<b>Input data size</b>	244 bytes
<b>Output data size</b>	244 bytes
<b>Baude rate</b>	Automatic baud rate detection up to 12 Mbit/s
<b>Rotary switches</b>	PROFIBUS slave address setting via onboard rotary switches or web interface
<b>Features</b>	Supports Sync and Freeze and Watchdog
<b>I&amp;M records</b>	Manufacturer data (I&M0), Tag information (I&M1), Date/Time (I&M2), Description (I&M3)
<b>Connector</b>	1x D-sub 9-pin female PROFIBUS connector

<b>GSD</b>	GSD file available
------------	--------------------

#### CERTIFICATIONS AND STANDARDS

<b>UL</b>	cULus file number E214107
<b>CE</b>	2014/30/EU
<b>KC</b>	R-R-ABJ-Communicator (Pending for EtherCAT MainDevice)
<b>EMC</b>	EN 61000-6-2 EN 61000-4-2 EN 61000-4-3 EN 61000-4-4 EN 61000-4-5 EN 61000-4-6 EN 61000-6-4 EN 55032
<b>Environment</b>	IEC 60068-2-1 Ab IEC 60068-2-2 Bb IEC 60068-2-1 Ab IEC 60068-2-2 Bb IEC 60068-2-14 Nb IEC 60068-2-30 Db IEC 60068-2-78 Cab IEC 60068-2-78 Cab
<b>Vibration and shock</b>	IEC 60068-2-27 IEC 60068-2-6
<b>Waste certification</b>	WEE

#### CONFIGURATION

<b>Configuration software</b>	Web based configuration
<b>Configuration ports</b>	Dedicated 10/100 Mbit RJ45 Ethernet configuration port and Ethernet ports

#### SECURITY

<b>Secure boot</b>	Ensures software authenticity
<b>Security switch</b>	Physical switch that enable/disable access to the web based configuration interface

#### PRODUCT PACKAGING

<b>Content</b>	Gateway, power connector, start-up guide, compliance information sheet
<b>Box material</b>	Cardboard

#### MEAN TIME BETWEEN FAILURE



<b>MTBF</b>	> 1 500 000 h, Telcordia Method I Case 3 at 30° C
-------------	---

---

File	Version	Size	Read online
------	---------	------	-------------

---

## Ordering Information

**ORDER CODE: ABC3200**

**WARRANTY:** 5 years

For purchasing instructions and terms and conditions, see: [How to buy](#).

---

Copyright © 2020 HMS Industrial Networks - All rights reserved.

