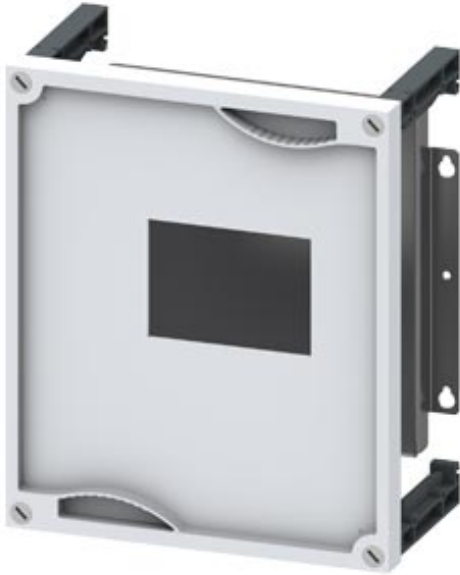




Mounting Kit MCCB 3VA 1 x 3VA12 up to 250A with Front mounted rotary operator vertical mounting h=300, w=250



Model	
Product brand name	ALPHA
Product designation	Assembly kit for 3VA1 molded-case circuit breakers
Cover plate version	with cutout
Product component	
<ul style="list-style-type: none"> • Grounding bus 	No
<ul style="list-style-type: none"> • Plastic cover plate 	Yes
<ul style="list-style-type: none"> • Mounting plate 	Yes
Mechanical Design	
Height	300 mm
Width	500 mm
Mounting position	Vertical installation
Equipment marking	
<ul style="list-style-type: none"> • acc. to DIN EN 61346-2 	Q
<ul style="list-style-type: none"> • acc. to DIN EN 81346-2 	QA

General Product Approval	Declaration of Conformity	Test Certificates	other
 <p>VDE</p>	 <p>EG-Konf.</p>	Special Test Certificate	Miscellaneous

Further information

Information- and Downloadcenter (Catalogs, Brochures,...)

<http://www.siemens.com/lowvoltage/catalogs>

Industry Mall (Online ordering system)

<https://mall.industry.siemens.com/mall/en/en/Catalog/product?mlfb=8GK4735-2KK12>

Service&Support (Manuals, Certificates, Characteristics, FAQs,...)

<https://support.industry.siemens.com/cs/ww/en/ps/8GK4735-2KK12>

Image database (product images, 2D dimension drawings, 3D models, device circuit diagrams, ...)

http://www.automation.siemens.com/bilddb/cax_en.aspx?mlfb=8GK4735-2KK12

CAX-Online-Generator

<http://www.siemens.com/cax>

Tender specifications

<http://www.siemens.com/specifications>

